

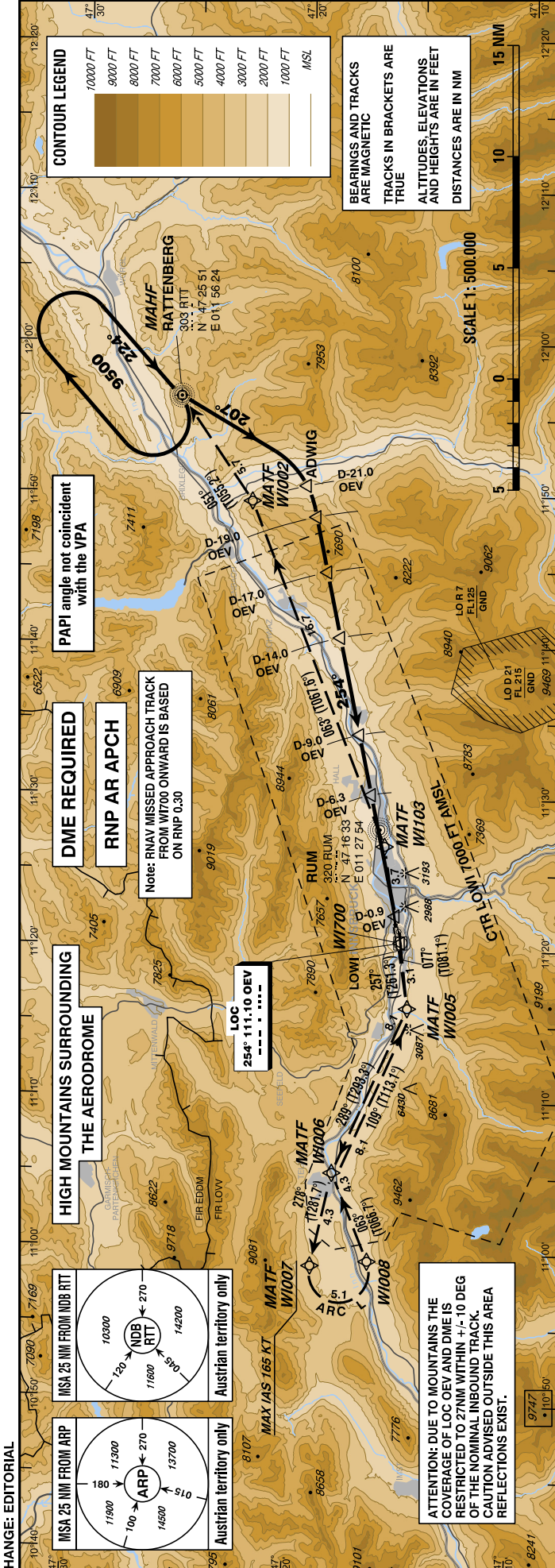
INSTRUMENT APPROACH CHART - ICAO

VAR 4° E

AD ELEV 1907 FT
THR 26 ELEV 1894 FT
HGT RELATED TO THR ELEV

RADAR 128.975
TOWER 120.100
ATIS 126.030

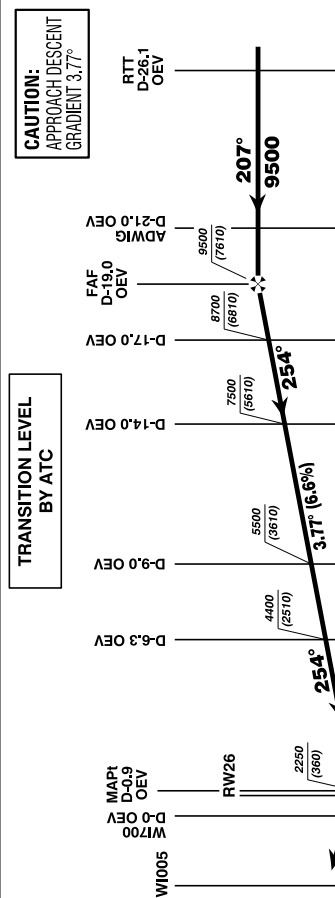
(LOC RWY 26 followed by RNAV RNP 0.3 Missed Approach)
(CAT A / B / C)



WAYPOINT LIST (WGS84):

RTT	N472551.32	E0115624.19
W1002	N472236.01	E0114930.01
W1005	N471508.72	E0111606.82
W1006	N471820.40	E0110509.80
W1007	N471912.18	E0105859.94
W1008	N471638.56	E0105921.62
W1009	N471753.02	E0105834.83
(= ARC center point)		
W1010	N471616.49	E0112647.56
W1013	N471530.91	E0112026.63
W1017	N471530.91	E0112026.63
RW26	N471541.83	E0112125.26
ARP	N471537.00	E0112038.00

MISSED APPROACH:
Climb VIA RNAV MISSED APPROACH-TRACK TO RTT;
CLIMB TO 11500 FT AMSL AND HOLD.



TRANSITION LEVEL BY ATC

Transition Level	Altitude (FT)
RTT D-26.1 OEV	9500
ADWIG D-21.0 OEV	9500
FAF D-19.0 OEV	8700
D-17.0 OEV	8700
D-14.0 OEV	7500
D-9.0 OEV	5500
D-6.3 OEV	4400
MAP1 D-0.9 OEV	2250
RW26	2250

D-19.0 OEV to D-0.9 OEV - DISTANCE 18.1 NM

GS (KT)	80	100	120	140	160	180
MIN : SEC	13:35	10:52	9:03	7:45	6:47	6:02

AERA OF VISUAL MANOEUVRING SEE LOWI AD 2 MAP 14-1

DME OEV	18	17	16	15	14	13	12	11	10	9	8	7	6	5	4	3	2
DIST THR	17.8	16.8	15.8	14.8	13.8	12.8	11.8	10.8	9.8	8.8	7.8	6.8	5.8	4.8	3.8	2.8	1.8
ALT (HEIGHT)	9100 (6806)	8700 (6406)	8300 (6006)	7900 (5606)	7500 (5206)	7100 (4806)	6700 (4406)	6300 (4006)	5900 (3606)	5500 (3206)	5100 (2806)	4700 (2406)	4300 (2006)	3900 (1606)	3500 (1206)	3100 (806)	2700 (406)

MA CLIMB GRADIENT until passing 3200 FT, thereafter 2.5%

MA CLIMB GRADIENT	A	B	C
5.0%	2250 (360)	D-0.9 OEV	
4.0%	2450 (560)	D-0.9 OEV	
2.5%	2750 (860)	D-0.9 OEV	

SPECIAL AUTHORIZATION REQUIRED

This procedure is permissible for special equipped aircraft and requires authorization by Austro Control GmbH for detailed information see LOWI AD 2.22, item 3.6.

The chart may only be used in connection with the description of the procedure !

CHANGE: EDITORIAL