

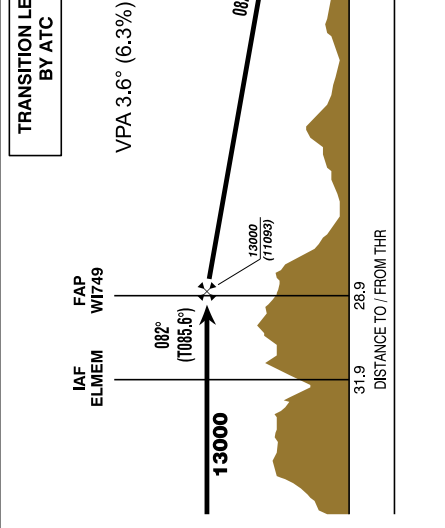
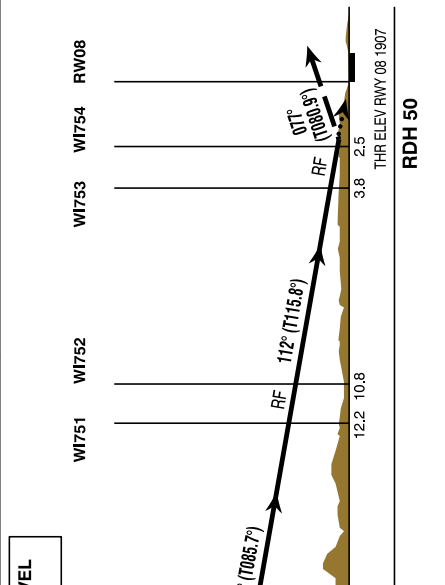
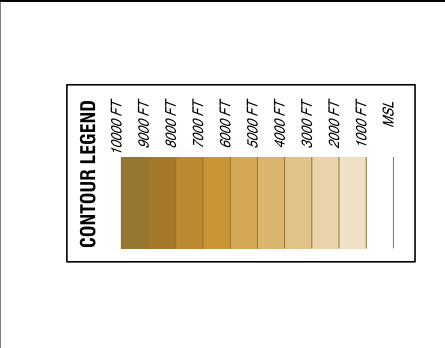
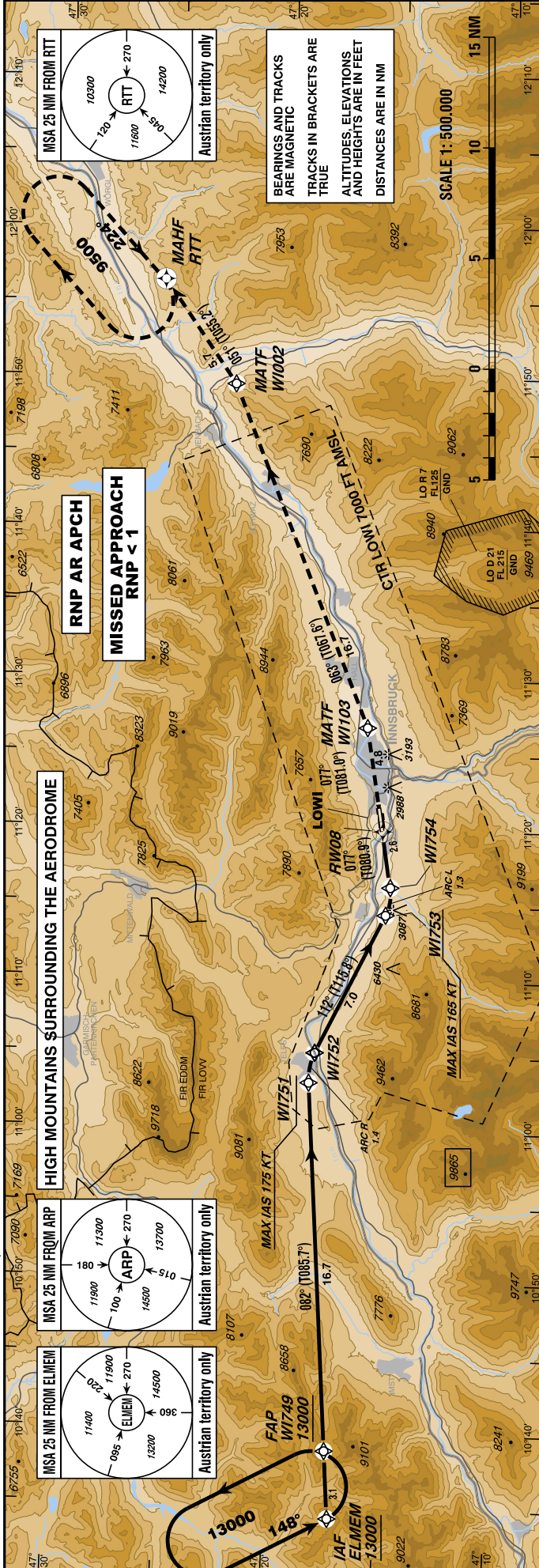
INSTRUMENT APPROACH CHART - ICAO

VAR 4° E

AD ELEV 907
THR 08 ELEV 1907
HGT RELATED TO THR ELEV

RADAR 128.975
TOWER 120.100
ATIS 126.030

INNSBRUCK (LOWI)
ÖSTERREICH AUSTRIA
RNP Z RWY 08 (AR)
CAT A / B / C



SPECIAL AUTHORIZATION REQUIRED

This procedure is permissible for special equipped aircraft and requires authorization by Austro Control GmbH (for detailed information see LOWI AD 2.22, item 3.8.)

MISSED APPROACH:
CLIMB VIA RNAV MISSED APPROACH TRACK TO RTT;
CLIMB TO 9500 FT AMSL AND HOLD.

Note: Missed Approach Procedure is based on RNP 0.3

GS (KT)	80	100	120	140	160	180
FT / MIN	510	630	760	890	1010	1140

- Dual GNSS and at least one IRU or equivalent
- DMEDME, LOC and VOR/DME updating not authorized
- For uncompensated Baro-VNAV systems, procedure not authorized below AD temp -7°C
- VPA exceeds 3.6° above +11°C
- PAPI angle not coincident with the VPA

DA (DH) IN FT	A	B	C
RNP 0.3		2900 (1000)	

Instrument Approach Procedure Coding Table Innsbruck RNP Z RWY 08 (AR)										
Path Terminator	Waypoint				Course/Track ° MAG (° True)	DIST NM	Turn Direction	ARC Centre Waypoint		ARC Radius NM
	Identifier	Type	Flyover	Coordinates				Identifier	Coordinates	
IF	ELMEM	IAF	no	N471708.28 E0103414.66						
TF	WI749	FAP	no	N471722.16 E0103842.94	082° (085.6°)	3.1				
TF	WI751		no	N471834.91 E0110309.49	082° (085.7°)	16.7				
RF	WI752		no	N471821.18 E0110508.91		1.4	right	WI755	N471540.17 E0110327.53	2.9
TF	WI753		no	N471518.89 E0111422.66	112° (115.8°)	7.0				
RF	WI754		no	N471507.99 E0111612.91		1.3	left	WI756	N471713.57 E0111543.43	2.1
TF	RW08		yes	N471531.97 E0111954.11	077° (080.9°)	2.5				
TF	WI103	MATF	no	N471616.49 E0112647.56	077° (081.0°)	4.8				
TF	WI002	MATF	no	N472236.01 E0114930.01	063° (067.6°)	16.7	left			
TF	RTT	MAHF	yes	N472551.32 E0115624.19	051° (055.2°)	5.7	left			
Waypoint	Constraints		RNP Value NM	Navigation Specification	Remarks					
Identifier	Level	Speed								
ELMEM	A13000+		1.0	RNP AR APCH						
WI749	A13000+		0.3	RNP AR APCH						
WI751		K175-	0.3	RNP AR APCH						
WI752		K175-	0.3	RNP AR APCH						
WI753		K165-	0.3	RNP AR APCH						
WI754		K165-	0.3	RNP AR APCH						
RW08			0.3	RNP AR APCH						
WI103			0.3	RNP AR APCH						
WI002			0.3	RNP AR APCH						
RTT	A9500+		0.3	RNP AR APCH						
RNAV Holding										
Holding Point	Inbound Track ° True	Inbound Track ° MAG	Turn Direction	MAX IAS	Minimum Holding Altitude FT MSL / FL	Time	DIST NM	Remarks		
ELMEM	151.6°	148°	left		A13000	1 MIN				
RTT	228.7°	224°	right		A9500	1 MIN				