

**INSTRUMENT APPROACH CHART - ICAO**

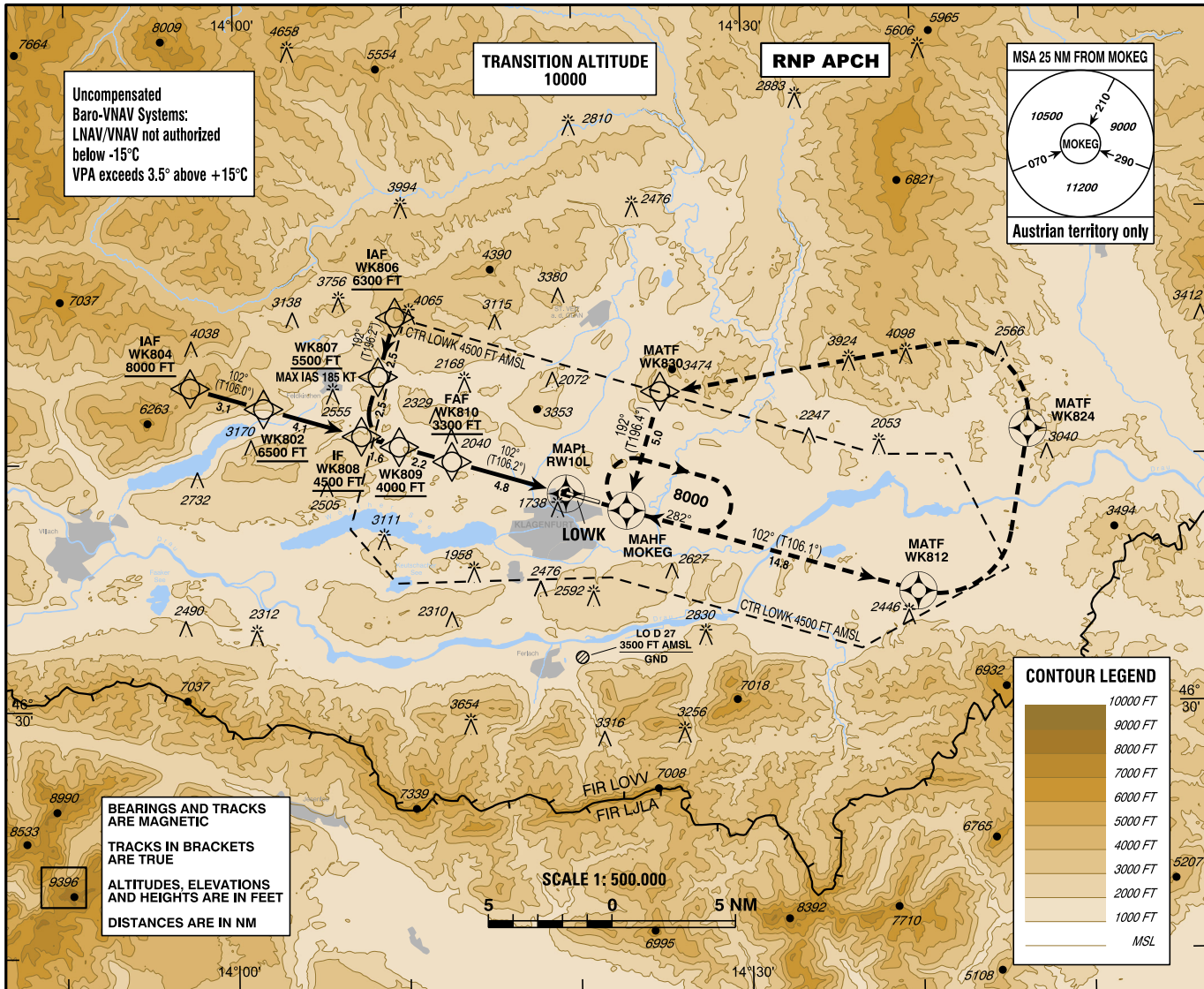
VAR 4° E

AD ELEV 1472 FT  
THR 10L ELEV 1470 FT  
HGT RELATED TO THR ELEV

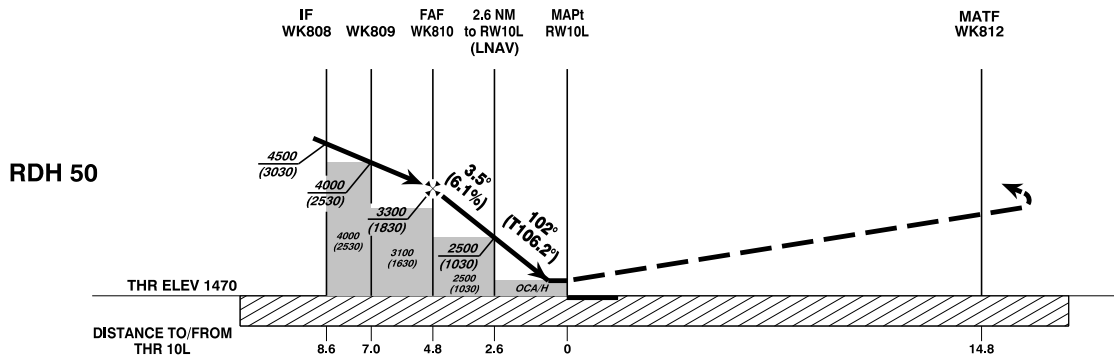
RADAR 123.325  
TOWER 118.100  
ATIS 126.330

EGNOS  
CH 95190  
E10A

**KLAGENFURT (LOWK)**  
ÖSTERREICH AUSTRIA  
RNP RWY 10L



CHANGE: EDITORIAL



**MISSED APPROACH:** CLIMB STRAIGHT AHEAD TO WK812, THEN TURN LEFT DIRECT TO WK824, THEN TURN LEFT DIRECT TO WK830, THEN TURN LEFT TO MOKEG AND HOLD; DO NOT ENTER THE HOLDING BELOW 8000 FT AMSL.  
NOTE: MISSED APPROACH TURN LIMITED TO MAX IAS 230 KT.

OCA (OCH) IN FT	A	B	C	D
LNAV	2230 (760)			
LNAV/VNAV	2188 (718)	2220 (750)		
LPV	1685 (215)	1701 (231)	1712 (242)	1723 (253)

DIST in NM to RW10L	4	3	2
ALTITUDE (HEIGHT)	3010 (1540)	2630 (1160)	2260 (790)

WK810 to RW10L - DISTANCE 4.8 NM (Timing not authorized for defining the MAPt)							
	GS (KT)	80	100	120	140	160	180
WK810 - RW10L	MIN : SEC	3:36	2:53	2:24	2:03	1:48	1:36
Rate of descent (6.1%)	FT / MIN	490	620	740	860	990	1110

Instrument Approach Procedure Coding Table Klagenfurt RNP RWY 10L via WK806											
Path Terminator	Waypoint				Course/ Track ° MAG (° True)	DIST NM	Turn Direction	Constraints		Navigation Specification	Remarks
	Identifier	Type	Flyover	Coordinates				Level	Speed		
IF	WK806	IAF	no	N464555.48 E0140926.00				A6300+		RNP APCH	
TF	WK807		no	N464331.37 E0140825.30	192° (196.2°)	2.5		A5500+	K185-	RNP APCH	
TF	WK808	IF	no	N464107.36 E0140724.72	192° (196.1°)	2.5		A4500+		RNP APCH	
TF	WK809		no	N464040.94 E0140937.39	102° (106.1°)	1.6	left	A4000+		RNP APCH	
TF	WK810	FAF	no	N464003.92 E0141242.83	102° (106.2°)	2.2		A3300+		RNP APCH	
TF	RW10L	MAPt	yes	N463843.58 E0141923.54	102° (106.2°)	4.8				RNP APCH	
TF	WK812	MATF	yes	N463436.18 E0144000.39	102° (106.1°)	14.8				RNP APCH	
DF	WK824	MATF	yes	N464105.85 E0144634.65			left			RNP APCH	
DF	WK830	MATF	no	N464248.45 E0142459.21			left			RNP APCH	
TF	MOKEG	MAHF	yes	N463800.64 E0142256.50	192° (196.4°)	5.0	left	A8000+	K230-	RNP APCH	
HM	MOKEG	MAHF	yes	N463800.64 E0142256.50	282° (286.2°)		right	A8000+	K230-	RNP APCH	
<b>RNAV Holding</b>											
Holding Point	Inbound Track ° True	Inbound Track ° MAG	Turn Direction	MAX IAS	Minimum Holding Altitude FT MSL / FL	Time	DIST NM	Remarks			
MOKEG	286.2°	282°	right	K230-	A8000	1 MIN					

**Instrument Approach Procedure Coding Table  
Klagenfurt RNP RWY 10L via WK804**

Path Terminator	Waypoint				Course/ Track ° MAG (° True)	DIST NM	Turn Direction	Constraints		Navigation Specification	Remarks
	Identifier	Type	Flyover	Coordinates				Level	Speed		
IF	WK804	IAF	no	N464306.83 E0135721.35				A8000+		RNP APCH	
TF	WK802		no	N464215.74 E0140140.08	102° (106.0°)	3.1		A6500+		RNP APCH	
TF	WK808	IF	no	N464107.36 E0140724.72	102° (106.1°)	4.1		A4500+		RNP APCH	
TF	WK809		no	N464040.94 E0140937.39	102° (106.1°)	1.6		A4000+		RNP APCH	
TF	WK810	FAF	no	N464003.92 E0141242.83	102° (106.2°)	2.2		A3300+		RNP APCH	
TF	RW10L	MAPt	yes	N463843.58 E0141923.54	102° (106.2°)	4.8				RNP APCH	
TF	WK812	MATF	yes	N463436.18 E0144000.39	102° (106.1°)	14.8				RNP APCH	
DF	WK824	MATF	yes	N464105.85 E0144634.65			left			RNP APCH	
DF	WK830	MATF	no	N464248.45 E0142459.21			left			RNP APCH	
TF	MOKEG	MAHF	yes	N463800.64 E0142256.50	192° (196.4°)	5.0	left	A8000+	K230-	RNP APCH	
HM	MOKEG	MAHF	yes	N463800.64 E0142256.50	282° (286.2°)		right	A8000+	K230-	RNP APCH	
<b>RNAV Holding</b>											
Holding Point	Inbound Track ° True	Inbound Track ° MAG	Turn Direction	MAX IAS	Minimum Holding Altitude FT MSL / FL	Time	DIST NM	Remarks			
MOKEG	286.2°	282°	right	K230-	A8000	1 MIN					

<b>SBAS FAS Data Block Coding Table Klagenfurt RNP RWY 10L</b>	
<b>Input data</b>	
Operation Type	0
SBAS Provider	1 (EGNOS)
Airport Identifier	LOWK
Runway	10
Runway Letter	3 (Left)
Approach Performance Designator	0
Route Indicator	
Reference Path Data Selector	0
Reference Path Identifier	E10A
LTP/FTP Latitude	463843.5800N
LTP/FTP Longitude	0141923.5400E
LTP/FTP Ellipsoidal Height (metres)	496.0
FPAP Latitude	463820.7010N
Delta FPAP Latitude (seconds)	-22.8790
FPAP Longitude	0142117.2405E
Delta FPAP Longitude (seconds)	113.7005
Threshold Crossing Height	50.0
TCH Units Selector	0 (feet)
Glidepath Angle (degrees)	3.50
Course Width (metres)	105.00
Length Offset (metres)	0
HAL (metres)	40.0
VAL (metres)	35.0
<b>Output data</b>	
Data Block	10 0B 17 0F 0C CA 00 00 01 30 31 05 F8 9E 04 14 28 98 25 06 60 27 42 4D FF 49 78 03 F4 01 5E 01 64 00 C8 AF 1A CB 62 A1
Calculated CRC Value	1ACB62A1
<b>Required Additional data</b>	
ICAO Code	LO
LTP/FTP Orthometric Height (metres)	448.0