

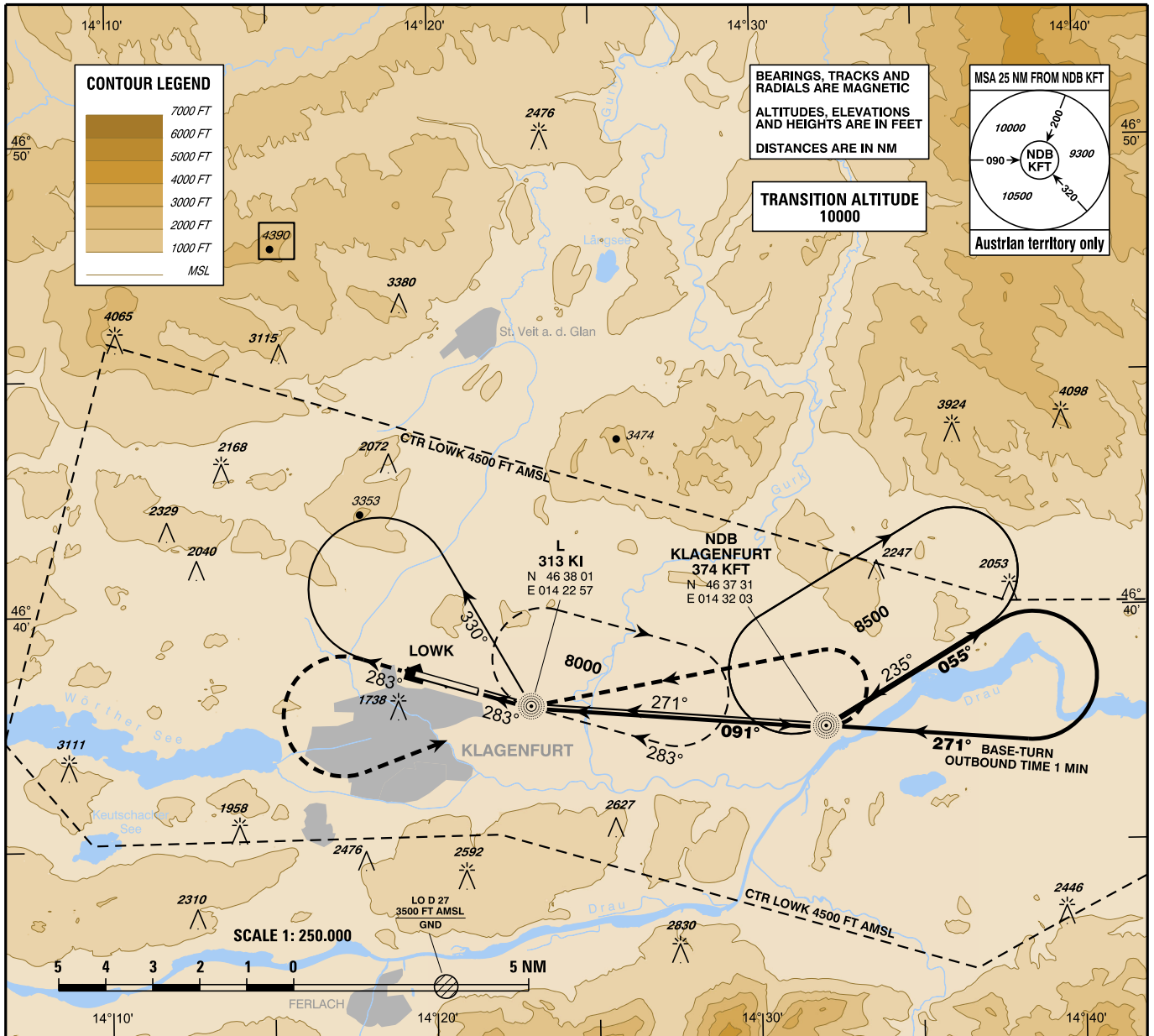
**INSTRUMENT
APPROACH
CHART - ICAO**

VAR 4° E

AD ELEV 1472 FT
THR 28R ELEV 1444 FT
HGT RELATED TO THR ELEV

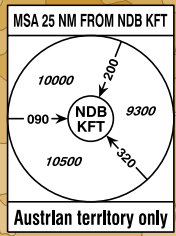
RADAR 123.325
TOWER 118.100
ATIS 126.330

KLAGENFURT (LOWK)
ÖSTERREICH AUSTRIA
NDB RWY 28R



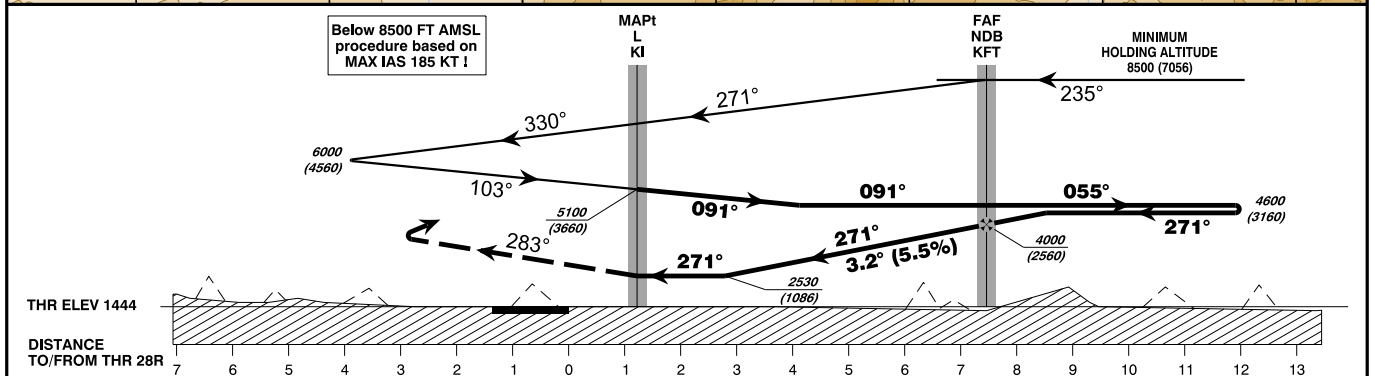
BEARINGS, TRACKS AND RADIALS ARE MAGNETIC
ALTITUDES, ELEVATIONS AND HEIGHTS ARE IN FEET
DISTANCES ARE IN NM

TRANSITION ALTITUDE
10000



Austrian territory only

CHANGE: EDITORIAL



NOTE 1: ACCELERATE AFTER COMPLETION OF THE MA-TURN AND HOMING L KI !
NOTE 2: MISSED APPROACH TURN LIMITED TO MAX IAS 185 KT !

OCA (OCH) IN FT	A	B	C	D
STRAIGHT-IN APPROACH NOTE: FINAL APPROACH TRACK BETWEEN NDB KFT AND L KI NOT ALIGNED WITH RUNWAY CENTRE LINE	2530 (1086)			
CIRCLING PROCEDURE SEE LOWK AD 2 MAP 14-1				

NDB KFT TO L KI - DISTANCE 6.3 NM L KI TO THR 28R - DISTANCE 1.2 NM (Timing not authorized for defining the MAPt)							
GS (KT)	80	100	120	140	160	180	
NDB KFT - L KI	MIN : SEC	4:44	3:47	3:09	2:42	2:22	2:06
L KI - THR 28R	MIN : SEC	0:54	0:43	0:36	0:31	0:27	0:21