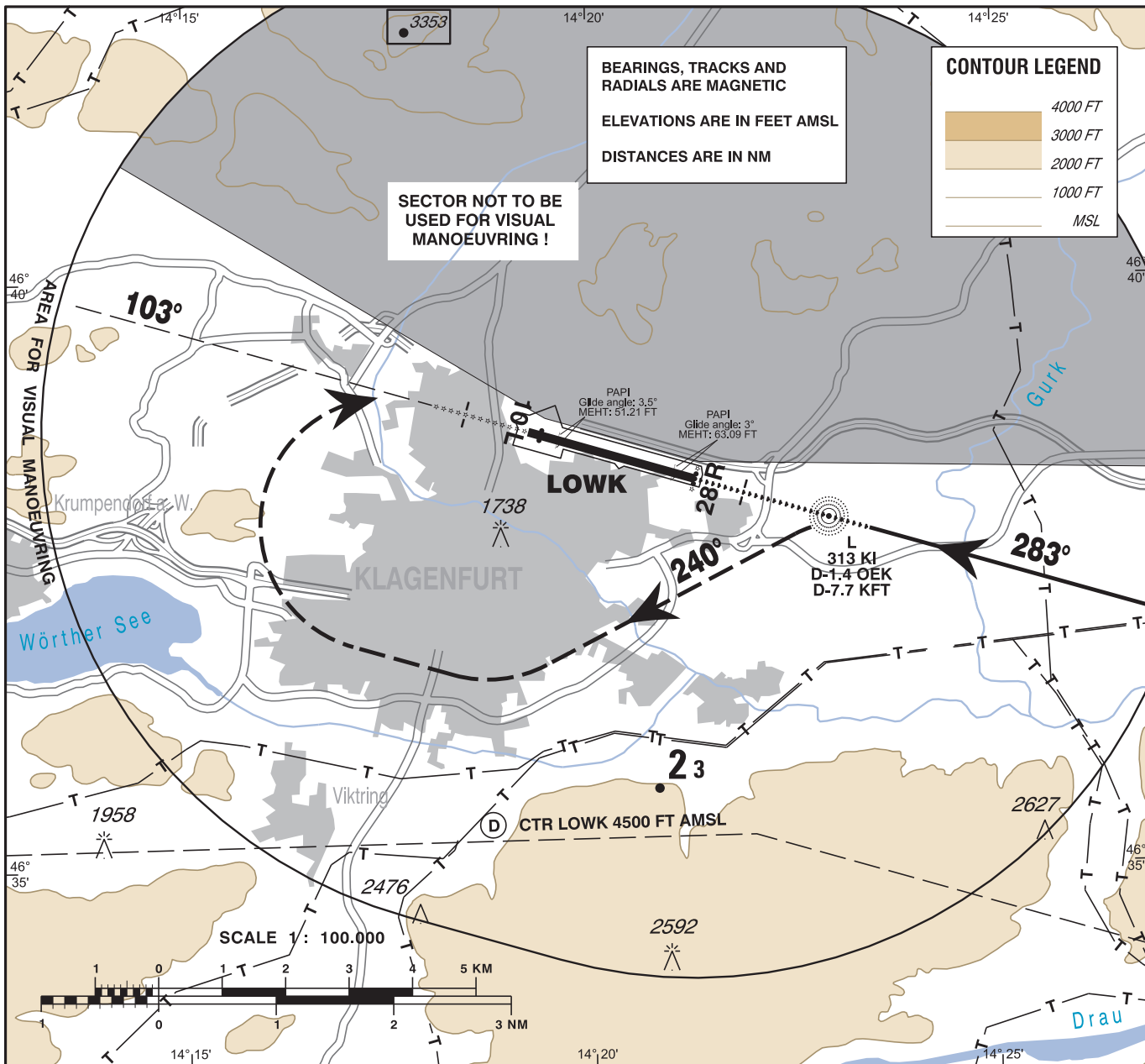


RADAR 123.325
 TOWER 118.100
 ATIS 126.330

KLAGENFURT
 ÖSTERREICH AUSTRIA

CIRCLING RWY 10L VAR 4° E AD ELEV 1472 FT



CHANGE: EDITORIAL

CIRCLING PROCEDURE RWY 10L:

Complete a published Instrument Approach to RWY 28R;
 Break-off to the left not later than over L KI and execute a circling approach to RWY 10L, observing the area for visual manoeuvring as indicated above.
 If visual reference is lost during the circling manoeuvre, climb to the minimum circling altitude or higher and turn right to L KI. Do not overshoot QDM 103 L KI; After L KI follow MA-Procedure as described for ILS or NDB approach.

- For obstructions see:
 - Aerodrome Obstacle Chart - ICAO Type A (LOWK AD 2 MAP 4-1) and
 - Aerodrome Obstacle Chart - ICAO Type B (LOWK AD 2 MAP 5-1)

OCA CIRCLING	A	B	C	D
FT AMSL	2150	2720	3290	3290
VISUAL MANOEUVRING RESTRICTED TO MAX IAS 180 KT !				