

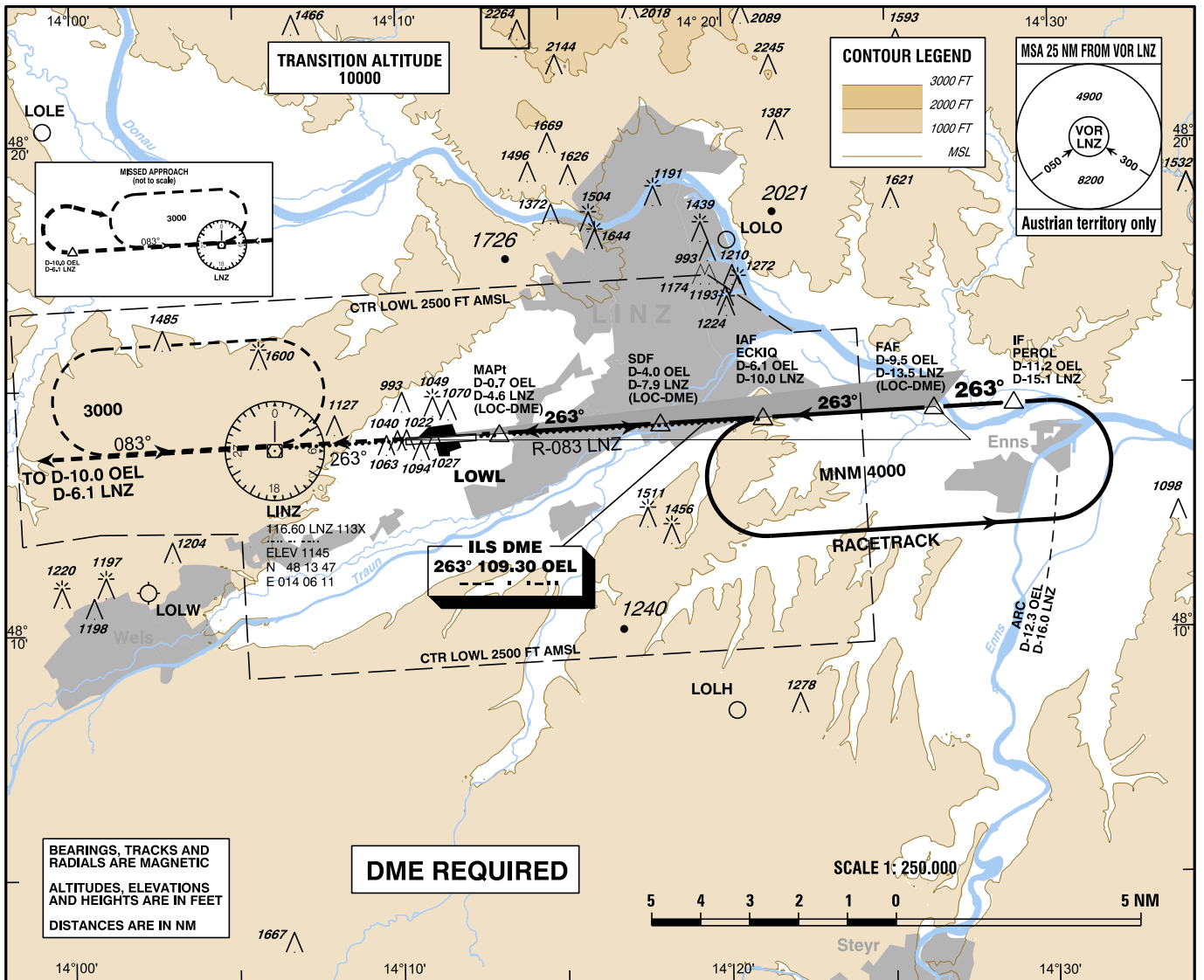
**INSTRUMENT APPROACH CHART - ICAO**

VAR 4° E

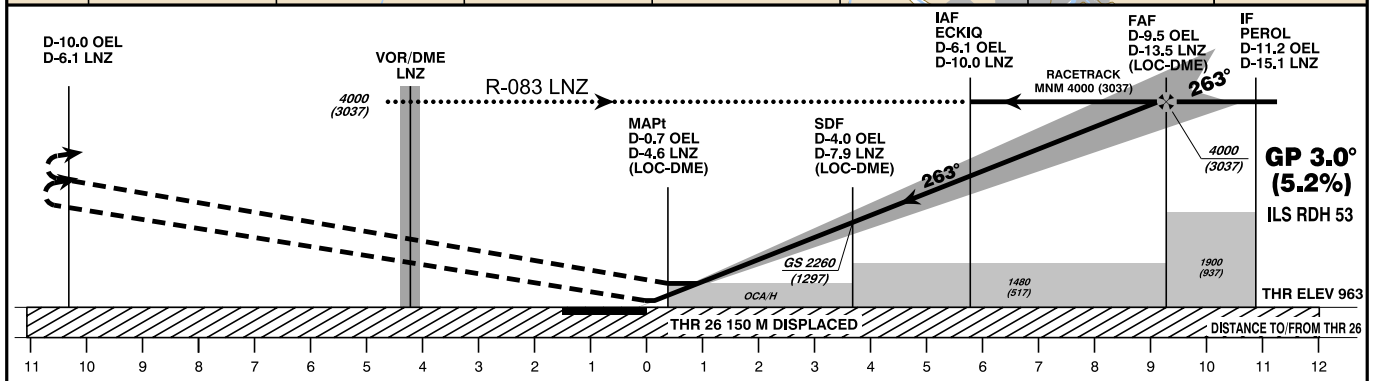
AD ELEV 980 FT  
 THR 26 ELEV 963 FT  
 HGT RELATED TO THR ELEV  
 CIRCLING HGT RELATED TO AD ELEV

RADAR 125.685  
 129.625  
 TOWER 118.800  
 ATIS 128.130

**L I N Z (LOWL)**  
 ÖSTERREICH AUSTRIA  
 ILS CAT II & III or LOC RWY 26



CHANGE: OCA (OCH): EDITORIAL



**MISSED APPROACH: CLIMB STRAIGHT AHEAD, AT D-10.0 OEL (D-6.1 LNZ) TURN RIGHT TO VOR/DME LNZ; CLIMB TO 3000 FT AMSL AND HOLD.**

OCA (OCH) IN FT					D-9.5 OEL to THR 26 - DISTANCE 9.4 NM (Timing not authorized for defining the MAPt)								
	A	B	C	D / D <sub>L</sub>		GS (KT)	80	100	120	140	160	180	
STRAIGHT-IN APPROACH	CAT I Press. Altim.	1115 (152)	1128 (165)	1136 (173)	1146 (183)	D-9.5 OEL - THR 26	MIN : SEC	7:02	5:37	4:41	4:01	3:31	3:07
	CAT II RDO Altim.	1027 (64)	1045 (82)	1056 (93)	1071 (108)		Rate of descent (5.2%)	FT / MIN	420	530	640	740	850
	CAT III	APPROVED											
	LOC-DME	1300 (337)											
CIRCLING	1470 (490)	1550 (570)	1930 (950)										
CIRCLING NOT AUTHORIZED NORTH OF THE AD													
	DME OEL	9	8	7	6	5	4	3	2				
	DIST THR	8.8	7.8	6.8	5.8	4.8	3.8	2.8	1.8				
	ALT (HEIGHT)	3830 (2867)	3510 (2547)	3190 (2227)	2870 (1907)	2560 (1597)	2240 (1277)	1920 (953)	1600 (637)				