

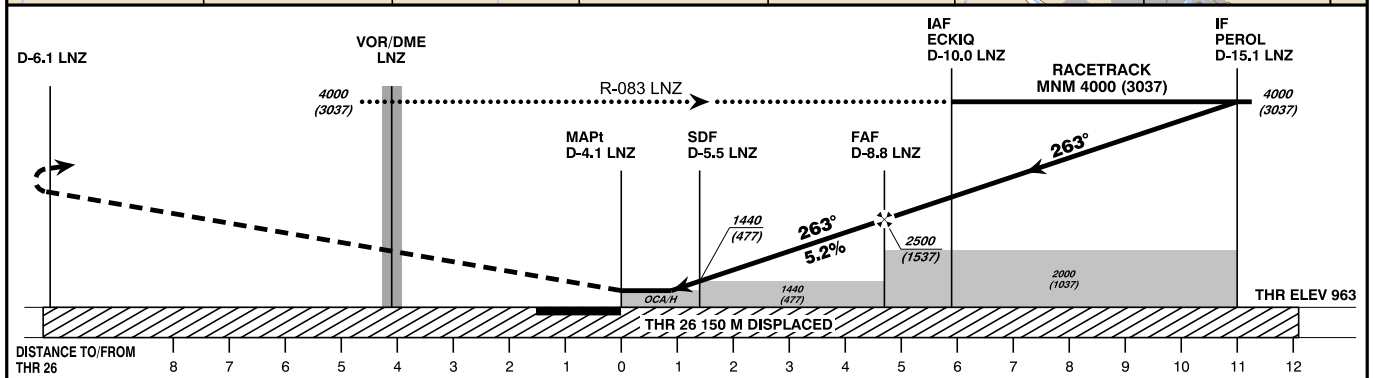
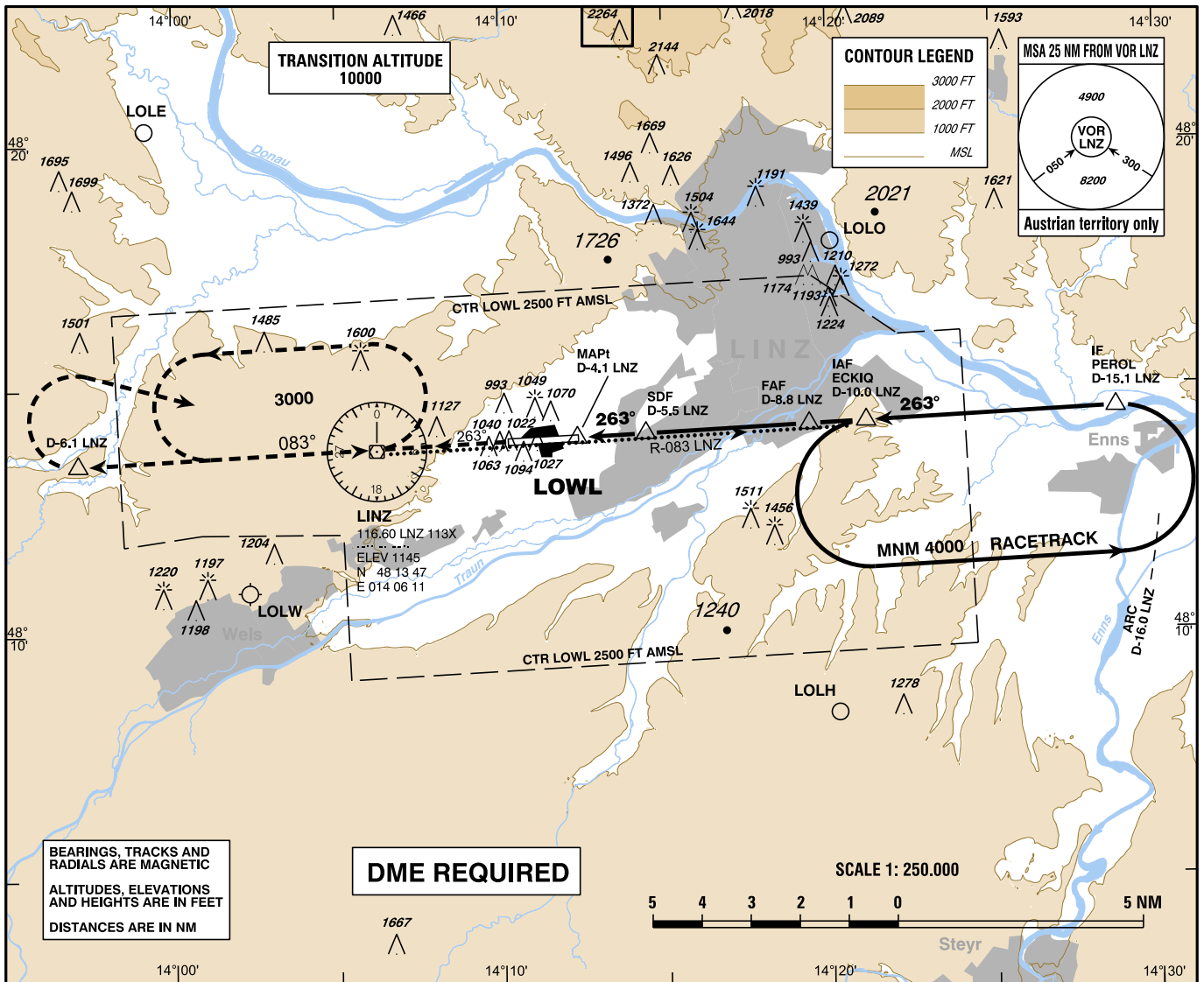
**INSTRUMENT
APPROACH
CHART - ICAO**

VAR 4° E

AD ELEV 980 FT
THR 26 ELEV 963 FT
HGT RELATED TO THR ELEV
CIRCLING HGT RELATED TO AD ELEV

RADAR 125.685
129.625
TOWER 118.800
ATIS 128.130

L I N Z (LOWL)
ÖSTERREICH AUSTRIA
VOR RWY 26



MISSED APPROACH: CLIMB ON R-263 LNZ, AT D-6.1 LNZ TURN RIGHT TO VOR/DME LNZ; CLIMB TO 3000 FT AMSL AND HOLD.

OCA (OCH) IN FT		A	B	C	D	D-8.8 LNZ to THR 26 - DISTANCE 8.8 NM (Timing not authorized for defining the MAPt)						
STRAIGHT-IN APPROACH	VOR/DME	1330 (367)				GS (KT)	80	100	120	140	160	180
	CIRCLING	1470 (490)	1550 (570)	1930 (950)		D-8.8 LNZ - THR 26	MIN : SEC	3:32	2:49	2:21	2:01	1:46
CIRCLING NOT AUTHORIZED NORTH OF THE AD					Rate of descent (5.2%)	FT / MIN	420	530	630	740	840	950

DME LNZ	8	7	6
DIST THR	3.9	2.9	1.9
ALT (HEIGHT)	2240 (1277)	1930 (967)	1610 (647)