

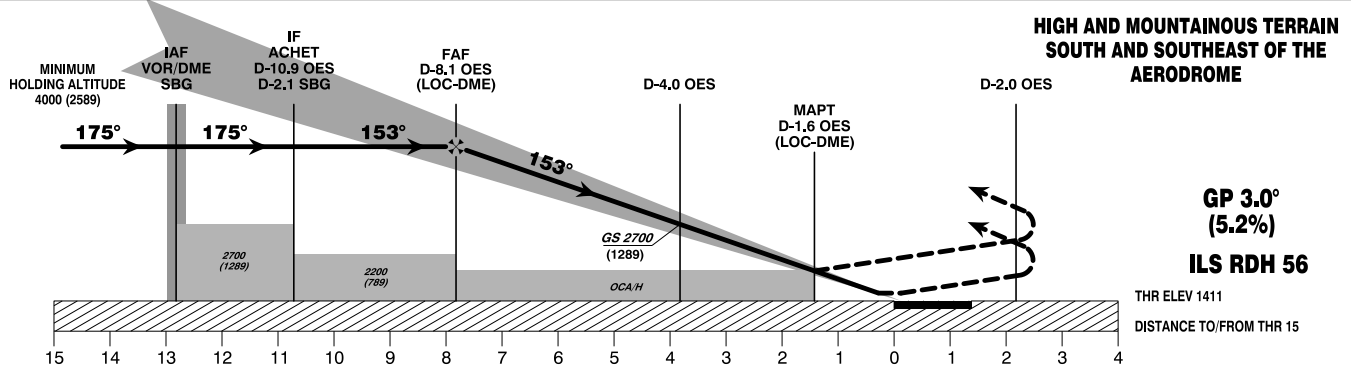
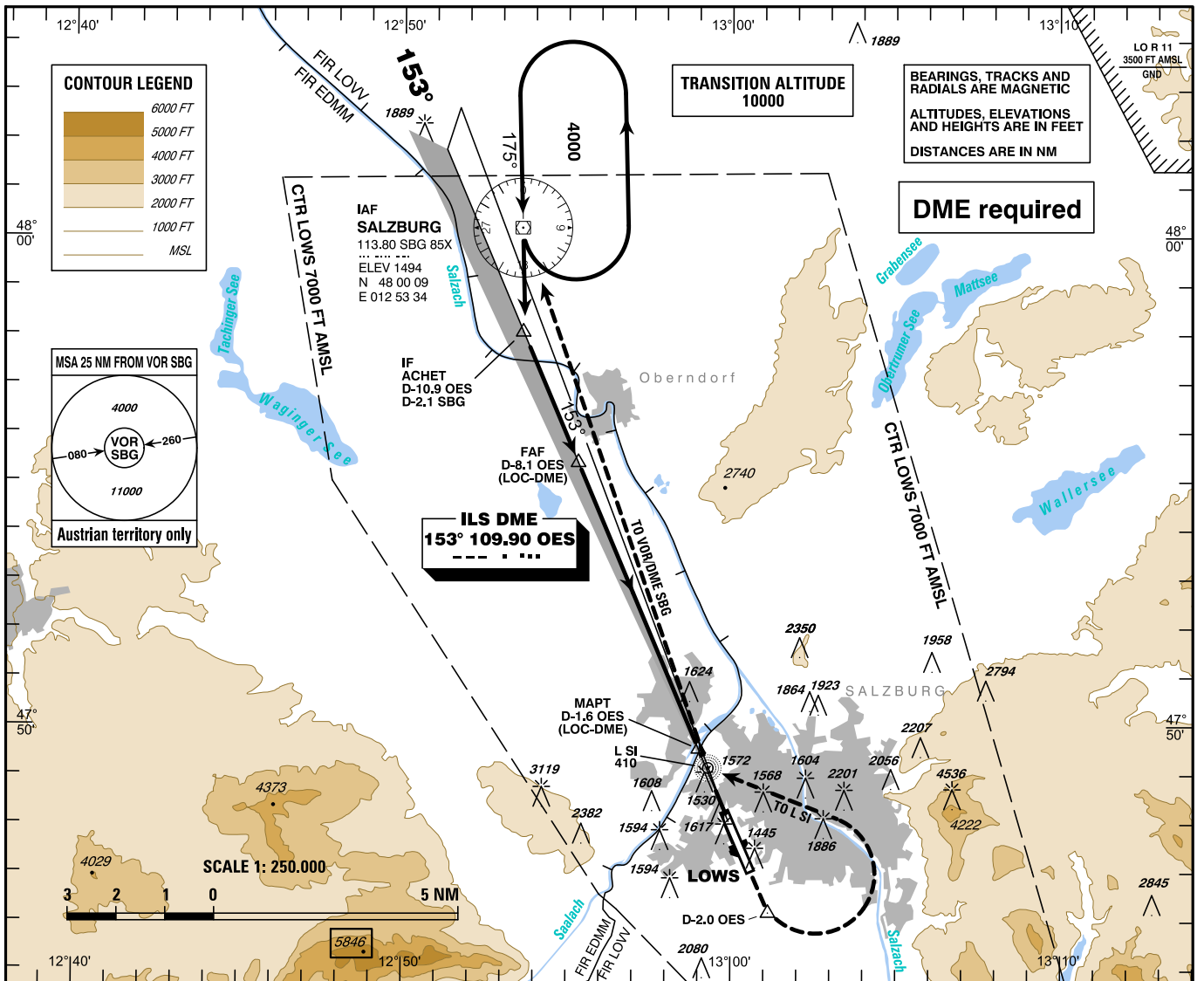
INSTRUMENT APPROACH CHART - ICAO

AD ELEV 1411 FT
THR 15 ELEV 1411 FT
HGT RELATED TO THR ELEV

RADAR 123.725
132.460
TOWER 118.100
ATIS 133.330

SALZBURG
ÖSTERREICH AUSTRIA
ILS or LOC RWY 15

VAR 4° E



MISSED APPROACH: CLIMB STRAIGHT AHEAD, AT D-2.0 OES (SOUTH), TURN LEFT AND CLIMB VIA L SI TO VOR/DME SBG; CLIMB TO 6000 FT AMSL AND HOLD.
Note 1: Accelerate NOT before turn is completed and NOT below 2500 FT AMSL.
Note 2: Observe the resulting speed limits and MNM bank angle!

	MA - CLIMB GRADIENT	OCA (OCH) MAX IAS MNM BANK ANGLE	A	B	C	D / D _L	D-8.1 OES to THR 15 - DISTANCE 8.0 NM (Timing not authorized for defining the MAPt)																										
			120 KT	140 KT	165 KT	180 KT	GS (KT)	80	100	120	140	160	180																				
CAT I	2.5 %		1859 (448)	1968 (557)	2110 (699)	2537 (1126)	D-8.1 OES - THR 15 Rate of descent (5.2%) FT / MIN	5:58	4:46	3:59	3:25	2:59	2:39																				
	4 %		1661 (250)	1673 (262)	1683 (272)	2120 (709)		420	530	640	740	850	960																				
	5 %		1661 (250)	1673 (262)	1682 (271)	1774 (363)																											
LOC-DME	2.5 %		1900 (489)	1900 (489)	2110 (699)	2750 (1339)	FOR LOWER DA (DH) SEE LOWS AD 2.22, item 6																										
	4 %		1900 (489)	1900 (489)	1900 (489)	2230 (819)																											
CIRCLING		see LOWS AD 2 MAP 14-1					<table border="1"> <thead> <tr> <th>DME OES</th> <th>7</th> <th>6</th> <th>5</th> <th>4</th> <th>3</th> <th>2</th> </tr> </thead> <tbody> <tr> <td>DIST THR</td> <td>6.8</td> <td>5.8</td> <td>4.8</td> <td>3.8</td> <td>2.8</td> <td>1.8</td> </tr> <tr> <td>ALT (HEIGHT)</td> <td>3640 (2229)</td> <td>3320 (1909)</td> <td>3000 (1589)</td> <td>2680 (1269)</td> <td>2370 (959)</td> <td>2050 (639)</td> </tr> </tbody> </table>						DME OES	7	6	5	4	3	2	DIST THR	6.8	5.8	4.8	3.8	2.8	1.8	ALT (HEIGHT)	3640 (2229)	3320 (1909)	3000 (1589)	2680 (1269)	2370 (959)	2050 (639)
DME OES	7	6	5	4	3	2																											
DIST THR	6.8	5.8	4.8	3.8	2.8	1.8																											
ALT (HEIGHT)	3640 (2229)	3320 (1909)	3000 (1589)	2680 (1269)	2370 (959)	2050 (639)																											

CHANGE: MISSED APPROACH; NDB SBG REMOVED; NEW FIX ACHET; SDF; OCA OCH; MOCAs BOXES; GP CHECK ALTITUDE; TIMING/ROD TABLE; ALTITUDE TABLE; OBSTACLES; EDITORIAL