

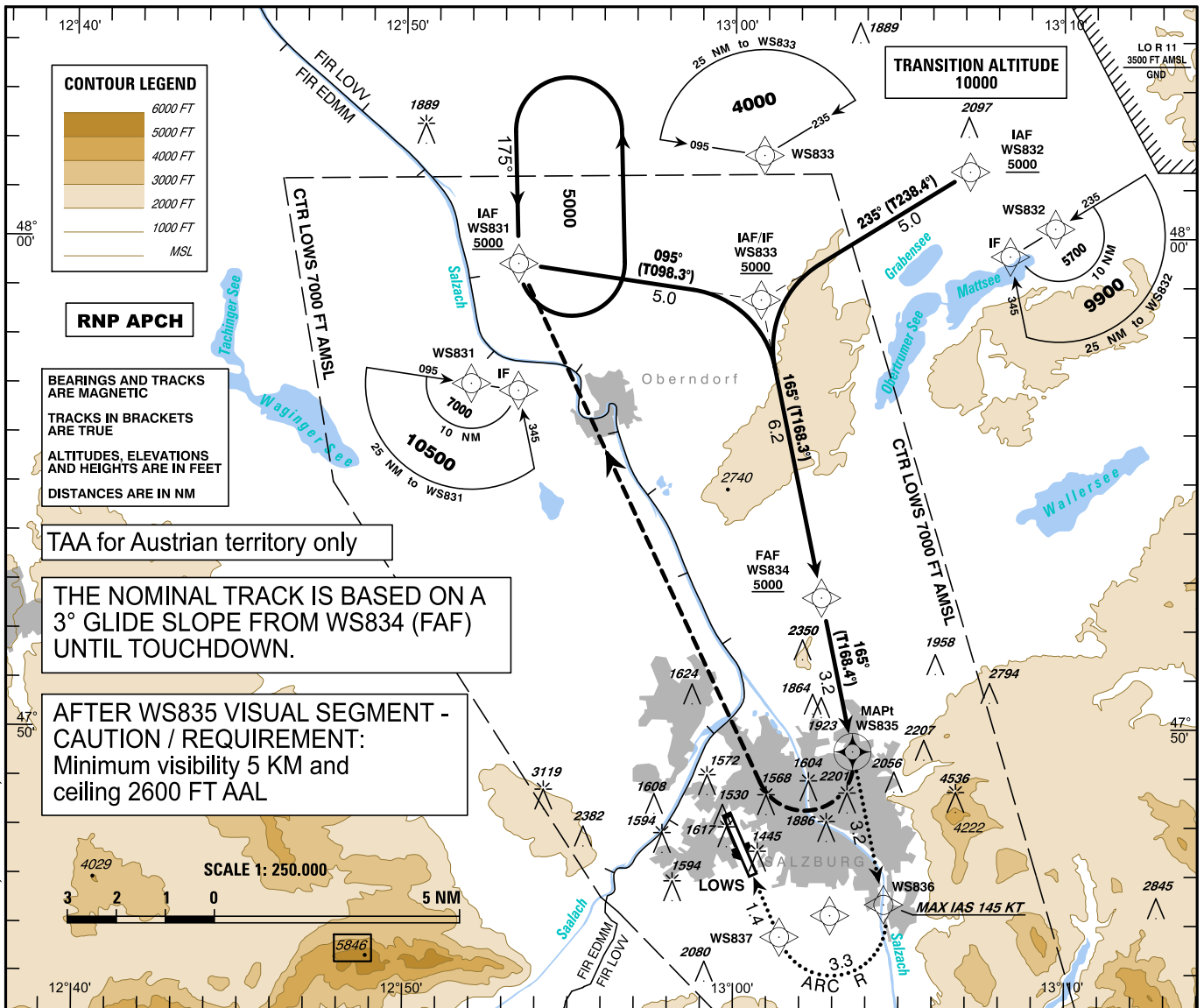
**INSTRUMENT
APPROACH
CHART - ICAO**

VAR 4° E

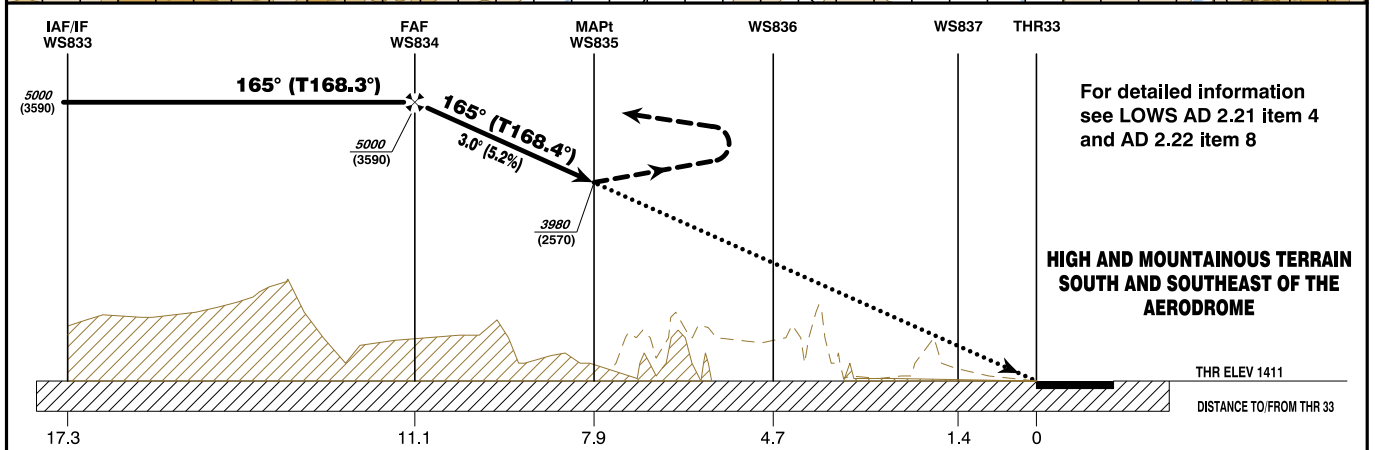
AD ELEV 1411 FT
THR 33 ELEV 1411 FT
HGT RELATED TO AD ELEV

RADAR 123.725
132.460
TOWER 118.100
ATIS 133.330

SALZBURG
ÖSTERREICH AUSTRIA
RNP VISUAL V RWY 33



CHANGE: LO R 11; OBSTACLES; EDITORIAL



For detailed information see LOWS AD 2.21 item 4 and AD 2.22 item 8

HIGH AND MOUNTAINOUS TERRAIN SOUTH AND SOUTHEAST OF THE AERODROME

MISSED APPROACH: AT WS835 TURN RIGHT TO WS831; CLIMB TO 6000 FT AMSL AND HOLD.
NOTE: MISSED APPROACH SPEED IS LIMITED TO MAX IAS 185 KT UNTIL TURN COMPLETED !

OCA (OCH) IN FT	A	B	C	D
LNAV	3980 (2570)			

DIST in NM to WS835	3	2	1
ALTITUDE (HEIGHT)	4940 (3529)	4620 (3209)	4300 (2889)

WS834 to WS835 - DISTANCE 3.2 NM (Timing not authorized for defining the MAPt)							
	GS (KT)	80	100	120	140	160	180
WS834 - WS835	MIN : SEC	2:24	1:55	1:36	1:22	1:12	1:04
Rate of descent (5.2%)	FT / MIN	420	530	640	740	850	960

Instrument Approach Procedure Coding Table Salzburg RNP VISUAL V RWY 33

Path Terminator	Waypoint				Course/ Track ° MAG (° True)	DIST NM	Turn Direction	Constraints		Navigation Specification	Remarks
	Identifier	Type	Flyover	Coordinates				Level	Speed		
IF	WS831	IAF	no	N475928.01 E0125325.19				A5000+		RNP APCH	
IF	WS832	IAF	no	N480121.80 E0130707.80				A5000+		RNP APCH	
IF / TF	WS833	IAF / IF	no	N475844.65 E0130047.22	095° (098.3°) 235° (238.4°)	5.0	right left	A5000+		RNP APCH	
TF	WS834	FAF	no	N475240.41 E0130238.87	165° (168.3°)	6.2		A5000+		RNP APCH	
TF	WS835	MAPt	yes	N474932.39 E0130336.26	165° (168.4°)	3.2				RNP APCH	
DF	WS831	MAHF	yes	N475928.01 E0125325.19			right	A6000+	K185-	RNP APCH	

Visual Approach Segment (after WS835) - Possible Coding

Path Terminator	Waypoint				Course/ Track ° MAG (° True)	DIST NM	Turn Direction	Constraints		Navigation Specification	Remarks
	Identifier	Type	Flyover	Coordinates				Level	Speed		
TF	WS836		no	N474625.49 E0130433.25	165° (168.4°)	3.2			K145-		VPA -3.0°
RF	WS837		no	N474545.56 E0130123.97		3.3	right		K145-		VPA -3.0°
TF	RW33		yes	N474702.57 E0130035.34	333° (336.9°)	1.4					VPA -3.0°
DF	WS831		yes	N475928.01 E0125325.19			right	A6000+			

ARC Centre Waypoint		ARC Radius NM	Remarks
Identifier	Coordinates		
WS838	N474611.96 E0130255.61	1.1	

NOTE: Vertical path angle should be coded with -3° starting from WS834 until touchdown!

RNAV Holding

Holding Point	Inbound Track ° True	Inbound Track ° MAG	Turn Direction	MAX IAS	Minimum Holding Altitude FT MSL / FL	Time	DIST NM	Remarks
WS831	178.8°	175°	left		A5000	1 MIN		