

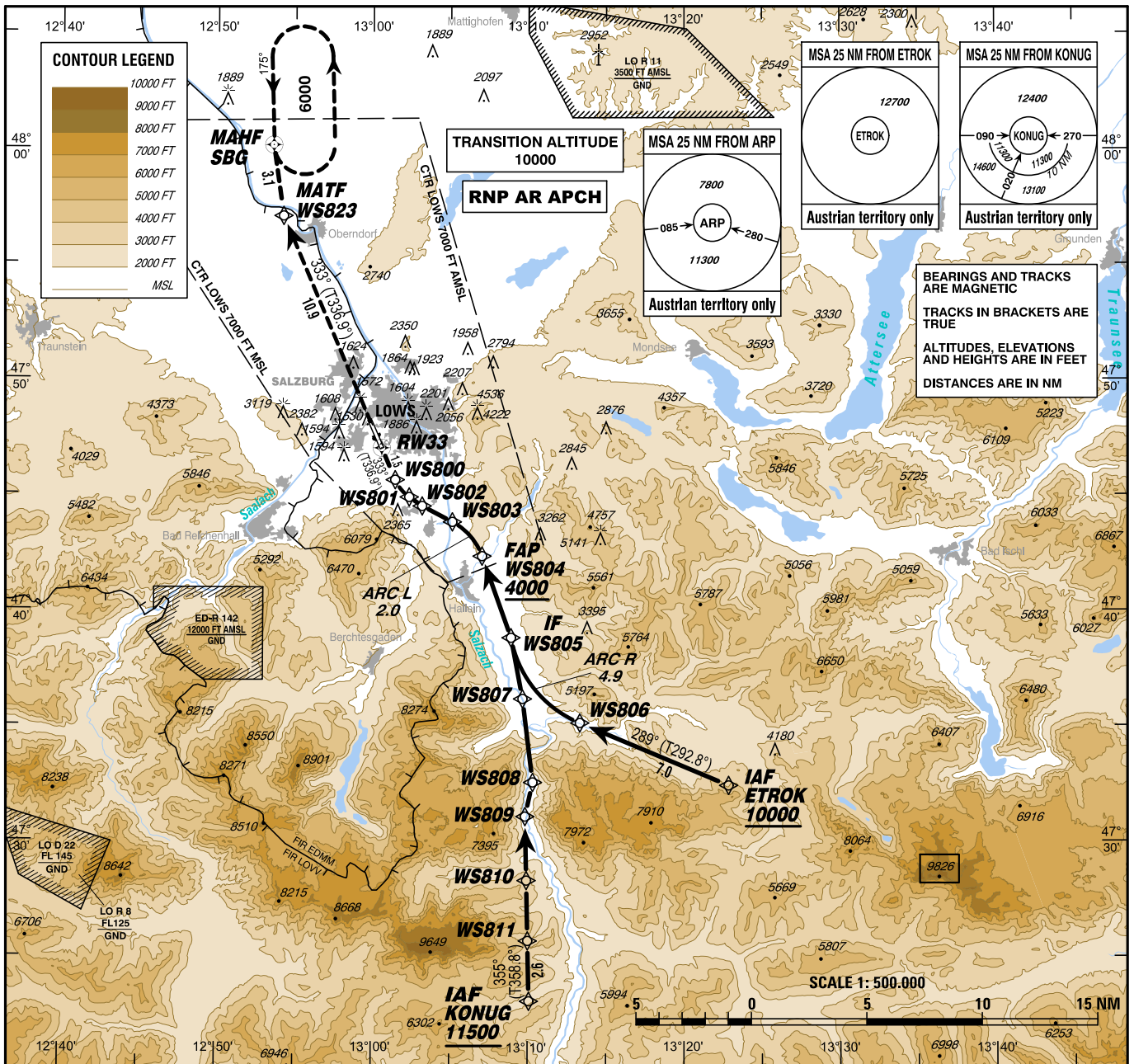
INSTRUMENT APPROACH CHART - ICAO

VAR 4° E

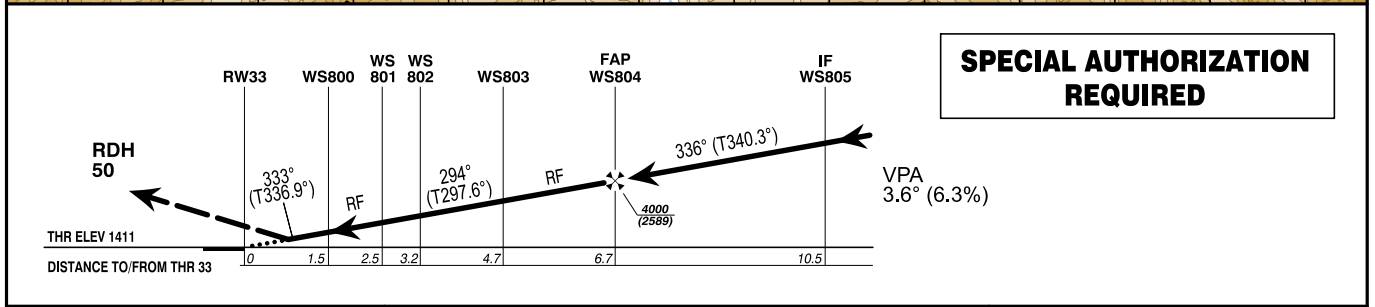
AD ELEV 1411 FT
THR 33 ELEV 1411 FT
HGT RELATED TO THR ELEV

RADAR	123.725
TOWER	132.460
ATIS	118.100
	133.330

SALZBURG
ÖSTERREICH AUSTRIA
RNP 2 RWY 33 (AR)



CHANGE: LO R 11; OBSTACLES: EDITORIAL



SPECIAL AUTHORIZATION REQUIRED

OCA (OCH) IN FT	A	B	C
RNP 0.3	1780 (369)		

GS (KT)	80	100	120	140	160	180
FT / MIN	510	640	770	890	1020	1150

1. Dual GNSS and at least one IRU or equivalent
2. DME/DME, LOC and VOR/DME updating not authorized
3. For uncompensated Baro-VNAV systems, procedure not authorized below AD temp -15°C
4. VPA exceeds 3.6° above +12°C
5. PAPI angle not coincident with the VPA

This procedure is permissible for special equipped aircraft and requires authorization by Austro Control GmbH

MISSED APPROACH:
CLIMB VIA WS823 AND SBG TO 6000 FT AMSL AND HOLD.

(for detailed information see LOWS AD 2.22, Item 9)

Instrument Approach Procedure Coding Table Salzburg RNP Z RWY 33 (AR) - via ETROK										
Path Terminator	Waypoint				Course/Track ° MAG (° True)	DIST NM	Turn Direction	ARC Centre Waypoint		ARC Radius NM
	Identifier	Type	Flyover	Coordinates				Identifier	Coordinates	
IF	ETROK	IAF	no	N473227.17 E0132251.17						
TF	WS806		no	N473509.18 E0131319.96	289° (292.8°)	7.0				
RF	WS805	IF	no	N473850.16 E0130854.96		4.9	right	WS822	N473945.81 E0131611.01	5.0
TF	WS804	FAP	no	N474221.95 E0130702.79	336° (340.3°)	3.8				
RF	WS803		no	N474350.81 E0130508.18		2.0	left	WS821	N474127.34 E0130317.04	2.7
TF	WS802		no	N474431.87 E0130311.74	294° (297.6°)	1.5				
TF	WS801		no	N474455.14 E0130221.70	301° (304.6°)	0.7	right			
RF	WS800		no	N474539.81 E0130127.60		1.0	right	WS820	N474620.41 E0130348.99	1.7
TF	RW33		yes	N474702.57 E0130035.34	333° (336.9°)	1.5				
TF	WS823	MATF	no	N475704.79 E0125413.55	333° (336.9°)	10.9				
TF	SBG	MAHF	yes	N480009.30 E0125333.94	348° (351.8°)	3.1	right			
Waypoint	Constraints		RNP Value NM	Navigation Specification	Remarks					
Identifier	Level	Speed								
ETROK	A10000+		0.3	RNP AR APCH						
WS806	A7400+		0.3	RNP AR APCH						
WS805	A5500+		0.3	RNP AR APCH						
WS804	A4000+		0.3	RNP AR APCH						
WS803			0.3	RNP AR APCH						
WS802			0.3	RNP AR APCH						
WS801			0.3	RNP AR APCH						
WS800			0.3	RNP AR APCH						
RW33			0.3	RNP AR APCH						
WS823			1.0	RNP AR APCH						
SBG	A6000+		1.0	RNP AR APCH						
RNAV Holding										
Holding Point	Inbound Track ° True	Inbound Track ° MAG	Turn Direction	MAX IAS	Minimum Holding Altitude FT MSL / FL	Time	DIST NM	Remarks		
SBG	178.8°	175°	left		A6000	1 MIN				

**Instrument Approach Procedure Coding Table
Salzburg RNP Z RWY 33 (AR) - via KONUG**

Path Terminator	Waypoint				Course/ Track ° MAG (° True)	DIST NM	Turn Direction	ARC Centre Waypoint		ARC Radius NM
	Identifier	Type	Flyover	Coordinates				Identifier	Coordinates	
IF	KONUG	IAF	no	N472306.07 E0131004.66						
TF	WS811		no	N472542.82 E0130959.79	355° (358.8°)	2.6				
TF	WS810		no	N472819.58 E0130954.91	355° (358.8°)	2.6				
TF	WS809		no	N473105.81 E0130949.73	355° (358.8°)	2.8				
TF	WS808		no	N473234.56 E0131018.56	009° (012.4°)	1.5	right			
TF	WS807		no	N473611.40 E0130939.49	349° (353.1°)	3.6	left			
TF	WS805	IF	no	N473850.16 E0130854.96	345° (349.3°)	2.7	left			
TF	WS804	FAP	no	N474221.95 E0130702.79	336° (340.3°)	3.8	left			
RF	WS803		no	N474350.81 E0130508.18		2.0	left	WS821	N474127.34 E0130317.04	2.7
TF	WS802		no	N474431.87 E0130311.74	294° (297.6°)	1.5				
TF	WS801		no	N474455.14 E0130221.70	301° (304.6°)	0.7	right			
RF	WS800		no	N474539.81 E0130127.60		1.0	right	WS820	N474620.41 E0130348.99	1.7
TF	RW33		yes	N474702.57 E0130035.34	333° (336.9°)	1.5				
TF	WS823	MATF	no	N475704.79 E0125413.55	333° (336.9°)	10.9				
TF	SBG	MAHF	yes	N480009.30 E0125333.94	348° (351.8°)	3.1	right			

Waypoint Identifier	Constraints		RNP Value NM	Navigation Specification	Remarks
	Level	Speed			
KONUG	A11500+		0.3	RNP AR APCH	
WS811	A10500+		0.3	RNP AR APCH	
WS810	A9500+		0.3	RNP AR APCH	
WS809	A8500+		0.3	RNP AR APCH	
WS808	A7900+		0.3	RNP AR APCH	
WS807	A6500+		0.3	RNP AR APCH	
WS805	A5500+		0.3	RNP AR APCH	
WS804	A4000+		0.3	RNP AR APCH	
WS803			0.3	RNP AR APCH	
WS802			0.3	RNP AR APCH	
WS801			0.3	RNP AR APCH	
WS800			0.3	RNP AR APCH	
RW33			0.3	RNP AR APCH	
WS823			1.0	RNP AR APCH	
SBG	A6000+		1.0	RNP AR APCH	

RNAV Holding

Holding Point	Inbound Track ° True	Inbound Track ° MAG	Turn Direction	MAX IAS	Minimum Holding Altitude FT MSL / FL	Time	DIST NM	Remarks
SBG	178.8°	175°	left		A6000	1 MIN		