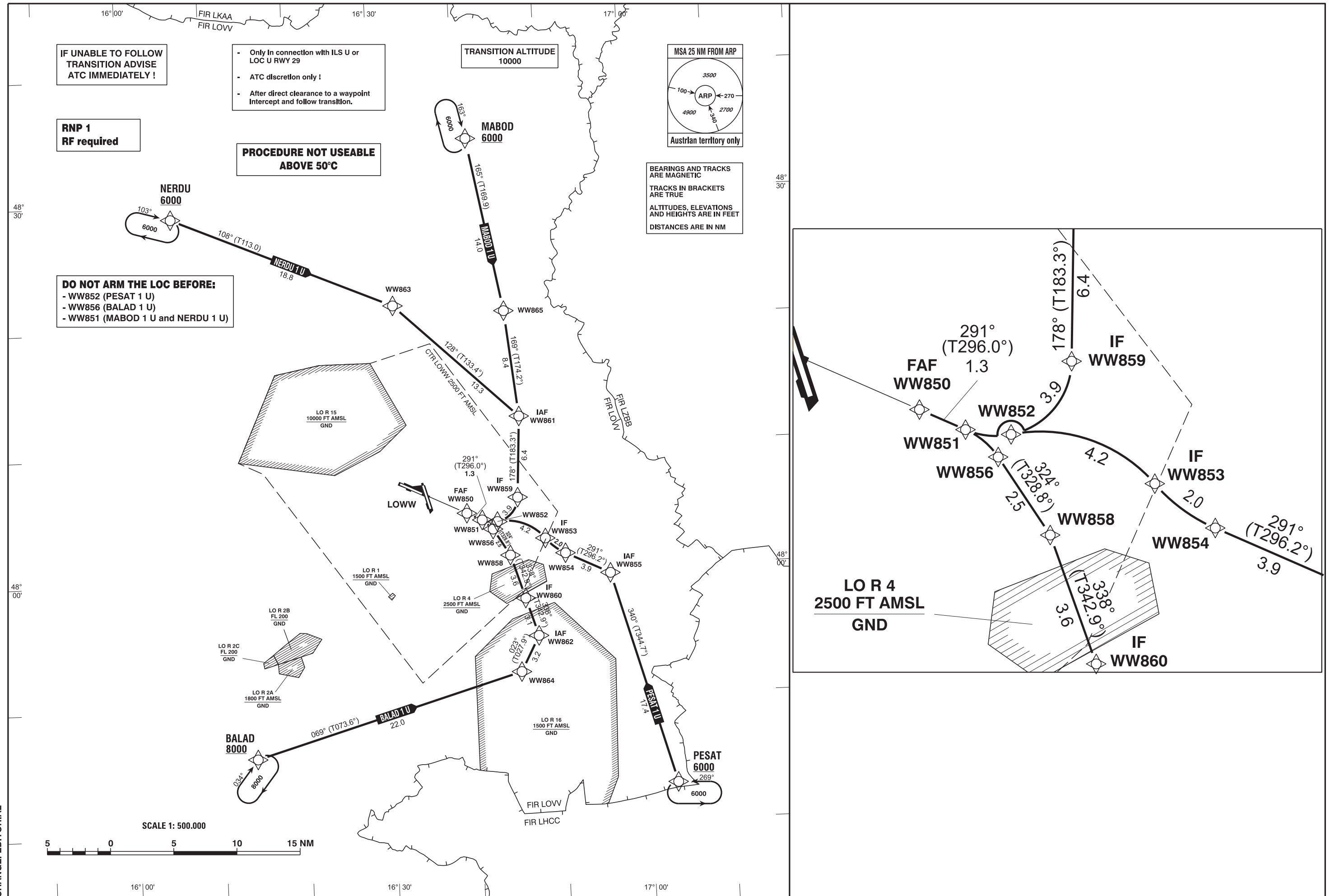


RADAR	118.775	125.175	129.050	134.675	136.250
ARRIVAL	119.800	134.125			
TOWER	119.400	123.800	124.475		
GROUND	121.600	121.775			
ATIS	122.955				



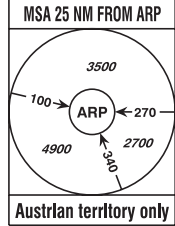
IF UNABLE TO FOLLOW
TRANSITION ADVISE
ATC IMMEDIATELY !

- Only In connection with ILS U or LOC U RWY 29
- ATC discretion only !
- After direct clearance to a waypoint intercept and follow transition.

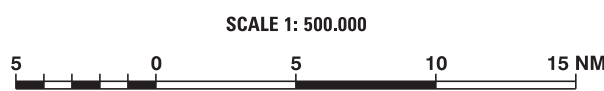
RNP 1
RF required

PROCEDURE NOT USEABLE
ABOVE 50°C

DO NOT ARM THE LOC BEFORE:
- WW852 (PESAT 1 U)
- WW856 (BALAD 1 U)
- WW851 (MABOD 1 U and NERDU 1 U)



BEARINGS AND TRACKS
ARE MAGNETIC
TRACKS IN BRACKETS
ARE TRUE
ALTITUDES, ELEVATIONS
AND HEIGHTS ARE IN FEET
DISTANCES ARE IN NM



CHANGE: EDITORIAL

Designator		Route						Remarks			
BALAD 1 U BALAD one uniform transition		BALAD – WW864 – WW862 – WW860 – WW858 – WW856 – WW851 – WW850									
RNAV Transition Coding Table of BALAD 1 U											
Path Terminator	Waypoint				Course/Track ° MAG (° True)	DIST NM	Turn Direction	Constraints		Navigation Specification	Remarks
	Identifier	Flyover	Type	Coordinates				Level	Speed		
IF	BALAD	no		N474600.21 E0161402.56				A8000+		RNP 1	
TF	WW864	no		N475208.70 E0164524.53	069° (073.6°)	22.0		A6000+		RNP 1	
TF	WW862	no	IAF	N475456.67 E0164736.74	023° (027.9°)	3.2	left	A5000+		RNP 1	
TF	WW860	no	IF	N475756.61 E0164614.35	338° (342.9°)	3.1	left	A4000+		RNP 1	
TF	WW858	no		N480123.49 E0164439.43	338° (342.9°)	3.6		A3000+		RNP 1	
TF	WW856	no		N480330.41 E0164244.88	324° (328.8°)	2.5	left		K185-	RNP 1	
RF	WW851	no		N480415.93 E0164130.59		1.1	left	A2100- A1900+		RNP 1	ARC Center: WW896 N480228.42 E0164012.28 ARC Radius: 2.0 NM
TF	WW850	no	FAF	N480450.79 E0163944.01	291° (296.0)	1.3		A1900+		RNP 1	

Designator		Route						Remarks			
MABOD 1 U MABOD one uniform transition		MABOD – WW865 – WW861 – WW859 – WW851 – WW850									
RNAV Transition Coding Table of MABOD 1 U											
Path Terminator	Waypoint				Course/Track ° MAG (° True)	DIST NM	Turn Direction	Constraints		Navigation Specification	Remarks
	Identifier	Flyover	Type	Coordinates				Level	Speed		
IF	MABOD	no		N483428.41 E0164124.35				A6000+		RNP 1	
TF	WW865	no		N482043.86 E0164505.39	165° (169.9°)	14.0				RNP 1	
TF	WW861	no	IAF	N481221.36 E0164621.46	169° (174.2°)	8.4	right	A5000+		RNP 1	
TF	WW859	no	IF	N480556.73 E0164547.90	178° (183.3°)	6.4	right	A3000+	K185-	RNP 1	
RF	WW851	no		N480415.93 E0164130.59		3.9	right	A2100- A1900+		RNP 1	ARC Center: WW897 N480603.67 E0164249.17 ARC Radius: 2.0 NM
TF	WW850	no	FAF	N480450.79 E0163944.01	291° (296.0)	1.3		A1900+		RNP 1	

Designator		Route						Remarks			
NERDU 1 U NERDU one uniform transition		NERDU – WW863 – WW861 – WW859 – WW851 – WW850									
RNAV Transition Coding Table of NERDU 1 U											
Path Terminator	Waypoint				Course/Track ° MAG (° True)	DIST NM	Turn Direction	Constraints		Navigation Specification	Remarks
	Identifier	Flyover	Type	Coordinates				Level	Speed		
IF	NERDU	no		N482853.39 E0160557.34				A6000+		RNP 1	
TF	WW863	no		N482128.76 E0163157.79	108° (113.0°)	18.8				RNP 1	
TF	WW861	no	IAF	N481221.36 E0164621.46	128° (133.4°)	13.3	right	A5000+		RNP 1	
TF	WW859	no	IF	N480556.73 E0164547.90	178° (183.3°)	6.4	right	A3000+	K185-	RNP 1	
RF	WW851	no		N480415.93 E0164130.59		3.9	right	A2100- A1900+		RNP 1	ARC Center: WW897 N480603.67 E0164249.17 ARC Radius: 2.0 NM
TF	WW850	no	FAF	N480450.79 E0163944.01	291° (296.0)	1.3		A1900+		RNP 1	

Designator		Route						Remarks			
PESAT 1 U PESAT one uniform transition		PESAT – WW855 – WW854 – WW853 – WW852 – WW851 – WW850									
RNAV Transition Coding Table of PESAT 1 U											
Path Terminator	Waypoint				Course/Track ° MAG (° True)	DIST NM	Turn Direction	Constraints		Navigation Specification	Remarks
	Identifier	Flyover	Type	Coordinates				Level	Speed		
IF	PESAT	no		N474253.75 E0170311.37				A6000+		RNP 1	
TF	WW855	no	IAF	N475940.22 E0165620.36	340° (344.7°)	17.4		A5000+		RNP 1	
TF	WW854	no		N480122.98 E0165108.97	291° (296.2°)	3.9	left			RNP 1	
RF	WW853	no	IF	N480237.39 E0164851.23		2.0	right	A3500+		RNP 1	ARC Center: WW899 N480524.96 E0165406.37 ARC Radius: 4.5 NM
RF	WW852	no		N480405.24 E0164317.54		4.2	left	A2200+	K185-	RNP 1	ARC Center: WW898 N480008.12 E0164411.38 ARC Radius: 4.0 NM
RF	WW851	no		N480415.93 E0164130.59		1.2	right	A2100- A1900+		RNP 1	ARC Center: WW897 N480603.67 E0164249.17 ARC Radius: 2.0 NM
TF	WW850	no	FAF	N480450.79 E0163944.01	291° (296.0)	1.3		A1900+		RNP 1	

RNAV Holding								
Holding Point	Inbound Track ° True	Inbound Track ° MAG	Turn Direction	MAX IAS	Minimum Holding Altitude FT MSL / FL	Time	DIST NM	Remarks
BALAD	038.6°	034°	right		A8000	1 MIN		
MABOD	167.7°	163°	right		A6000	1 MIN		
NERDU	107.6°	103°	right		A6000	1 MIN		
PESAT	273.9°	269°	left		A6000	1 MIN		