

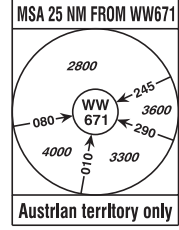
|         |         |         |         |         |         |
|---------|---------|---------|---------|---------|---------|
| RADAR   | 118.775 | 125.175 | 129.050 | 134.675 | 136.250 |
| ARRIVAL | 119.800 | 134.125 |         |         |         |
| TOWER   | 119.400 | 123.800 | 124.475 |         |         |
| GROUND  | 121.600 | 121.775 |         |         |         |
| ATIS    | 122.955 |         |         |         |         |

IF UNABLE TO FOLLOW  
TRANSITION ADVISE  
ATC IMMEDIATELY !

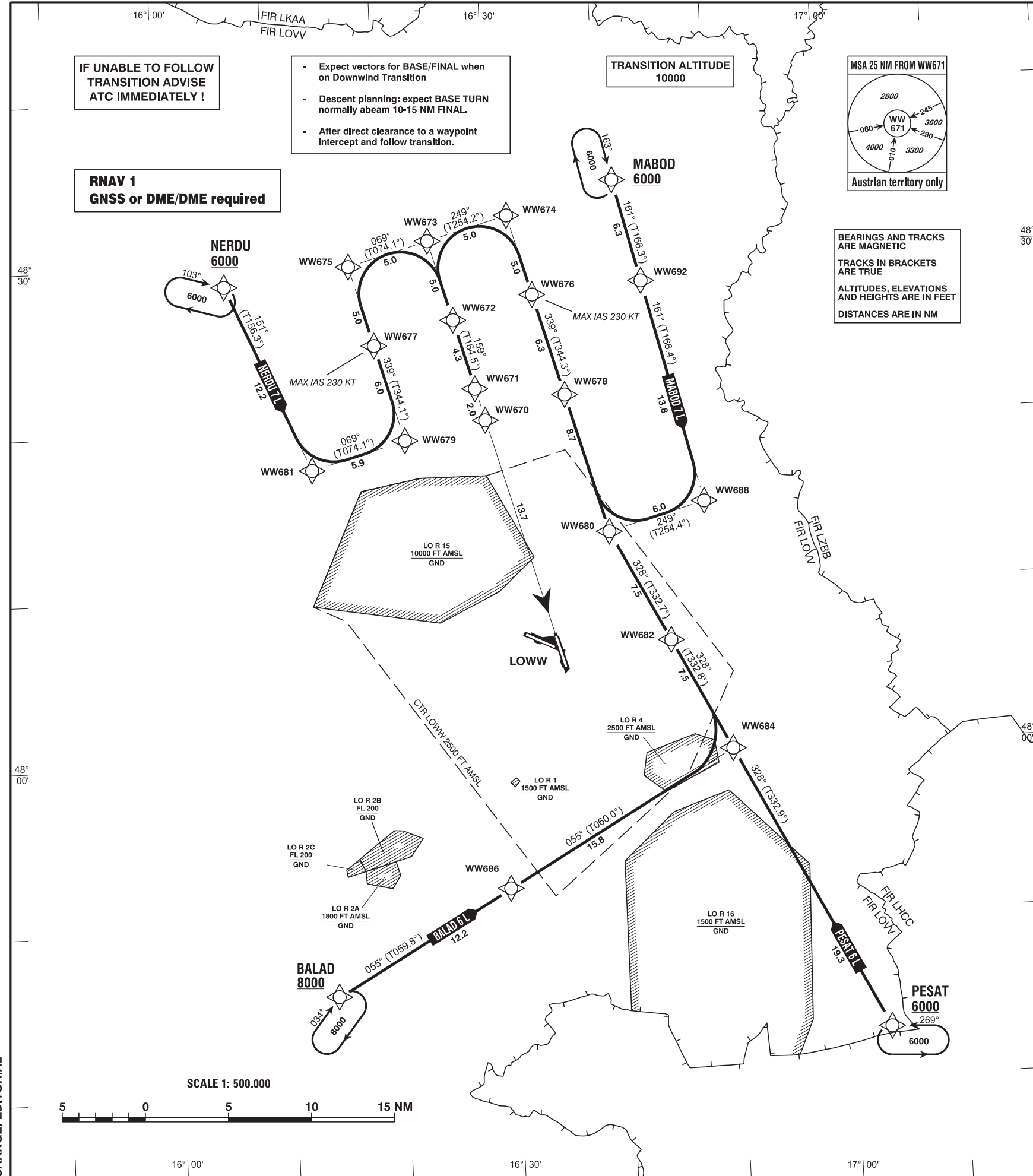
- Expect vectors for BASE/FINAL when on Downwind Transition
- Descent planning: expect BASE TURN normally abeam 10-15 NM FINAL.
- After direct clearance to a waypoint intercept and follow transition.

RNAV 1  
GNSS or DME/DME required

TRANSITION ALTITUDE  
10000



BEARINGS AND TRACKS  
ARE MAGNETIC  
TRACKS IN BRACKETS  
ARE TRUE  
ALTITUDES, ELEVATIONS  
AND HEIGHTS ARE IN FEET  
DISTANCES ARE IN NM



Intentionally left blank

| Designator                                    | Route   |         |                           |                                       |            |                   |             | Remarks |                             |         |
|---|---|---------|---------------------------|---------------------------------------|------------|-------------------|-------------|---------|-----------------------------|---------|
| <b>BALAD 6 L</b><br>Balad six lima transition | BALAD - WW686 - WW684 - WW682 - WW680 - WW678 - WW676 - WW674 - WW673 - WW672 - WW671 |         |                           |                                       |            |                   |             |         |                             |         |
| RNAV Transition Coding Table of BALAD 6 L     |   |         |                           |                                       |            |                   |             |         |                             |         |
| Path Terminator                               | Waypoint  |         |                           | Course/<br>Track<br>° MAG<br>(° True) | DIST<br>NM | Turn<br>Direction | Constraints |         | Navigation<br>Specification | Remarks |
|   | Identifier  | Flyover | Coordinates               |                                       |            |                   | Level       | Speed   |                             |         |
| IF  | BALAD   | no      | N474600.21<br>E0161402.56 |                                       |            |                   | A8000+      |         | RNAV 1                      |         |
| TF  | WW686   | no      | N475208.28<br>E0162943.88 | 055°<br>(059.8°)                      | 12.2       |                   | A5000+      |         | RNAV 1                      |         |
| TF  | WW684   | no      | N480001.58<br>E0165007.89 | 055°<br>(060.0°)                      | 15.8       |                   | A5000+      |         | RNAV 1                      |         |
| TF  | WW682   | no      | N480641.40<br>E0164500.42 | 328°<br>(332.8°)                      | 7.5        | left              | A5000+      |         | RNAV 1                      |         |
| TF  | WW680   | no      | N481321.01<br>E0163951.68 | 328°<br>(332.7°)                      | 7.5        |                   | A5000+      |         | RNAV 1                      |         |
| TF  | WW678   | no      | N482141.30<br>E0163621.20 | 339°<br>(344.3°)                      | 8.7        | right             | A5000+      |         | RNAV 1                      |         |
| TF  | WW676   | no      | N482746.61<br>E0163346.76 | 339°<br>(344.3°)                      | 6.3        |                   | A5000+      | K230-   | RNAV 1                      |         |
| TF  | WW674   | no      | N483235.64<br>E0163144.11 | 339°<br>(344.3°)                      | 5.0        |                   | A5000+      |         | RNAV 1                      |         |
| TF  | WW673   | no      | N483113.99<br>E0162429.77 | 249°<br>(254.2°)                      | 5.0        | left              | A5000+      |         | RNAV 1                      |         |
| TF  | WW672   | no      | N482625.53<br>E0162632.83 | 159°<br>(164.2°)                      | 5.0        | left              | A5000+      |         | RNAV 1                      |         |
| TF  | WW671   | no      | N482215.23<br>E0162816.89 | 159°<br>(164.5°)                      | 4.3        |                   | A5000+      |         | RNAV 1                      |         |

| Designator                                      | Route   |         |                           |                                       |            |                   |             | Remarks |                             |         |
|---|---|---------|---------------------------|---------------------------------------|------------|-------------------|-------------|---------|-----------------------------|---------|
| <b>MABOD 7 L</b><br>Mabod seven lima transition | MABOD - WW692 - WW688 - WW680 - WW678 - WW676 - WW674 - WW673 - WW672 - WW671 |         |                           |                                       |            |                   |             |         |                             |         |
| RNAV Transition Coding Table of MABOD 7 L       |   |         |                           |                                       |            |                   |             |         |                             |         |
| Path Terminator                                 | Waypoint  |         |                           | Course/<br>Track<br>° MAG<br>(° True) | DIST<br>NM | Turn<br>Direction | Constraints |         | Navigation<br>Specification | Remarks |
|   | Identifier  | Flyover | Coordinates               |                                       |            |                   | Level       | Speed   |                             |         |
| IF  | MABOD   | no      | N483428.41<br>E0164124.35 |                                       |            |                   | A6000+      |         | RNAV 1                      |         |
| TF  | WW692   | no      | N482821.00<br>E0164339.00 | 161°<br>(166.3°)                      | 6.3        |                   | A5000+      |         | RNAV 1                      |         |
| TF  | WW688   | no      | N481457.85<br>E0164830.52 | 161°<br>(166.4°)                      | 13.8       |                   | A5000+      |         | RNAV 1                      |         |
| TF  | WW680   | no      | N481321.01<br>E0163951.68 | 249°<br>(254.4°)                      | 6.0        | right             | A5000+      |         | RNAV 1                      |         |
| TF  | WW678   | no      | N482141.30<br>E0163621.20 | 339°<br>(344.3°)                      | 8.7        | right             | A5000+      |         | RNAV 1                      |         |
| TF  | WW676   | no      | N482746.61<br>E0163346.76 | 339°<br>(344.3°)                      | 6.3        |                   | A5000+      | K230-   | RNAV 1                      |         |
| TF  | WW674   | no      | N483235.64<br>E0163144.11 | 339°<br>(344.3°)                      | 5.0        |                   | A5000+      |         | RNAV 1                      |         |
| TF  | WW673   | no      | N483113.99<br>E0162429.77 | 249°<br>(254.2°)                      | 5.0        | left              | A5000+      |         | RNAV 1                      |         |
| TF  | WW672   | no      | N482625.53<br>E0162632.83 | 159°<br>(164.2°)                      | 5.0        | left              | A5000+      |         | RNAV 1                      |         |
| TF  | WW671   | no      | N482215.23<br>E0162816.89 | 159°<br>(164.5°)                      | 4.3        |                   | A5000+      |         | RNAV 1                      |         |

| Designator                                      | Route   | Remarks |
|---|---|---------|
| <b>NERDU 7 L</b><br>Nerdu seven lima transition | NERDU - WW681 - WW679 - WW677 - WW675 - WW673 - WW672 - WW671 |         |

**RNAV Transition Coding Table of NERDU 7 L**

| Path Terminator | Waypoint   |         |                           | Course/<br>Track<br>° MAG<br>(° True) | DIST<br>NM | Turn<br>Direction | Constraints |       | Navigation<br>Specification | Remarks |
|-----------------|------------|---------|---------------------------|---------------------------------------|------------|-------------------|-------------|-------|-----------------------------|---------|
|                 | Identifier | Flyover | Coordinates               |                                       |            |                   | Level       | Speed |                             |         |
| IF              | NERDU      | no      | N482853.39<br>E0160557.34 |                                       |            |                   | A6000+      |       | RNAV 1                      |         |
| TF              | WW681      | no      | N481741.38<br>E0161319.97 | 151°<br>(156.3°)                      | 12.2       |                   | A5000+      |       | RNAV 1                      |         |
| TF              | WW679      | no      | N481917.45<br>E0162147.40 | 069°<br>(074.1°)                      | 5.9        | left              | A5000+      |       | RNAV 1                      |         |
| TF              | WW677      | no      | N482503.52<br>E0161919.46 | 339°<br>(344.1°)                      | 6.0        | left              | A5000+      | K230- | RNAV 1                      |         |
| TF              | WW675      | no      | N482951.86<br>E0161715.76 | 339°<br>(344.1°)                      | 5.0        |                   | A5000+      |       | RNAV 1                      |         |
| TF              | WW673      | no      | N483113.99<br>E0162429.77 | 069°<br>(074.1°)                      | 5.0        | right             | A5000+      |       | RNAV 1                      |         |
| TF              | WW672      | no      | N482625.53<br>E0162632.83 | 159°<br>(164.2°)                      | 5.0        | right             | A5000+      |       | RNAV 1                      |         |
| TF              | WW671      | no      | N482215.23<br>E0162816.89 | 159°<br>(164.5°)                      | 4.3        |                   | A5000+      |       | RNAV 1                      |         |

| Designator                                    | Route   | Remarks |
|---|---|---------|
| <b>PESAT 6 L</b><br>Pesat six lima transition | PESAT - WW684 - WW682 - WW680 - WW678 - WW676 - WW674 - WW673 - WW672 - WW671 |         |

**RNAV Transition Coding Table of PESAT 6 L**

| Path Terminator | Waypoint   |         |                           | Course/<br>Track<br>° MAG<br>(° True) | DIST<br>NM | Turn<br>Direction | Constraints |       | Navigation<br>Specification | Remarks |
|-----------------|------------|---------|---------------------------|---------------------------------------|------------|-------------------|-------------|-------|-----------------------------|---------|
|                 | Identifier | Flyover | Coordinates               |                                       |            |                   | Level       | Speed |                             |         |
| IF              | PESAT      | no      | N474253.75<br>E0170311.37 |                                       |            |                   | A6000+      |       | RNAV 1                      |         |
| TF              | WW684      | no      | N480001.58<br>E0165007.89 | 328°<br>(332.9°)                      | 19.3       |                   | A5000+      |       | RNAV 1                      |         |
| TF              | WW682      | no      | N480641.40<br>E0164500.42 | 328°<br>(332.8°)                      | 7.5        |                   | A5000+      |       | RNAV 1                      |         |
| TF              | WW680      | no      | N481321.01<br>E0163951.68 | 328°<br>(332.7°)                      | 7.5        |                   | A5000+      |       | RNAV 1                      |         |
| TF              | WW678      | no      | N482141.30<br>E0163621.20 | 339°<br>(344.3°)                      | 8.7        | right             | A5000+      |       | RNAV 1                      |         |
| TF              | WW676      | no      | N482746.61<br>E0163346.76 | 339°<br>(344.3°)                      | 6.3        |                   | A5000+      | K230- | RNAV 1                      |         |
| TF              | WW674      | no      | N483235.64<br>E0163144.11 | 339°<br>(344.3°)                      | 5.0        |                   | A5000+      |       | RNAV 1                      |         |
| TF              | WW673      | no      | N483113.99<br>E0162429.77 | 249°<br>(254.2°)                      | 5.0        | left              | A5000+      |       | RNAV 1                      |         |
| TF              | WW672      | no      | N482625.53<br>E0162632.83 | 159°<br>(164.2°)                      | 5.0        | left              | A5000+      |       | RNAV 1                      |         |
| TF              | WW671      | no      | N482215.23<br>E0162816.89 | 159°<br>(164.5°)                      | 4.3        |                   | A5000+      |       | RNAV 1                      |         |

**RNAV Holding**

| Holding Point | Inbound Track<br>° True | Inbound Track<br>° MAG | Turn Direction | MAX IAS | Minimum Holding Altitude<br>FT MSL / FL | Time  | DIST<br>NM | Remarks |
|---------------|-------------------------|------------------------|----------------|---------|---|-------|------------|---------|
| BALAD         | 038.6°                  | 034°                   | right          |         | A8000                                   | 1 MIN |            |         |
| MABOD         | 167.7°                  | 163°                   | right          |         | A6000                                   | 1 MIN |            |         |
| NERDU         | 107.6°                  | 103°                   | right          |         | A6000                                   | 1 MIN |            |         |
| PESAT         | 273.9°                  | 269°                   | left           |         | A6000                                   | 1 MIN |            |         |