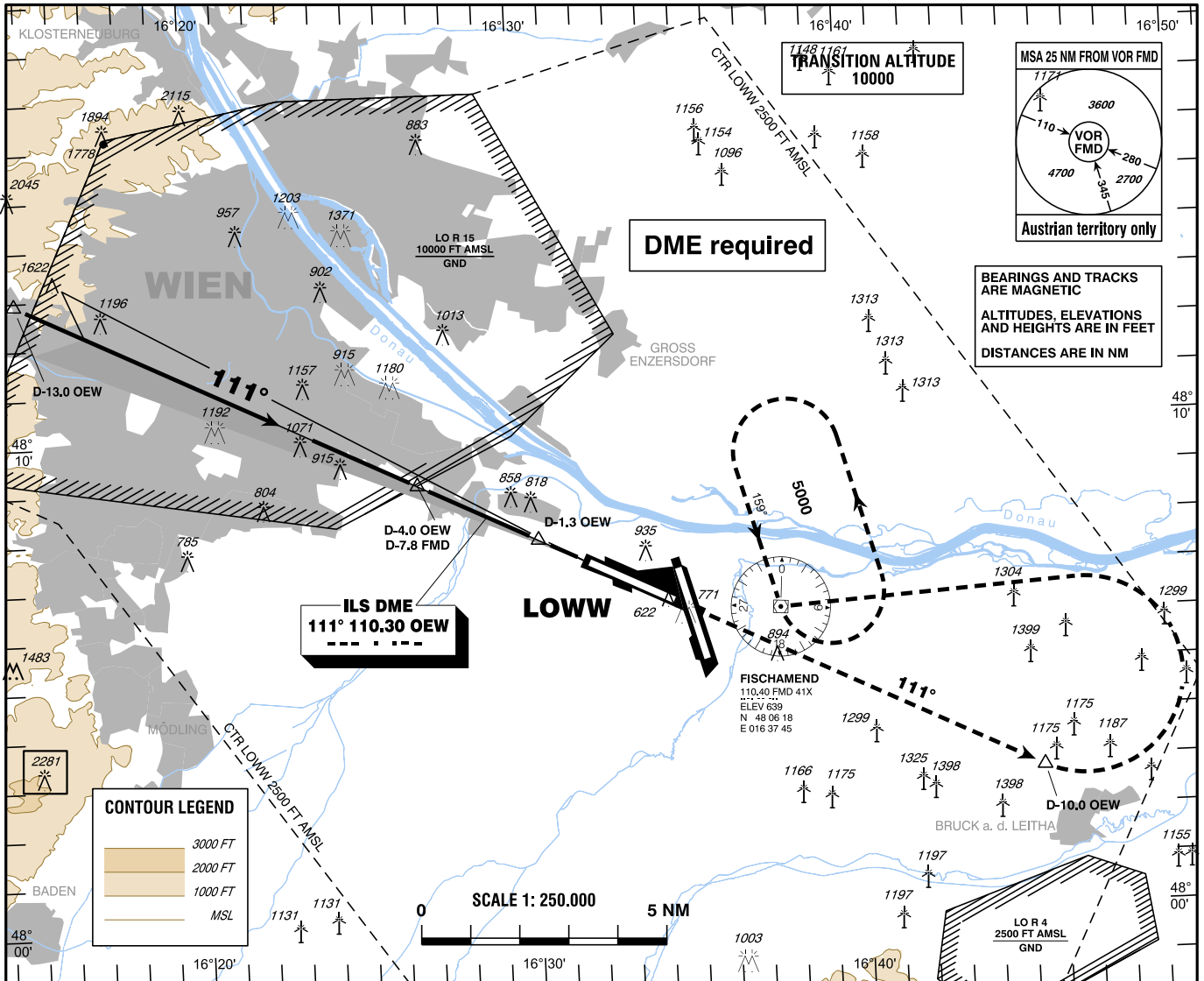


INSTRUMENT APPROACH CHART - ICAO

AD ELEV 600 FT
THR 11 ELEV 575 FT
HGT RELATED TO THR ELEV

| | | | | | |
|---------------|---------|---------|---------|---------|---------|
| RADAR | 118.775 | 125.175 | 129.050 | 134.675 | 136.250 |
| ARRIVAL TOWER | 119.800 | 134.125 | | | |
| GROUND | 119.400 | 123.800 | 124.475 | | |
| ATIS | 121.600 | 121.775 | | | |

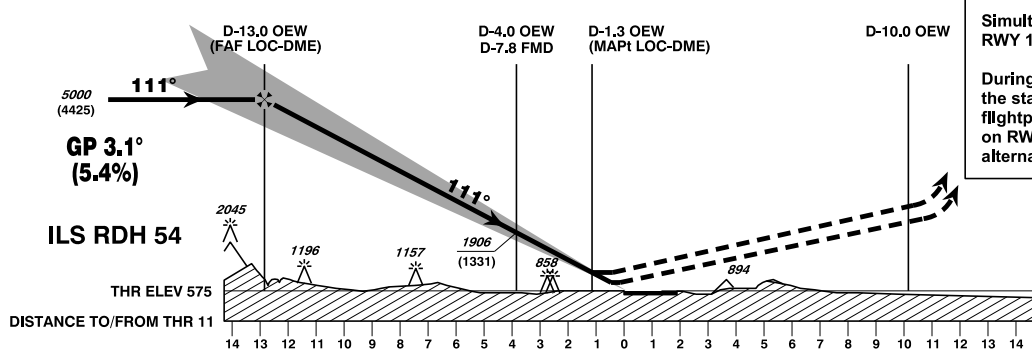
WIEN-SCHWECHAT (LOWW)
ÖSTERREICH AUSTRIA
ILS or LOC RWY 11



CHANGE: OBSTACLES; EDITORIAL

CONTOUR LEGEND

| | |
|--|---------|
| | 3000 FT |
| | 2000 FT |
| | 1000 FT |
| | MSL |



Simultaneous approaches on RWY 16 may be executed!

During simultaneous approaches the standard missed approach flightpath will conflict with traffic on RWY 16. If required expect alternate ATC instructions.

MISSED APPROACH: CLIMB STRAIGHT AHEAD, AT D-10.0 OEW TURN LEFT TO FMD; CLIMB TO 5000 FT AMSL AND HOLD. INFORM ATC IMMEDIATELY!

| OCA (OCH) IN FT | | A | B | C | D / D _L |
|----------------------|------------------------|--------------|--------------|--------------|--------------------|
| STRAIGHT-IN APPROACH | CAT I Press. Altim. | 719 (144) | 731 (156) | 739 (164) | 750 (175) |
| | LOC-DME | 1200 (630) | | | |

D-13.0 OEW to THR 11 - DISTANCE 12.8 NM
(Timing not authorized for defining the MAPt)

| GS (KT) | 80 | 100 | 120 | 140 | 160 | 180 |
|------------------------|-----------|------|------|------|------|------|
| D-13.0 OEW - THR 11 | MIN : SEC | 9:36 | 7:41 | 6:24 | 5:29 | 4:48 |
| Rate of descent (5.4%) | FT / MIN | 440 | 550 | 660 | 770 | 870 |

| DME OEW | 12 | 11 | 10 | 9 | 8 | 7 | 6 | 5 | 4 | 3 | 2 |
|--------------|-------------|-------------|-------------|-------------|-------------|-------------|-------------|-------------|-------------|------------|------------|
| DIST THR | 11.8 | 10.8 | 9.8 | 8.8 | 7.8 | 6.8 | 5.8 | 4.8 | 3.8 | 2.8 | 1.8 |
| ALT (HEIGHT) | 4650 (4075) | 4300 (3725) | 3950 (3375) | 3610 (3035) | 3260 (2685) | 2920 (2345) | 2580 (2005) | 2240 (1665) | 1900 (1325) | 1570 (995) | 1240 (665) |