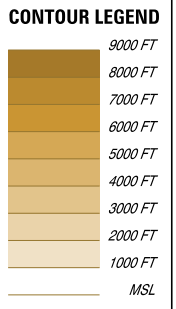
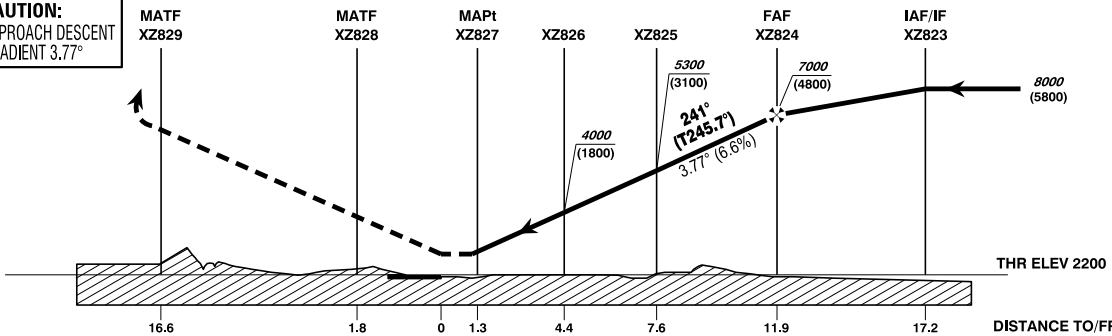


**Contrary to regulation stated in Doc 8168 Vol. II I-2-1-3  
MOC in mountainous terrain is not increased.**

CHANGE: EDITORIAL

**CAUTION:  
APPROACH DESCENT  
GRADIENT 3.77°**



**MISSED APPROACH: CLIMB ON RNAV MISSED APPROACH TRACK TO INLOX AND HOLD;**

OCA (OCH) IN FT	MA CLIMB GRADIENT	A	B	C
LNAV	2.5%	5290		
	5.0%	3000		

XZ824 to XZ827 - DISTANCE 10.6 NM (Timing not authorized for defining the MAPt)							
GS (KT)	80	100	120	140	160	180	
XZ824 - XZ827 MIN : SEC	7:57	6:22	5:18	4:33	3:59	3:32	
Rate of descent (6.6%) FT / MIN	530	670	800	930	1070	1200	

DIST In NM to XZ827	10	9	8	7	6	5	4	3	2	1
ALTITUDE (HEIGHT)	6760 (4560)	6360 (4160)	5960 (3760)	5560 (3360)	5160 (2960)	4760 (2560)	4360 (2160)	3960 (1760)	3560 (1360)	3160 (960)

Instrument Approach Procedure Coding Table Zeltweg RNP RWY 26L											
Path Terminator	Waypoint				Course/ Track ° MAG (° True)	DIST NM	Turn Direction	Constraints		Navigation Specification	Remarks
	Identifier	Type	Flyover	Coordinates				Level	Speed		
IF	XZ821	IAF	no	N472332.32 E0150533.02				A8000+		RNP APCH	
IF	XZ822	IAF	no	N471425.79 E0151136.02				A8000+		RNP APCH	
IF / TF	XZ823	IAF	no	N471859.06 E0150834.66	151° (155.7°)	5.0	right	A8000+	K210-	RNP APCH	
					331° (335.7°)	5.0	left				
TF	XZ824	FAF	no	N471648.40 E0150129.36	241° (245.7°)	5.3		A7000+		RNP APCH	
TF	XZ825		no	N471503.62 E0145548.43	241° (245.7°)	4.3		A5300+		RNP APCH	
TF	XZ826		no	N471343.49 E0145127.85	241° (245.7°)	3.3		A4000+		RNP APCH	
TF	XZ827	MAPt	yes	N471227.71 E0144721.49	241° (245.7°)	3.1				RNP APCH	
TF	XZ828	MATF	yes	N471113.64 E0144320.94	241° (245.7°)	3.0				RNP APCH	
TF	XZ829	MATF	yes	N471006.47 E0142137.25	261° (265.6°)	14.9	right	A8000+		RNP APCH	
DF	INLOX	MAHF	yes	N471151.95 E0144521.40			right	A9000+		RNP APCH	
<b>RNAV Holding</b>											
Holding Point	Inbound Track ° True	Inbound Track ° MAG	Turn Direction	MAX IAS	Minimum Holding Altitude FT MSL / FL	Time	DIST NM	Remarks			
INLOX	065.3°	061°	right		A9000	1 MIN					