

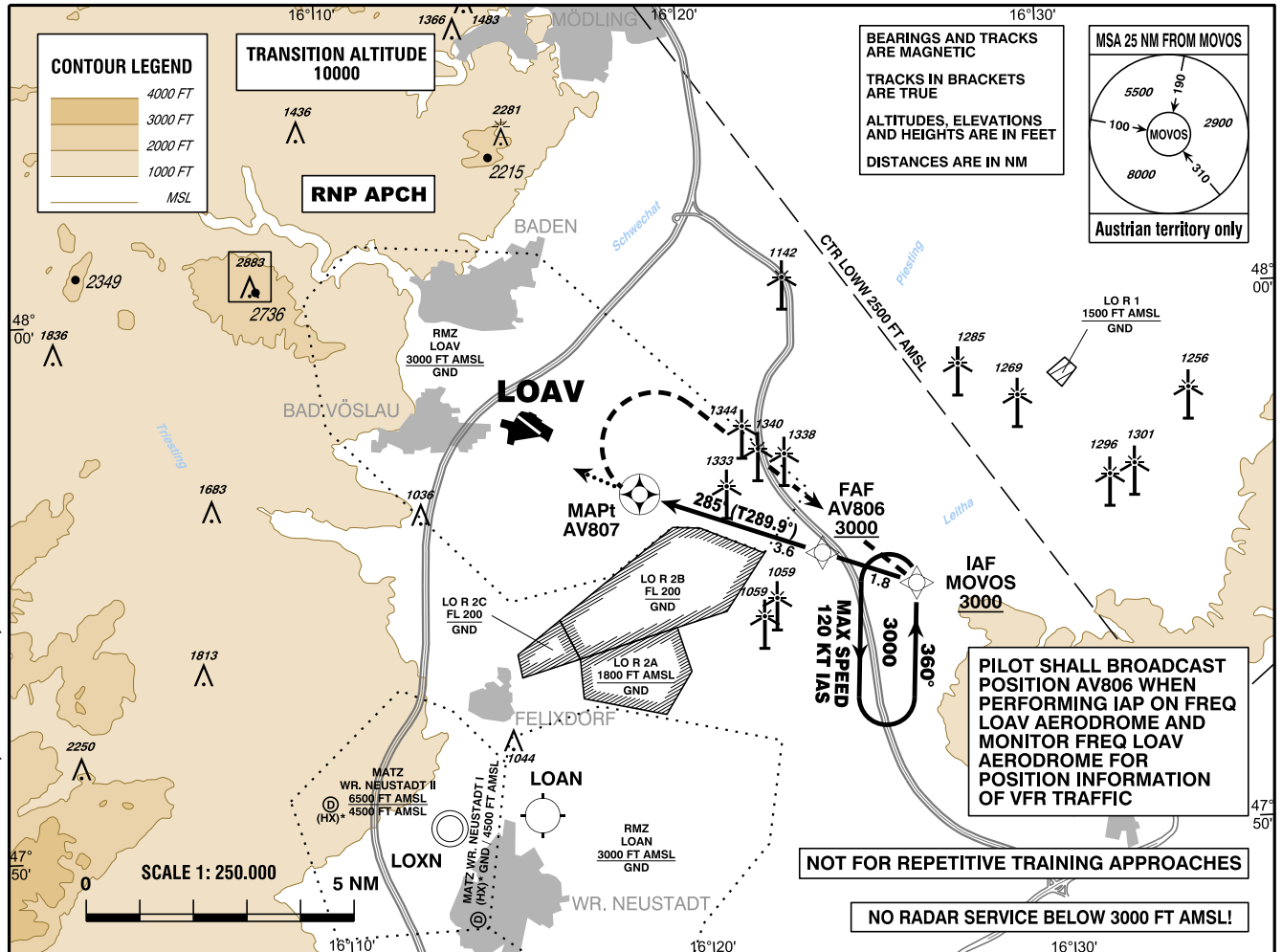
INSTRUMENT APPROACH CHART - ICAO

VAR 5° E

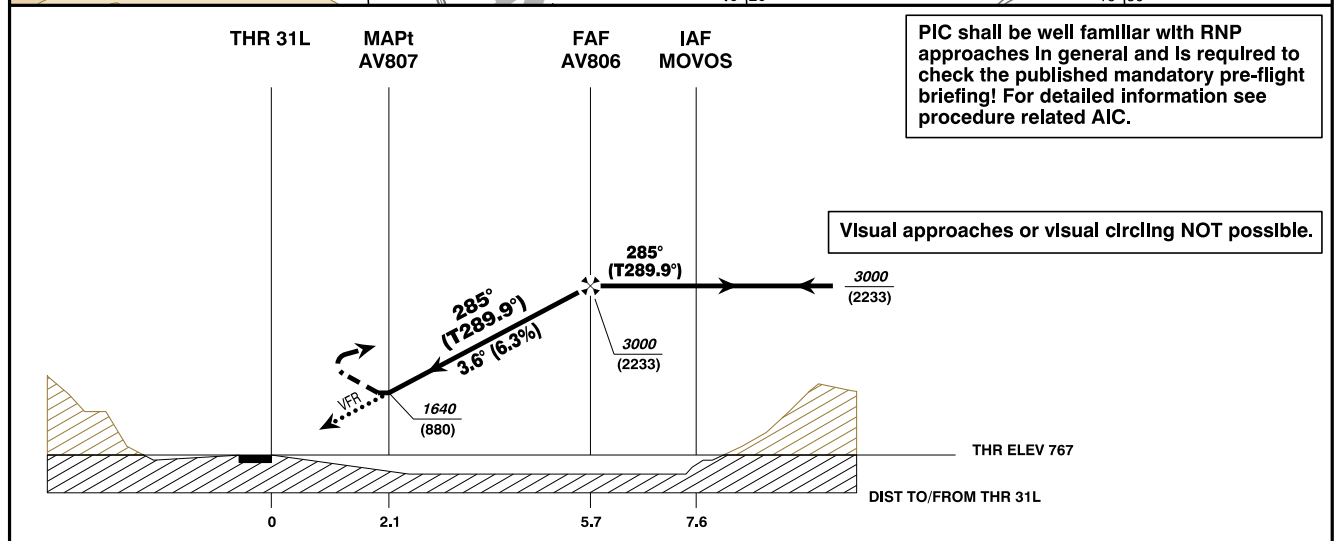
AD ELEV 767 FT
 THR 13R ELEV 761 FT
 THR 31L ELEV 767 FT
 HGT RELATED TO AD ELEV

| | |
|------------------|---------|
| WIEN RADAR | 133.685 |
| WIEN INFORMATION | 118.525 |
| VÖSLAU RADIO | 118.605 |

VÖSLAU
 ÖSTERREICH AUSTRIA
 RNP A
 CAT A / B



CHANGE: CALL SIGN; OBSTACLES; EDITORIAL



MISSED APPROACH: AT AV807 TURN RIGHT DIRECT TO MOVOS; CLIMB TO 3000 FT AMSL AND HOLD.

NOTE: MISSED APPROACH SPEED IS LIMITED TO MAX IAS 120 KT !

| MDA (MDH) IN FT | A | B | GNH LOWW required | AV806 to AV807 - DISTANCE 3.6 NM | | | | | |
|--|------------|---|-------------------|----------------------------------|-----------|-------------|-------------|------|------|
| | | | | GS (KT) | 80 | 100 | 120 | 140 | |
| LNAV | 1640 (880) | | | AV806 - AV807 | MIN : SEC | 2:41 | 2:09 | 1:48 | 1:32 |
| | | | | Rate of descent (6.3%) | FT / MIN | 510 | 630 | 760 | 890 |
| VFR-PART: SEE CHART FOR VFR-FLIGHTS (LOAV AD 2 MAP 14-2) | | | | DIST In NM to AV807 | | 3 | 2 | | |
| | | | | ALT (HEIGHT) | | 2780 (2013) | 2400 (1633) | | |

| Instrument Approach Procedure Coding Table Vöslau RNP A | | | | | | | | | | | |
|--|-------------------------|------------------------|----------------|---------------------------|---|------------|-------------------|-------------|-------|-----------------------------|---------|
| Path Terminator | Waypoint | | | | Course/ Track ° MAG (° True) | DIST NM | Turn Direction | Constraints | | Navigation Specification | Remarks |
| | Identifier | Type | Flyover | Coordinates | | | | Level | Speed | | |
| IF | MOVOS | IAF | no | N475440.60 E0162614.08 | | | | A3000+ | | RNP APCH | |
| TF | AV806 | FAF | no | N475518.25 E0162339.30 | 285° (289.9°) | 1.8 | | A3000+ | | RNP APCH | |
| TF | AV807 | MAPt | yes | N475631.21 E0161838.45 | 285° (289.9°) | 3.6 | | | | RNP APCH | |
| DF | MOVOS | MAHF | yes | N475440.60 E0162614.08 | | | right | A3000+ | K120- | RNP APCH | |
| RNAV Holding | | | | | | | | | | | |
| Holding Point | Inbound Track ° True | Inbound Track ° MAG | Turn Direction | MAX IAS | Minimum Holding Altitude FT MSL / FL | Time | DIST NM | Remarks | | | |
| MOVOS | 003.6° | 360° | left | K120- | A3000 | 1 MIN | | | | | |
| THR Coordinates | | | | | | | | | | | |
| RWY 13R | N475802.51 E0161521.87 | | | | | | | | | | |
| RWY 31L | N475742.77 E0161556.97 | | | | | | | | | | |