

**INSTRUMENT
APPROACH CHART - ICAO**

VAR 4° E

AD ELEV 2470 FT
THR 07 ELEV 2471 FT
THR 25 ELEV 2469 FT
HGT RELATED TO AD ELEV

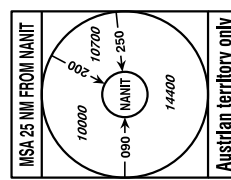
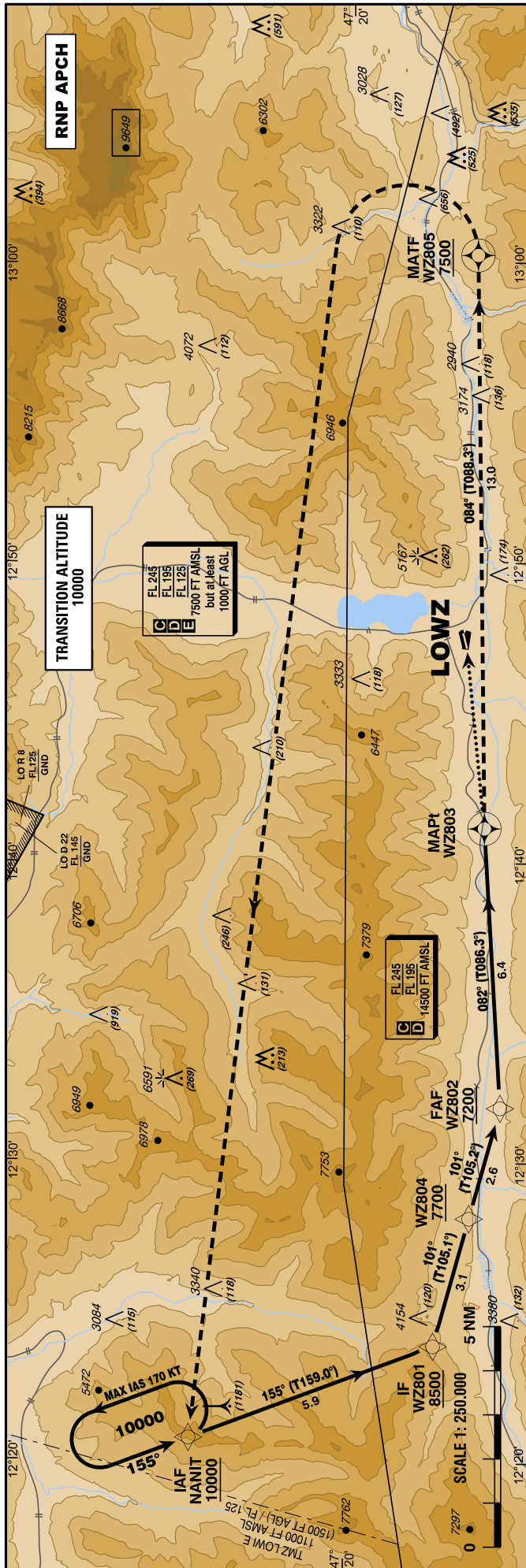
INNSBRUCK RADAR 128.975
ZELL AM SEE RADIO 119.705

ZELL AM SEE (LOWZ)

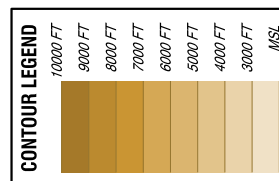
ÖSTERREICH AUSTRIA

RNP A

CAT A / B



BEARINGS AND TRACKS
ARE MAGNETIC
TRACKS IN BRACKETS
ARE TRUE
ALTITUDES, ELEVATIONS
AND HEIGHTS ARE IN FT
DISTANCES ARE IN NM

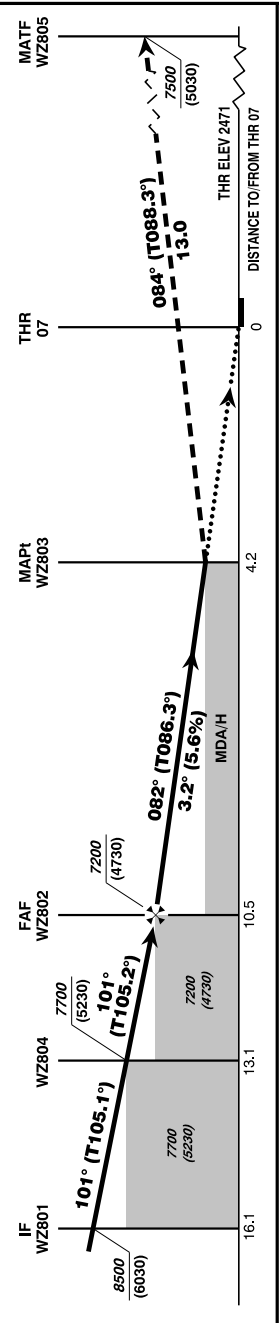


PIC shall be well familiar with RNP procedures in general and is required to check the published mandatory pre-flight briefing! For detailed information see procedure related AIC.

PIC shall be well familiar with the terrain in the area of "Zell am See".

Visual approaches or visual circling NOT possible.

Approach shall be executed under own navigation after the IAF
- NO RADAR SERVICE below 10.000 FT AMSL



MISSED APPROACH: CLIMB TO 7500 FT AMSL ON TRACK 084° TO WZ805, THEN TURN LEFT DIRECT TO NANIT; CONTINUE CLIMB TO 10000 FT AMSL AND HOLD.

WZ802 to WZ803 - DISTANCE 6.4 NM <small>(Timing not authorized for defining the MAP1)</small>		WZ802 to WZ805 - DISTANCE 6.4 NM <small>(Timing not authorized for defining the MAP1)</small>			
GS (KT)	80	100	120	140	
WZ802 - WZ803	4:46	3:49	3:11	2:43	
Rate of descent (5.6%)	FT / MIN	450	570	680	790
DIST In NM to WZ803	6	5	4	3	2
ALT (HEIGHT)	7080 (4610)	6740 (4270)	6400 (3930)	6060 (3590)	5720 (3250)

MDA (MDH) IN FT	MA Climb Gradient	A	B	QNH LOWI required
LNAV	2.5%	5680 (3210)		
	5.0%	5230 (2760)		
	7.0%	5040 (2570)		

VFR-PART: SEE CHART FOR VFR-FLIGHTS (LOWZ AD 2 MAP 14-2)

CHANGE: RWY DESIGNATOR; EDITORIAL

Instrument Approach Procedure Coding Table Zell am See RNP A											
Path Terminator	Waypoint				Course/ Track ° MAG (° True)	DIST NM	Turn Direction	Constraints		Navigation Specification	Remarks
	Identifier	Type	Flyover	Coordinates				Level	Speed		
IF	NANIT	IAF	no	N472334.87 E0122047.17				A10000+		RNP APCH	
TF	WZ801	IF	no	N471804.22 E0122353.31	155° (159.0°)	5.9		A8500+		RNP APCH	
TF	WZ804		no	N471716.47 E0122812.95	101° (105.1°)	3.1	left	A7700+		RNP APCH	
TF	WZ802	FAF	no	N471636.30 E0123150.53	101° (105.2°)	2.6		A7200+		RNP APCH	
TF	WZ803	MAPt	yes	N471700.84 E0124109.49	082° (086.3°)	6.4	left			RNP APCH	
TF	WZ805	MATF	yes	N471721.85 E0130011.10	084° (088.3°)	13.0	right	A7500+		RNP APCH	
DF	NANIT	MAHF	yes	N472334.87 E0122047.17			left	A10000+		RNP APCH	
HM	NANIT	MAHF	yes	N472334.87 E0122047.17	155° (159.0°)		left	A10000+	K170-	RNP APCH	
RNAV Holding											
Holding Point	Inbound Track ° True	Inbound Track ° MAG	Turn Direction	MAX IAS	Minimum Holding Altitude FT MSL / FL	Time	DIST NM	Remarks			
NANIT	159.0°	155°	left	K170-	10000 FT MSL	1 MIN					
THR Coordinates											
RWY 07	N471727.48 E0124714.94										
RWY 25	N471731.72 E0124739.69										