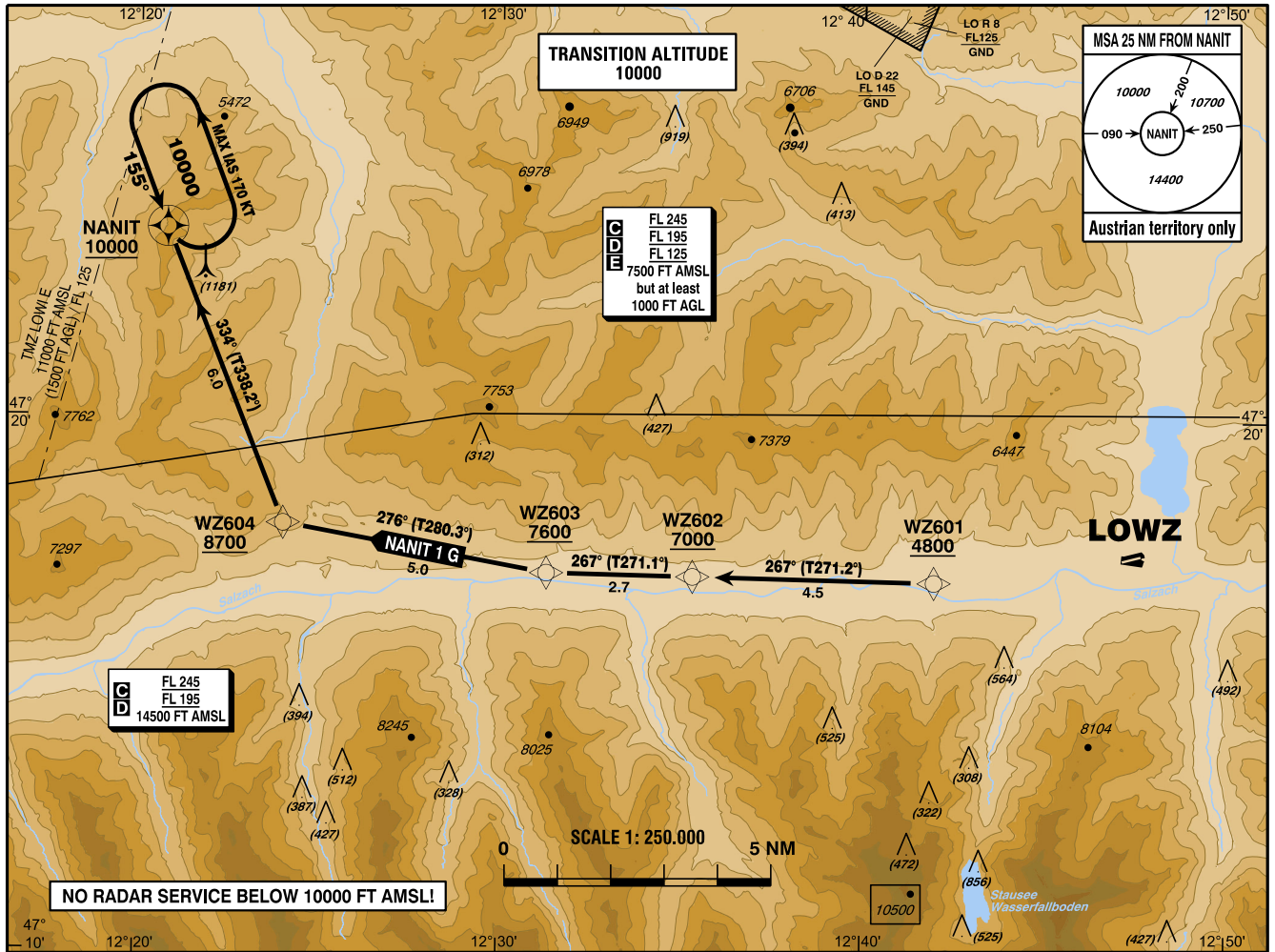


**STANDARD DEPARTURE  
CHART - INSTRUMENT  
(SID) - ICAO**

VAR 4° E

INNSBRUCK RADAR 128.975  
ZELL AM SEE RADIO 119.705

**ZELL AM SEE (LOWZ)**  
ÖSTERREICH AUSTRIA



CHANGE: EDITORIAL

**RNAV 1  
GNSS required**

**Departing from LOWZ only allowed as VFR flight,  
IFR starts, when passing WZ601, established on track to  
WZ602 and passing 4800 FT AMSL**

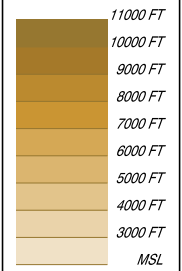
**IFR procedure is within airspace class G until 2 NM north  
of WZ604**

**Operating as IFR flight along SID subject to ATC clearance**

**Obtain further ATC-Route clearance on FREQ 128.975**

**Flights shall contact INNSBRUCK RADAR FREQ 128.975  
when passing 7000 FT AMSL**

**CONTOUR LEGEND**



**BEARINGS AND TRACKS  
ARE MAGNETIC**

**TRACKS IN BRACKETS  
ARE TRUE**

**ALTITUDES, ELEVATIONS  
AND HEIGHTS ARE IN FEET**

**DISTANCES ARE IN NM**

Designator	Route	After Take-Off		Remarks
		Climb to ..initially	Expect FREQ	
<b>NANIT 1 G</b> Nanit one Golf departure	WZ601 - WZ602 - WZ603 - WZ604 - NANIT	By ATC	INNSBRUCK RADAR 128.975	Climb gradient at least 8.0% (490 FT/NM) until WZ602, thereafter 3.6% (220 FT/NM).
Contact INNSBRUCK RADAR when passing 7000 FT AMSL				

**RNAV SID Coding Table of NANIT 1 G**

Path Terminator	Waypoint			Course/ Track ° MAG (° True)	DIST NM	Turn Direction	Constraints		Navigation Specification	Remarks
	Identifier	Flyover	Coordinates				Level	Speed		
IF	WZ601		N471700.56 E0124158.57				A4800+		RNAV 1	
TF	WZ602	no	N471706.12 E0123519.70	267° (271.2°)	4.5		A7000+		RNAV 1	
TF	WZ603	no	N471709.30 E0123118.09	267° (271.1°)	2.7		A7600+		RNAV 1	
TF	WZ604	no	N471803.14 E0122402.12	276° (280.3°)	5.0	right	A8700+	K165-	RNAV 1	
TF	NANIT	yes	N472334.87 E0122047.17	334° (338.2°)	6.0	right	A10000+	K165-	RNAV 1	

**RNAV Holding**

Holding Point	Inbound Track ° True	Inbound Track ° MAG	Turn Direction	MAX IAS	Minimum Holding Altitude FT MSL / FL	Time	DIST NM	Remarks
NANIT	159.0°	155°	left	K170-	10000 FT MSL	1 MIN		