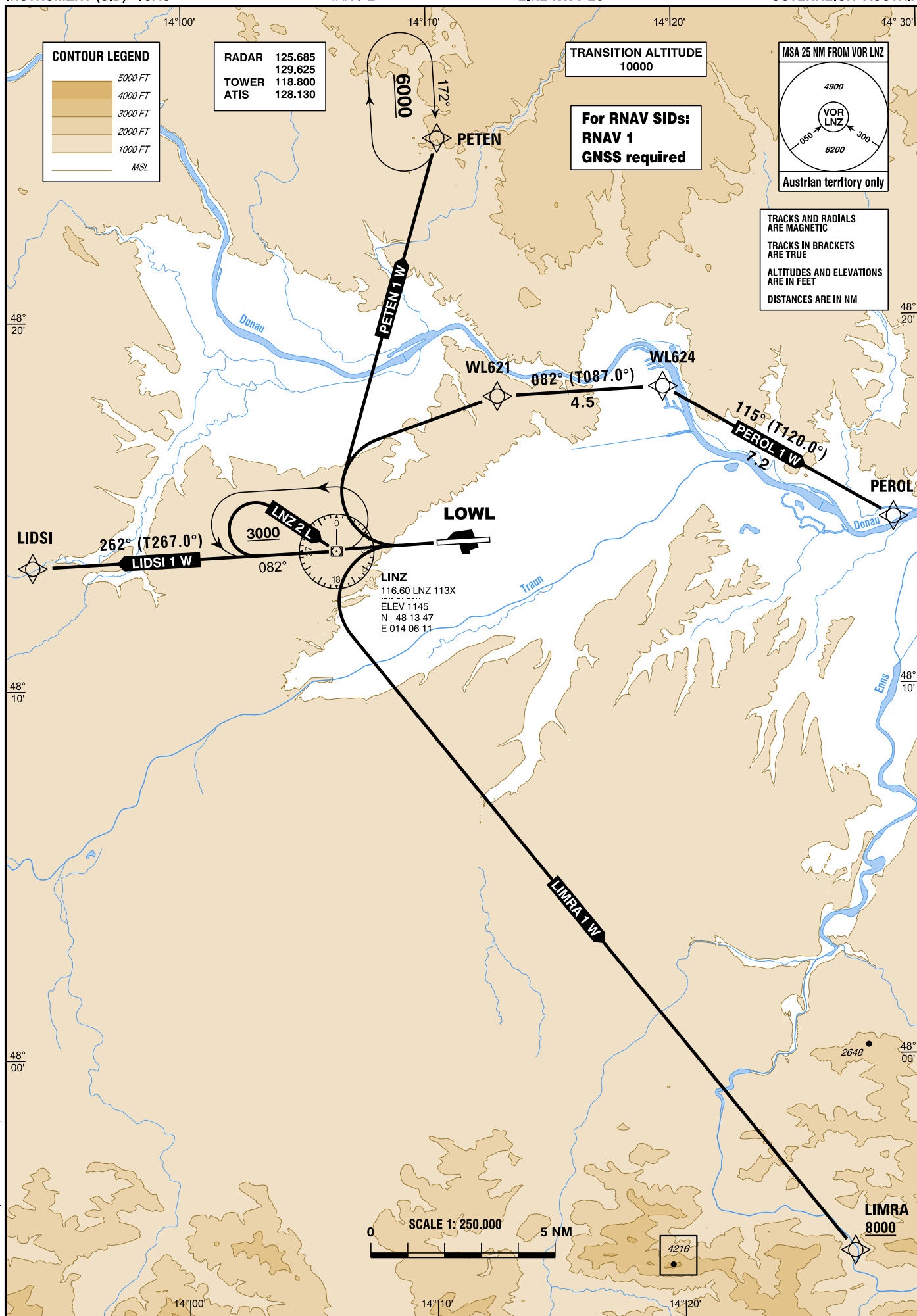


STANDARD DEPARTURE CHART -
INSTRUMENT (SID) - ICAO

VAR 5°E

LINZ RWY 26

L I N Z (LOWL)
ÖSTERREICH AUSTRIA



CHANGE: MAG. VAR.; MAG. TRACKS; EDITORIAL



Designator	Route	After Take-Off		Remarks						
		Climb to ..initially	Expect FREQ							
LIDSI 1 W Lidsi one whiskey departure	Climb on track 262° to LIDSI	6000 FT AMSL	LINZ RADAR 125.685 MHZ	Climb gradient at least 6.1% (375 FT/NM).						
Contact LINZ RADAR when advised by Tower										
Coding Table of LIDSI 1 W										
Path Terminator	Waypoint			Course/ Track ° MAG (° True)	DIST NM	Turn Direction	Constraints		Navigation Specification	Remarks
	Identifier	Flyover	Coordinates				Level FT	Speed KT		
CF	LIDSI	no	N481322.19 E0135350.30	262° (267.0°)					RNAV 1	

Designator	Route	After Take-Off		Remarks						
		Climb to ..initially	Expect FREQ							
LIMRA 1 W Limra one whiskey departure	Climb on track 262° to 3000 FT AMSL - LIMRA	8000 FT AMSL	LINZ RADAR 125.685 MHZ	Climb gradient at least 6.5% (395 FT/NM) until passing 2000 FT AMSL, thereafter 4.6% (280 FT/NM) until passing 7000 FT AMSL, thereafter 3.3% (205 FT/NM). When TRA WELS (Gliding area) is active, aircraft have to expect PEROL 1 W for departure!						
Contact LINZ RADAR when advised by Tower										
Coding Table of LIMRA 1 W										
Path Terminator	Waypoint			Course/ Track ° MAG (° True)	DIST NM	Turn Direction	Constraints		Navigation Specification	Remarks
	Identifier	Flyover	Coordinates				Level FT	Speed KT		
CA				262° (267.0°)			A3000	205-	RNAV 1	
DF	LIMRA	no	N475439.53 E0142652.02			left	A8000+		RNAV 1	

Designator	Route	After Take-Off		Remarks
		Climb to ..initially	Expect FREQ	
LNZ 2 L Linz two lima departure	Climb on track 262°, when passing 3000 FT AMSL, turn RIGHT inbound to VOR/DME LNZ and enter holding 3000 FT AMSL or above. Do not turn before passing VOR/DME LNZ	4000 FT AMSL	LINZ RADAR 125.685 MHZ	Only available for NON-RNAV equipped aircraft. Climb gradient up to 2000 FT AMSL at least 6.5% (395 FT/NM), thereafter 3.3% (205 FT/NM). During initial turn MAX IAS 205 KT.
Contact LINZ RADAR when advised by Tower				



Designator	Route	After Take-Off		Remarks
		Climb to ..initially	Expect FREQ	
PEROL 1 W Perol one whiskey departure	Climb on track 262° to 3000 FT AMSL - WL621 - WL624 - PEROL	6000 FT AMSL	LINZ RADAR 125.685 MHZ	Climb gradient at least 6.5% (395 FT/NM) until passing 2000 FT AMSL, thereafter 3.3% (205 FT/NM). On ATC discretion propeller driven aircraft can be instructed to turn direct WL621 when passing 2000 FT AMSL. During initial turn MAX IAS 120 KT.
Contact LINZ RADAR when advised by Tower				

Coding Table of PEROL 1 W

Path Terminator	Waypoint			Course/ Track ° MAG (° True)	DIST NM	Turn Direction	Constraints		Navigation Specification	Remarks
	Identifier	Flyover	Coordinates				Level FT	Speed KT		
CA				262° (267.0°)			A3000	205-	RNAV 1	
DF	WL621	no	N481756.97 E0141246.91			right			RNAV 1	
TF	WL624	no	N481810.78 E0141930.78	082° (087.0°)	4.5				RNAV 1	
TF	PEROL	no	N481434.69 E0142849.39	115° (120.0°)	7.2	right			RNAV 1	

Designator	Route	After Take-Off		Remarks
		Climb to ..initially	Expect FREQ	
PETEN 1 W Peten one whiskey departure	Climb on track 262° to 3000 FT AMSL - PETEN	6000 FT AMSL	LINZ RADAR 125.685 MHZ	Climb gradient at least 6.5% (395 FT/NM) until passing 2000 FT AMSL, thereafter 4.6% (280 FT/NM).
Contact LINZ RADAR when advised by Tower				

Coding Table of PETEN 1 W

Path Terminator	Waypoint			Course/ Track ° MAG (° True)	DIST NM	Turn Direction	Constraints		Navigation Specification	Remarks
	Identifier	Flyover	Coordinates				Level FT	Speed KT		
CA				262° (267.0°)			A3000	205-	RNAV 1	
DF	PETEN	no	N482458.49 E0141026.08			right			RNAV 1	

PBN Holding

Holding Point	Inbound Track ° True	Inbound Track ° MAG	Turn Direction	Speed KT	Minimum Holding Altitude FT AMSL / FL	Time	DIST NM	Remarks
LNZ	086.9°	082°	left		A3000	1 MIN		
PETEN	177.0°	172°	right		A6000	1 MIN		