

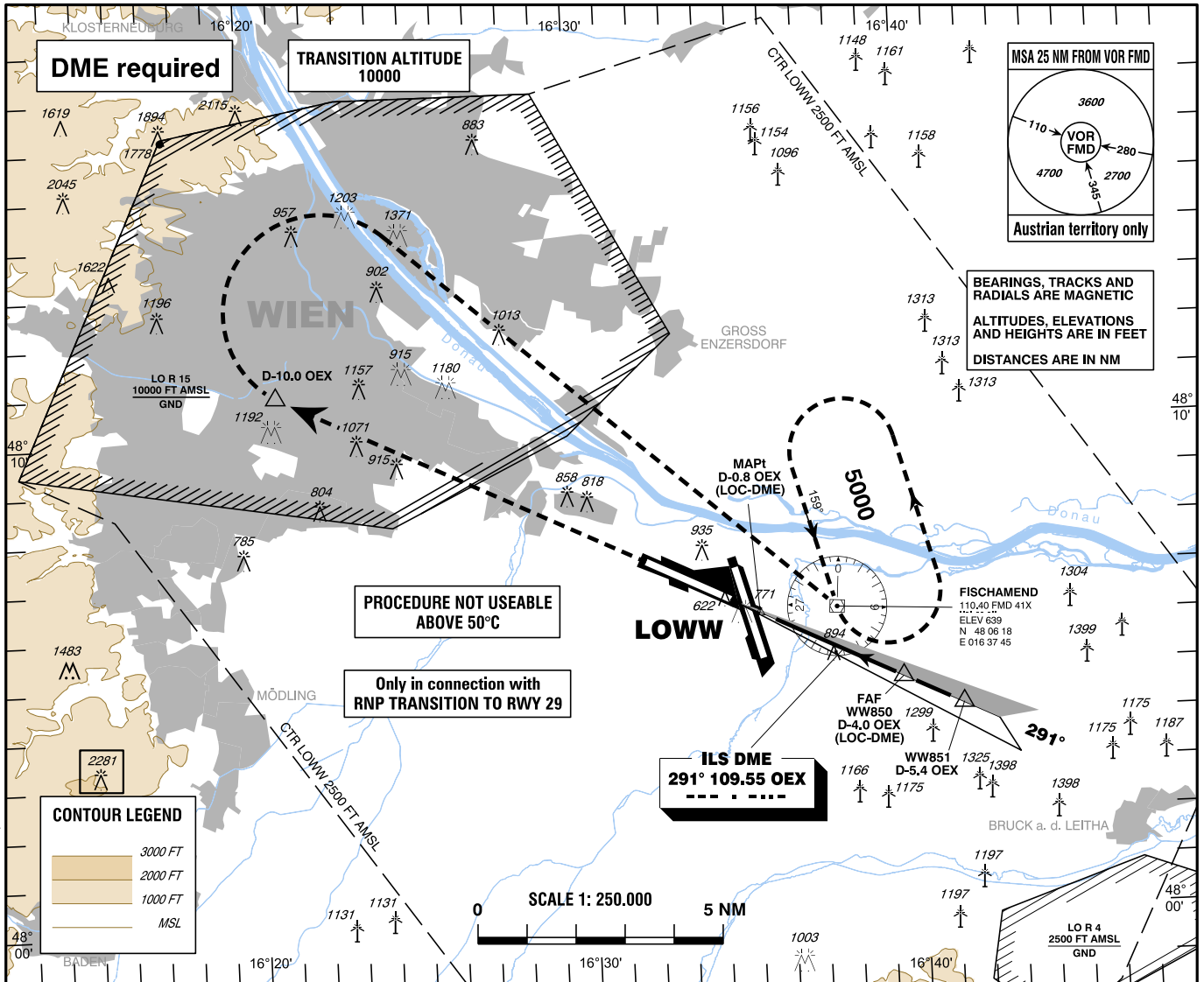
INSTRUMENT APPROACH CHART - ICAO

VAR 5° E

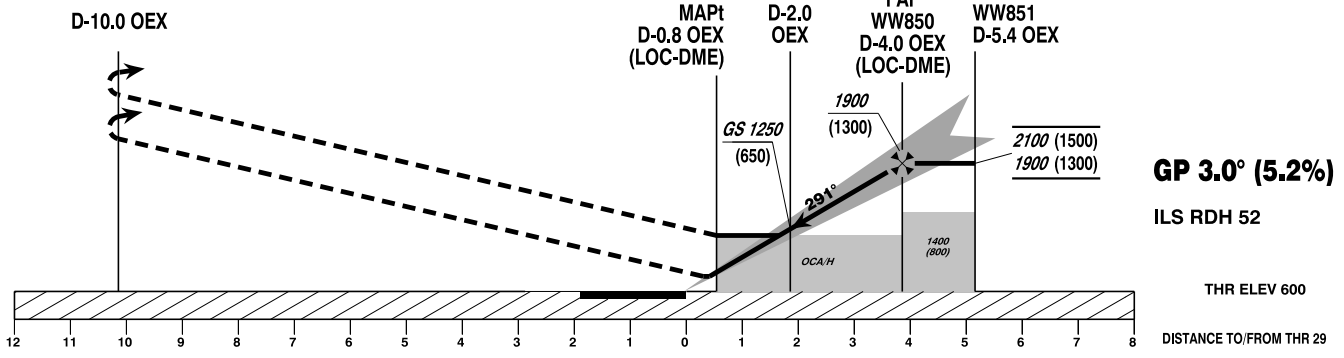
AD ELEV 600 FT
THR 29 ELEV 600 FT
HGT RELATED TO THR ELEV

RADAR 118.775 125.175 129.050 134.675 136.250
ARRIVAL 119.800 134.125
TOWER 119.400 123.800 124.475
GROUND 121.600 121.775
ATIS 122.955

WIEN-SCHWECHAT (LOWW)
ÖSTERREICH AUSTRIA
ILS U CAT II & III or LOC U RWY 29



CHANGE: OBSTACLES: EDITORIAL



MISSED APPROACH: CLIMB STRAIGHT AHEAD, AT D-10.0 OEX TURN RIGHT DIRECT TO FMD; CLIMB TO 5000 FT AMSL AND HOLD.

OCA (OCH) IN FT		A	B	C	D / D _L
STRAIGHT-IN APPROACH	CAT I Press. Altim.	749 (149)	761 (161)	773 (173)	783 (183)
	CAT II RDO Altim.	661 (61)	678 (78)	690 (90)	708 (108)
	CAT III	A P P R O V E D			
LOC-DME		1220 (620)			

D-4.0 OEX to THR 29 - DISTANCE 3.9 NM							
(Timing not authorized for defining the MAPt)							
	GS (KT)	80	100	120	140	160	180
D-4.0 OEX - THR 29	MIN : SEC	2:56	2:20	1:57	1:40	1:28	1:18
Rate of descent (5.2%)	FT / MIN	420	530	640	740	850	960

DME OEX	3	2	1
DIST THR	2.9	1.9	0.9
ALT (HEIGHT)	1560 (960)	1240 (640)	920 (320)