

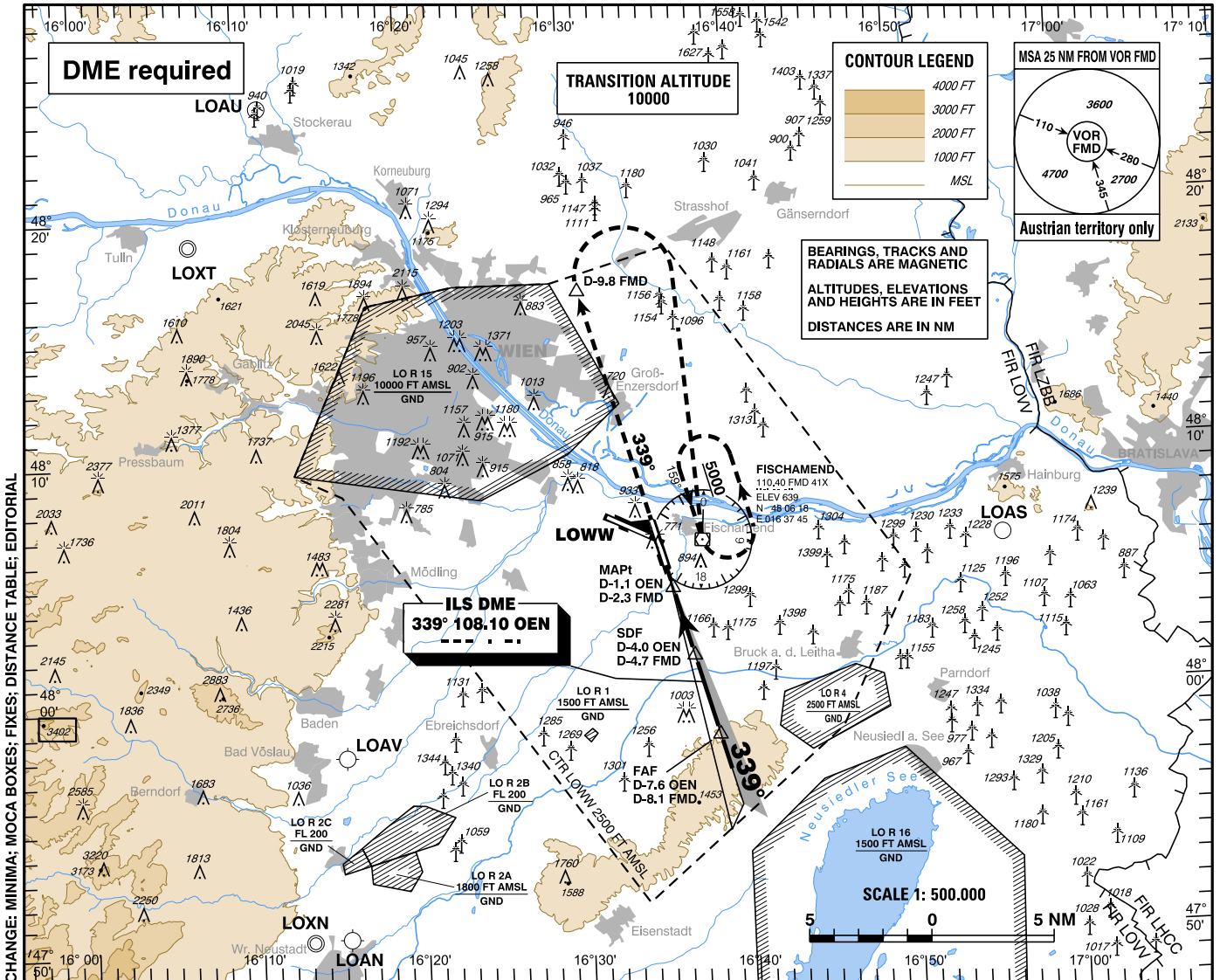
**INSTRUMENT APPROACH CHART - ICAO**

VAR 5° E

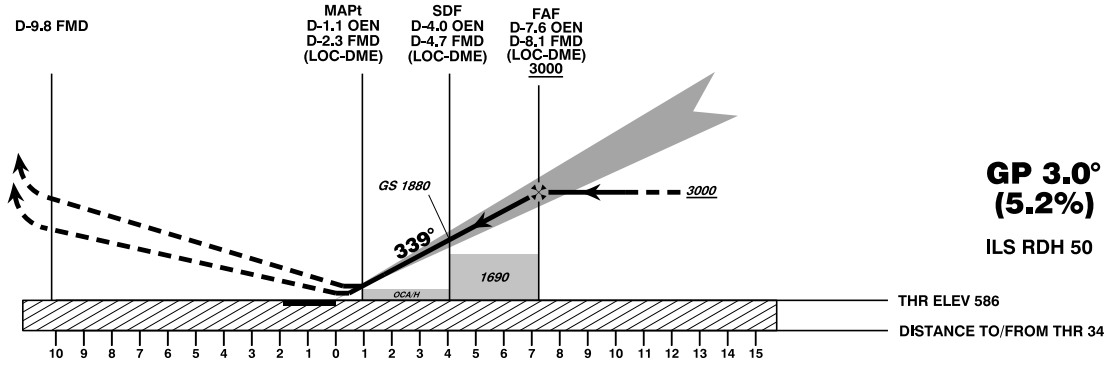
AD ELEV 600 FT  
THR 34 ELEV 586 FT  
HGT RELATED TO THR ELEV

RADAR	118.775	125.175	129.050	134.675	136.250
ARRIVAL	119.800	134.125			
TOWER	119.400	123.800	124.475		
GROUND	121.600	121.775			
ATIS	122.955				

**WIEN-SCHWECHAT (LOWW)**  
ÖSTERREICH AUSTRIA  
ILS or LOC RWY 34



CHANGE: MINIMA; MOCA BOXES; FIXES; DISTANCE TABLE; EDITORIAL



**MISSED APPROACH:** CLIMB STRAIGHT AHEAD, AT D-9.8 FMD TURN RIGHT TO VOR/DME FMD; CLIMB TO 5000 FT AMSL AND HOLD.

OCA (OCH) IN FT		A	B	C	D / D <sub>L</sub>
STRAIGHT-IN APPROACH	CAT I Press. Altm.	765 (179)	778 (192)	786 (200)	796 (210)
	LOC-DME	1150 (564)			

D-7.6 OEN to THR 34 - DISTANCE 7.4 NM							
(Timing not authorized for defining the MAPt)							
GS (KT)	80	100	120	140	160	180	
Rate of descent (5.2%)	FT / MIN	420	530	640	740	850	960

DME OEN	7	6	5	4	3	2
DIST THR	6.9	5.9	4.9	3.9	2.9	1.9
ALT (HEIGHT)	2820 (2234)	2500 (1914)	2180 (1594)	1860 (1274)	1540 (954)	1230 (644)