

**INSTRUMENT APPROACH CHART - ICAO**

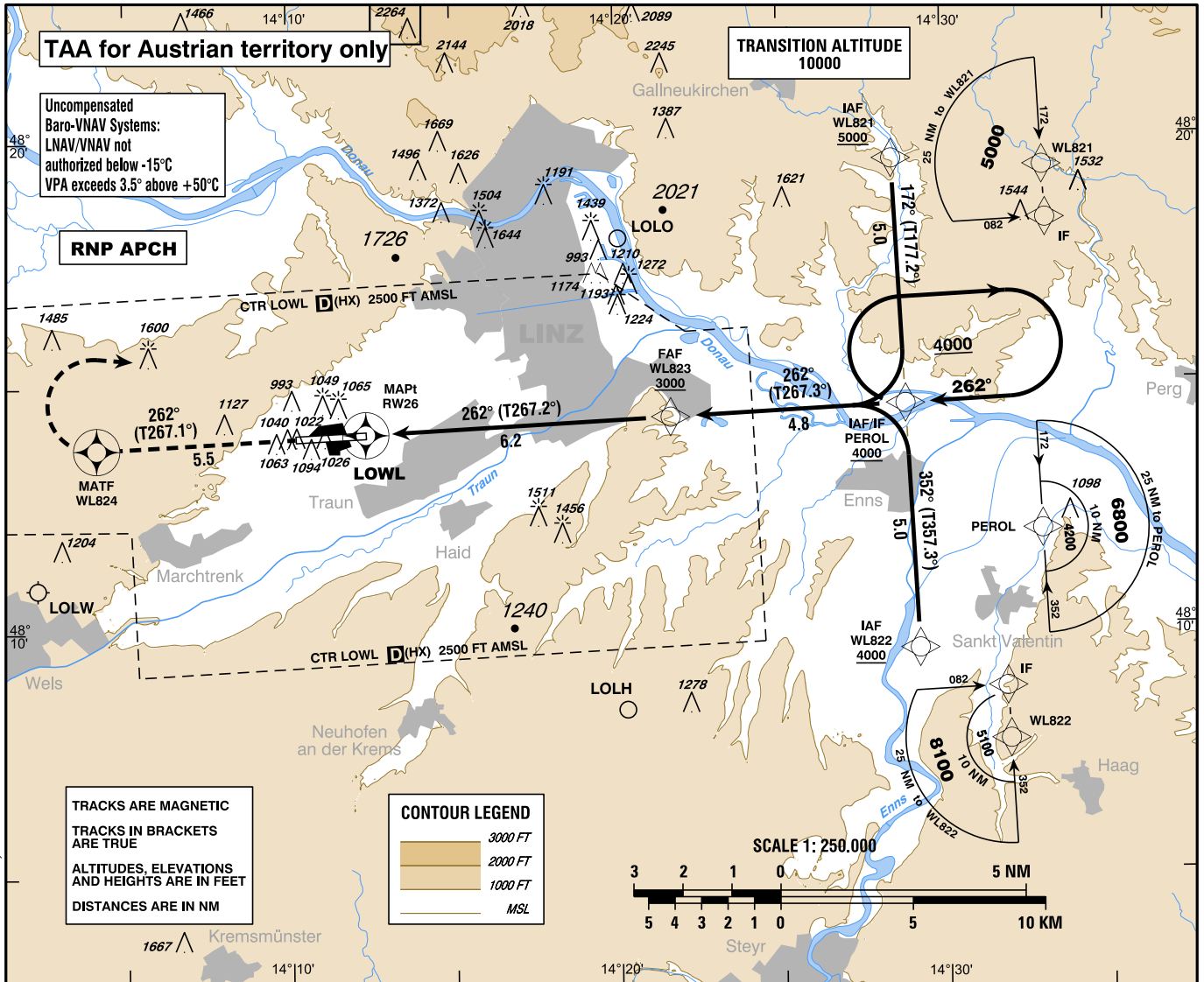
VAR 5° E

AD ELEV 980 FT  
THR 26 ELEV 963 FT  
HGT RELATED TO THR ELEV  
CIRCLING HGT RELATED TO AD ELEV

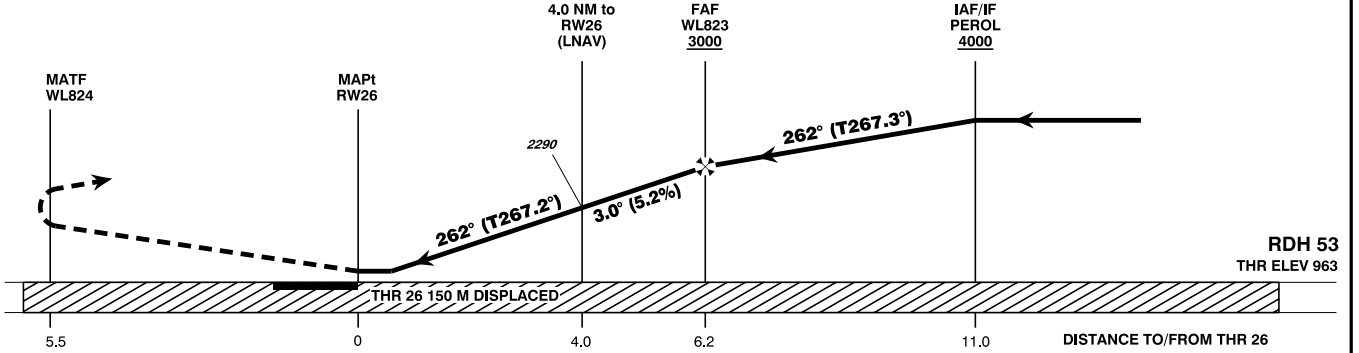
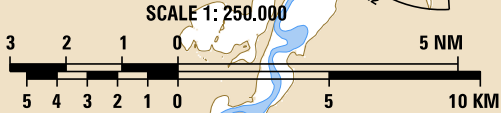
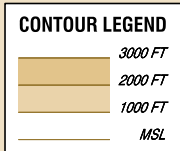
RADAR 125.685  
129.625  
TOWER 118.800  
ATIS 128.130

EGNOS  
CH 92404  
E26A

**L I N Z (LOWL)**  
ÖSTERREICH AUSTRIA  
RNP RWY 26



TRACKS ARE MAGNETIC  
TRACKS IN BRACKETS ARE TRUE  
ALTITUDES, ELEVATIONS AND HEIGHTS ARE IN FEET  
DISTANCES ARE IN NM



**MISSED APPROACH:** CLIMB STRAIGHT AHEAD TO WL824, THEN TURN RIGHT DIRECT TO PEROL; CLIMB TO 4000 FT AMSL AND HOLD.

OCA (OCH) IN FT	A	B	C	D / D <sub>L</sub>
LNAV	1300 (340)			
LNAV/VNAV	1166 (203)	1178 (215)	1220 (257)	1231 (268)
LPV	1141 (178)	1154 (191)	1162 (199)	1172 (209)
CIRCLING	1470 (490)	1550 (570)	1930 (950)	
CIRCLING NOT AUTHORIZED NORTH OF THE AD				

WL823 to RW26 - DISTANCE 6.2 NM (Timing not authorized for defining the MAPt)							
	GS (KT)	80	100	120	140	160	180
Rate of descent (5.2%)	FT / MIN	420	530	640	740	850	960

DIST in NM to RW26	6	5	4	3	2
ALTITUDE (HEIGHT)	2930 (1967)	2610 (1647)	2290 (1327)	1970 (1007)	1650 (687)

**Coding Table  
LOWL RNP RWY 26**

Path Terminator	Waypoint				Course/ Track ° MAG (° True)	DIST NM	Turn Direction	Constraints		Navigation Specification	Remarks
	Identifier	Type	Flyover	Coordinates				Level FT	Speed KT		
IF	WL821	IAF	no	N481934.21 E0142827.85				A5000+		RNP APCH	
IF	WL822	IAF	no	N480935.15 E0142910.85				A4000+		RNP APCH	
IF / TF	PEROL	IAF / IF	no	N481434.69 E0142849.39	172° (177.2°) 352° (357.3°)	5.0		A4000+		RNP APCH	
TF	WL823	FAF	no	N481420.68 E0142138.93	262° (267.3°)	4.8	right left	A3000+		RNP APCH	
TF	RW26	MAPt	yes	N481401.84 E0141220.32	262° (267.2°)	6.2				RNP APCH	VPA (°) / TCH (ft): -3.0 / 53
TF	WL824	MATF	yes	N481344.59 E0140407.23	262° (267.1°)	5.5				RNP APCH	
DF	PEROL	MAHF	yes	N481434.69 E0142849.39			right	A4000+		RNP APCH	
HM	PEROL	MAHF	yes	N481434.69 E0142849.39	262° (267.2°)		right	A4000+	230-	RNP APCH	Time: 1 MIN
<b>PBN Holding</b>											
Holding Point	Inbound Track ° True	Inbound Track ° MAG	Turn Direction	Speed KT	Minimum Holding Altitude FT AMSL / FL	Time	DIST NM	Remarks			
PEROL	267.2°	262°	right	230-	A4000	1 MIN					

SBAS FAS Data Block Coding Table Linz RNP RWY 26	
Input data	
Operation Type	0
SBAS Provider	1
Airport Identifier	LOWL
Runway	26
Runway Direction	0
Approach Performance Designator	0
Route Indicator	
Reference Path Data Selector	0
Reference Path Identifier	E26A
LTP/FTP Latitude	481401.8400N
LTP/FTP Longitude	0141220.2800E
LTP/FTP Ellipsoidal Height (metres)	338.5
FPAP Latitude	481357.2620N
Delta FPAP Latitude (seconds)	-4.5780
FPAP Longitude	0141007.8100E
Delta FPAP Longitude (seconds)	-132.4700
Threshold Crossing Height	53.0
TCH Units Selector	0
Glidepath Angle (degrees)	3.00
Course Width (metres)	107.00
Length Offset (metres)	144
HAL (metres)	40.0
VAL (metres)	35.0
Output data	
Data Block	10 0C 17 0F 0C 1A 00 00 01 36 32 05 E0 20 B3 14 70 AD 18 06 39 21 3C DC FF 14 F5 FB 12 02 2C 01 6C 12 C8 AF 01 53 A1 45
Calculated CRC Value	0153A145
Required Additional Data	
ICAO Code	LO
LTP/FTP Orthometric Height (metres)	293.5
FPAP Orthometric Height (metres)	293.5