

INSTRUMENT APPROACH CHART - ICAO

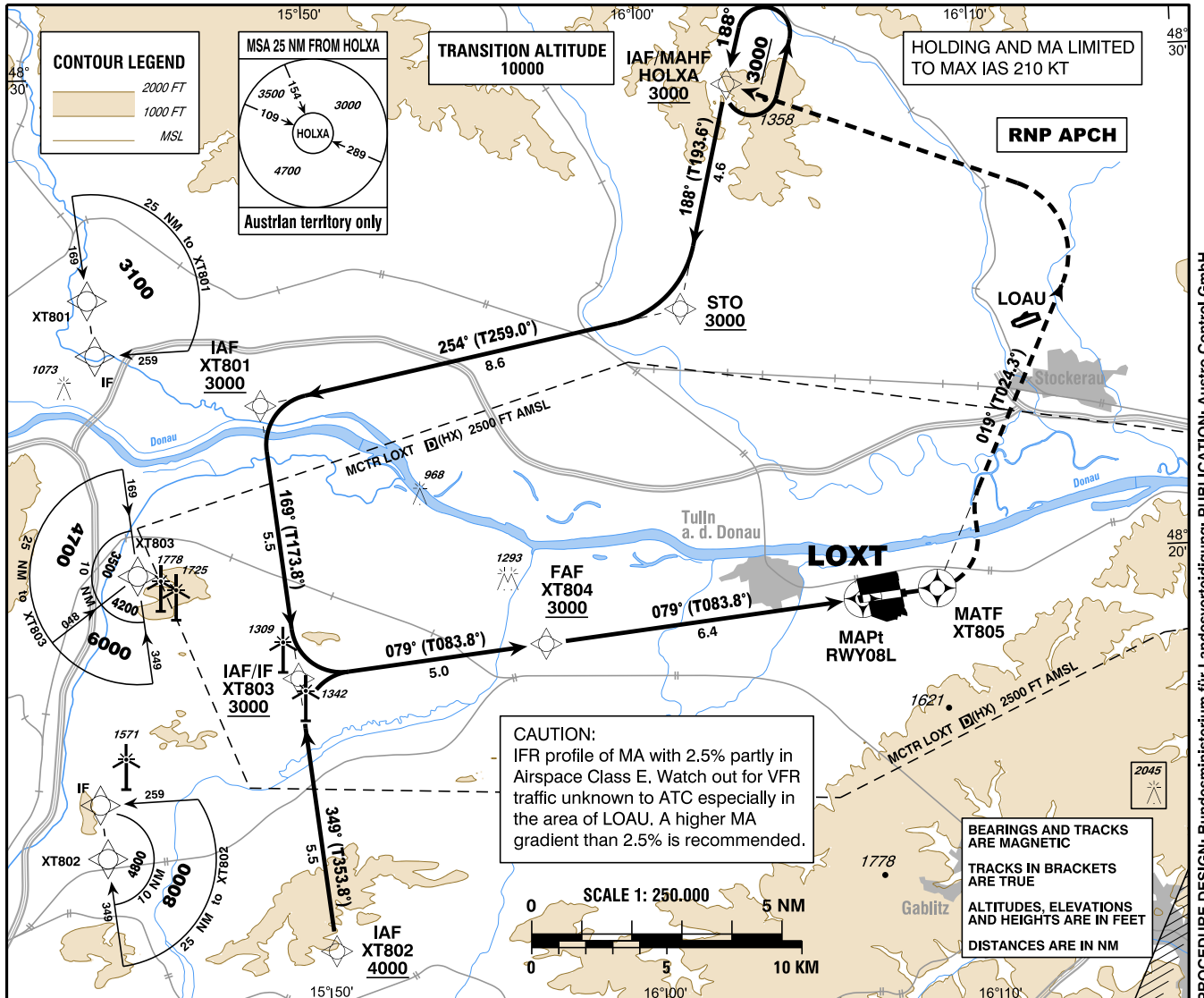
VAR 5° E

AD ELEV 573 FT
THR 08L ELEV 575 FT
HGT RELATED TO AD ELEV

TULLN RADAR 136.130
TULLN TOWER 129.880
118.905
136.630

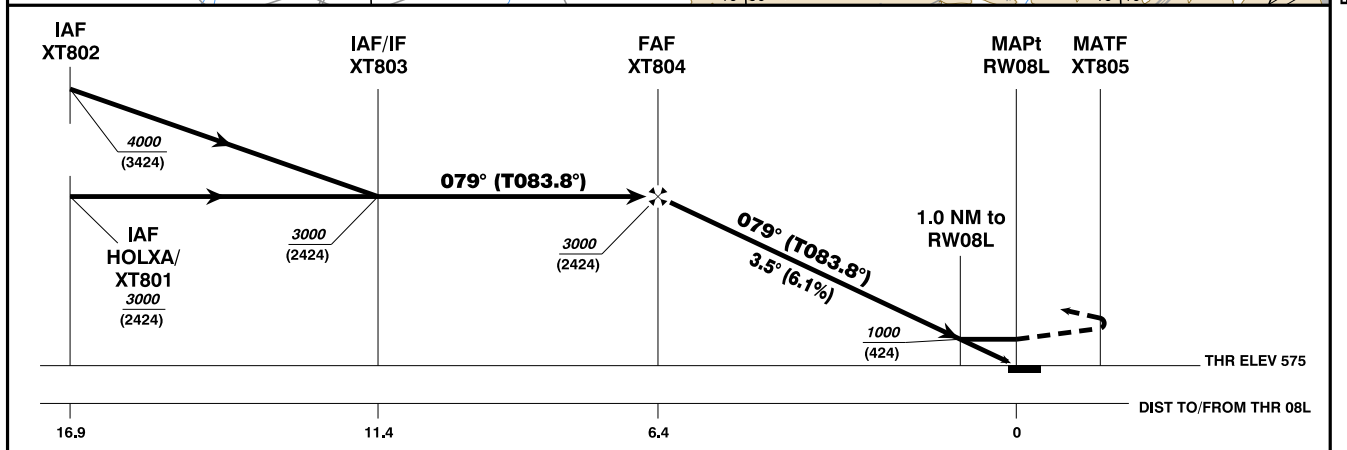
EGNOS
CH 84695
E08A

TULLN (LOXT)
ÖSTERREICH AUSTRIA
RNP RWY 08L



CHANGE: DESIGNATION RWY NR; EDITORIAL

PROCEDURE DESIGN: Bundesministerium für Landesverteidigung; PUBLICATION: Austro Control GmbH



MISSED APPROACH: CLIMB STRAIGHT AHEAD TO XT805. THEN TURN LEFT ON COURSE 019°. WHEN PASSING 2000 FT AMSL TURN LEFT TO HOLXA; CLIMB TO 3000 FT AMSL AND HOLD.

OCA (OCH) IN FT		A	B	D	XT804 to RW08L - DISTANCE 6.4 NM							
LNAV	MA CLIMB GRADIENT				GS (KT)	80	100	120	140	160	180	
	2.5 %	1130 (560)	1170 (600)	1220 (650)	MIN : SEC	4:48	3:50	3:12	2:44	2:24	2:08	
LPV	2.5 %	930 (360)	930 (360)	930 (360)	Rate of descent (6.1%)	FT / MIN	490	615	740	860	985	1110
	5.0 %	865 (290)	874 (299)	894 (319)	DIST In NM to RW08L		4	3	2			
CIRCLING		see LOXT AD 2 MAP 14-1				ALT (HEIGHT)		2112 (1537)	1742 (1167)	1372 (797)		

**Instrument Approach Procedure Coding Table
Tulln RNP RWY 08**

Path Terminator	Waypoint				Course/ Track ° MAG (° True)	DIST NM	Turn Direction	Constraints		Navigation Specification	Remarks
	Identifier	Type	Flyover	Coordinates				Level	Speed		
IF	HOLXA	IAF	no	N482929.04 E0160243.76				A3000+		RNP APCH	
TF	STO		no	N482501.51 E0160107.53	188° (193.6°)	4.6	right	A3000+		RNP APCH	
IF / TF	XT801	IAF	no	N482322.06 E0154825.87	254° (259.0°)	8.6	left	A3000+		RNP APCH	
IF	XT802	IAF	no	N481226.34 E0155012.28				A4000+		RNP APCH	
IF / TF	XT803	IAF / IF	no	N481754.20 E0154919.09	169° (173.8°)	5.5	left	A3000+		RNP APCH	
					349° (353.8°)	5.5	right				
TF	XT804	FAF	no	N481826.25 E0155645.86	079° (083.8°)	5.0		A3000+		RNP APCH	
TF	RW08	MAPt	yes	N481907.10 E0160617.08	079° (083.8°)	6.4				RNP APCH	
TF	XT805	MATF	yes	N481916.57 E0160831.22	079° (083.9°)	1.5	left		K210-	RNP APCH	
FA					019° (024.3°)		left	A2000+	K210-	RNP APCH	
DF	HOLXA	MAHF	yes	N482929.04 E0160243.76			left	A3000+		RNP APCH	
RNAV Holding											
Holding Point	Inbound Track ° True	Inbound Track ° MAG	Turn Direction	MAX IAS	Minimum Holding Altitude FT MSL / FL	Time	DIST NM	Remarks			
HOLXA	193.6°	188°	left	K210-	A3000+	1 MIN					

SBAS FAS Data Block Coding Table Tulln RNP RWY 08	
Input data	
Operation Type	0
SBAS Provider	1 (EGNOS)
Airport Identifier	LOXT
Runway	08
Runway Letter	0 (None)
Approach Performance Designator	0
Route Indicator	
Reference Path Data Selector	0
Reference Path Identifier	E08A
LTP/FTP Latitude	481907.0980N
LTP/FTP Longitude	0160617.0800E
LTP/FTP Ellipsoidal Height (metres)	220.1
FPAP Latitude	481911.9175N
Delta FPAP Latitude (seconds)	4.8195
FPAP Longitude	0160725.0810E
Delta FPAP Longitude (seconds)	68.0010
Threshold Crossing Height	15.0
TCH Units Selector	1 (meters)
Glidepath Angle (degrees)	3.50
Course Width (metres)	105.00
Length Offset (metres)	0
HAL (metres)	40.0
VAL (metres)	35.0
Output data	
Data Block	10 14 18 0F 0C 08 00 00 01 38 30 05 B4 71 BC 14 F0 51 E9 06 99 1C A7 25 00 42 13 02 2C 81 5E 01 64 00 C8 AF D7 7D CA 38
Calculated CRC Value	D77DCA38
Required Additional Data	
ICAO Code	LO
LTP/FTP Orthometric Height (metres)	175.4