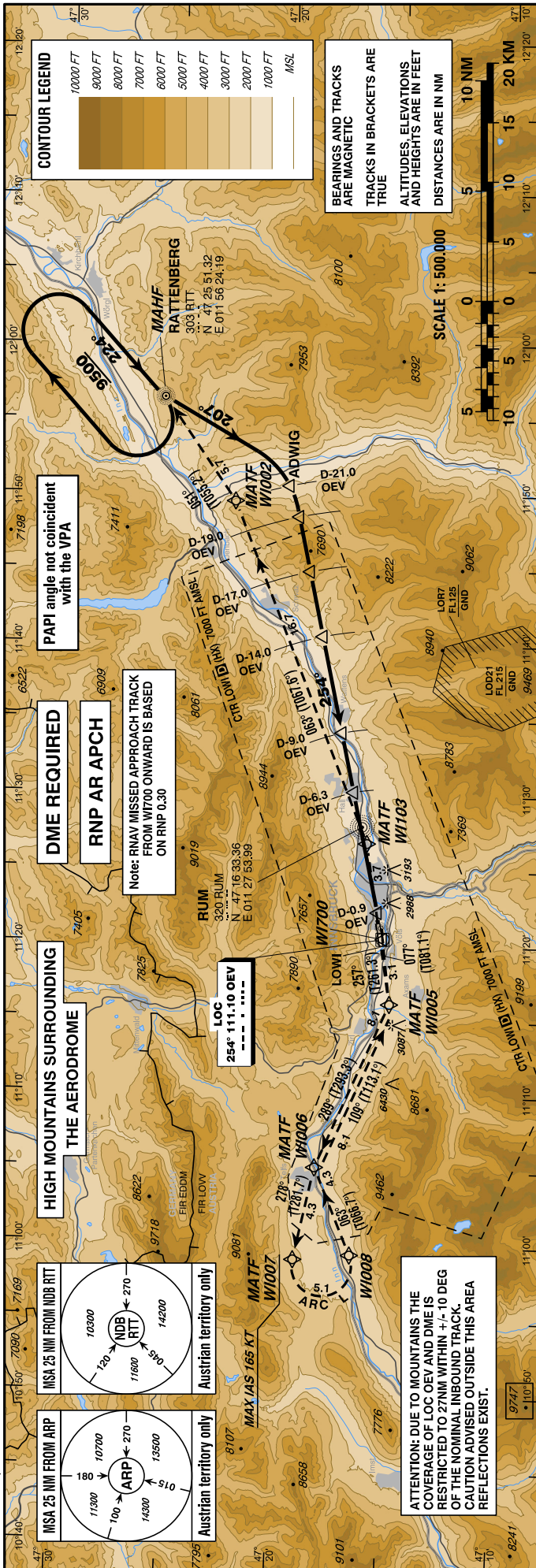


**INSTRUMENT APPROACH CHART - ICAO**

VAR 4° E

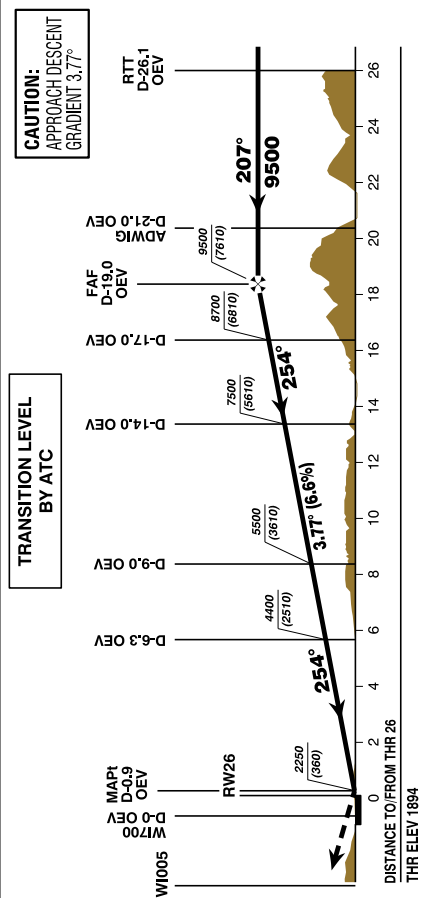
AD ELEV 1907 FT  
THR 26 ELEV 1894 FT  
HGT RELATED TO THR ELEV

**RADAR** 128.975  
**TOWER** 120.100  
**ATIS** 126.030



**WAYPOINT LIST (WGS84):**

RTT	N472551.32	E0115624.19
W1002	N472236.01	E0114930.01
W1005	N471508.72	E0111606.82
W1006	N471820.40	E0110509.80
W1007	N471912.18	E0105859.94
W1008	N471638.56	E0105921.62
W1009	N471753.02	E0105834.83
(= ARC center point)		
W1103	N471616.49	E0112647.56
W1700	N471530.91	E0112026.63
RW26	N471541.83	E0112125.26
ARP	N471537.00	E0112038.00



**SPECIAL AUTHORIZATION REQUIRED**

This procedure requires authorization by Austro Control GmbH, for detailed information see LOWI AD 2.22.

MA CLIMB GRADIENT until passing 3200 FT, thereafter 2.5%	A			B			C		
	MA	B	C	MA	B	C	MA	B	C
5.0%	2250 (360)	D-0.9 OE		2250 (360)	D-0.9 OE		2250 (360)	D-0.9 OE	
4.0%	2450 (560)	D-0.9 OE		2450 (560)	D-0.9 OE		2450 (560)	D-0.9 OE	
2.5%	2750 (860)	D-0.9 OE		2750 (860)	D-0.9 OE		2750 (860)	D-0.9 OE	

AERA OF VISUAL MANOEUVRING SEE LOWI AD 2 MAP 14-1																	
D-19.0 OE to D-0.9 OE - DISTANCE 18.1 NM																	
GS (KT)	80	100	120	140	160	180											
MIN : SEC	13:35	10:52	9:03	7:45	6:47	6:02											
DME OE	18	17	16	15	14	13	12	11	10	9	8	7	6	5	4	3	2
DIST THR	17.8	16.8	15.8	14.8	13.8	12.8	11.8	10.8	9.8	8.8	7.8	6.8	5.8	4.8	3.8	2.8	1.8
ALT (HEIGHT)	9100 (7206)	8700 (6806)	8300 (6406)	7900 (6006)	7500 (5606)	7100 (5206)	6700 (4806)	6300 (4406)	5900 (4006)	5500 (3606)	5100 (3206)	4700 (2806)	4300 (2406)	3900 (2006)	3500 (1606)	3100 (1206)	2700 (806)

CHANGE: MSA; EDITORIAL