

TRANSITION LEVEL BY ATC

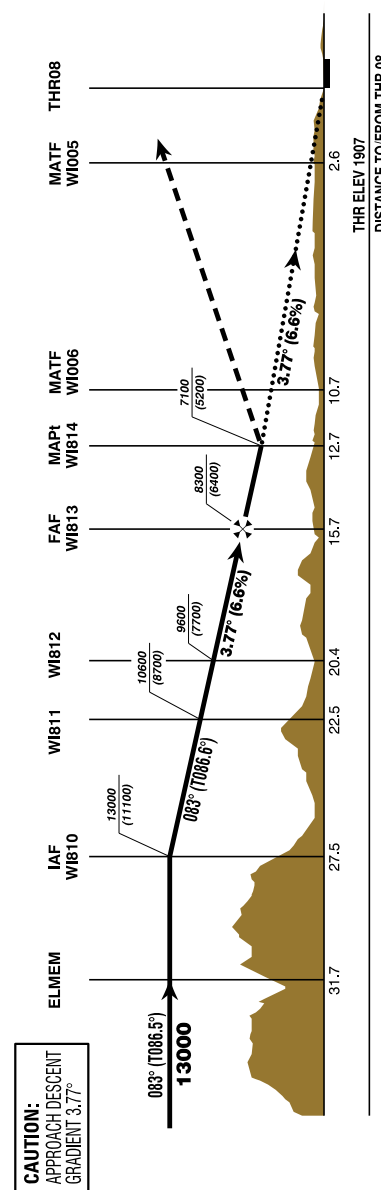
PAPI angle not coincident with the VPA

BEARINGS AND TRACKS ARE MAGNETIC

TRACKS IN BRACKETS ARE TRUE

ALTITUDES, ELEVATIONS AND HEIGHTS ARE IN FEET

DISTANCES ARE IN NM



MISSED APPROACH:
CLIMB VIA RNAV MISSED APPROACH TRACK TO RTT;
CLIMB TO 9500 FT AMSL AND HOLD.

W1813 to W1814 - DISTANCE 3.0 NM
(Timing not authorized for defining the MAFI)

Rate of descent (6.6%)	FT / MIN	530	670	800	930	1070	1200
GS (KT)	80	100	120	140	160	180	

DIST in NM to W1814	2.3	1.3	0.3
DIST in NM to THR	15	14	13
ALT (HEIGHT)	8000 (6093)	7600 (5693)	7200 (5293)

MDA (MDH) IN FT	A	B	C	D
LNAV	7100 (5200)			

For detailed information see LOWI AD 2.22.

Instrument Approach Procedure Coding Table Innsbruck RNP VISUAL V RWY 08											
Path Terminator	Waypoint				Course/ Track ° MAG (° True)	DIST NM	Turn Direction	Constraints		Navigation Specification	Remarks
	Identifier	Type	Flyover	Coordinates				Level	Speed		
	ELMEM		no	N471708.28 E0103414.66				A13000+			
IF	WI810	IAF	no	N471723.71 E0104036.33	083° (086.6°)	4.3		A13000+		RNP APCH	
TF	WI811		no	N471741.19 E0104753.94	083° (086.6°)	5.0		A10600+		RNP APCH	
TF	WI812		no	N471748.33 E0105056.30	083° (086.7°)	2.1		A9600+		RNP APCH	
TF	WI813	FAF	no	N471804.14 E0105749.49	083° (086.7°)	4.7		A8300+		RNP APCH	
TF	WI814	MAPt	yes	N471813.91 E0110213.67	083° (086.9°)	3.0		A7100+		RNP APCH	
TF	WI006	MATF	no	N471820.40 E0110509.80	083° (086.9°)	2.0				RNP APCH	
TF	WI005	MATF	no	N471508.72 E0111606.82	109° (113.1°)	8.1	right			RNP APCH	
TF	WI103	MATF	no	N471616.49 E0112647.56	077° (081.1°)	7.4	left			RNP APCH	
TF	RTT	MAHF	yes	N472551.32 E0115624.19	060° (064.4°)	22.3	left	A9500+		RNP APCH	
HM	RTT	MAHF	yes	N472551.32 E0115624.19	224° (228.7°)		right	A9500+		RNP APCH	
Visual Approach Segment (after WI814) - Possible Coding											
Path Terminator	Waypoint				Course/ Track ° MAG (° True)	DIST NM	Turn Direction	Constraints		Navigation Specification	Remarks
	Identifier	Type	Flyover	Coordinates				Level	Speed		
TF	WI006		no	N471820.40 E0110509.80	083° (086.9°)	2.0					VPA -3.77°
TF	WI005		no	N471508.72 E0111606.82	109° (113.1°)	8.1	right				VPA -3.77°
TF	RW08		yes	N471531.97 E0111954.11	077° (081.4°)	2.6	left				VPA -3.77°
TF	WI103		no	N471616.49 E0112647.56	077° (081.0°)	4.7					
TF	RTT		yes	N472551.32 E0115624.19	060° (064.4°)	22.3	left				
HM	RTT		yes	N472551.32 E0115624.19	224° (228.7°)		right	A9500+		RNP APCH	
NOTE: Vertical path angle should be coded with -3.77° starting from WI814 until touchdown.											
RNAV Holding											
Holding Point	Inbound Track ° True	Inbound Track ° MAG	Turn Direction	MAX IAS	Minimum Holding Altitude FT MSL / FL	Time	DIST NM	Remarks			
RTT	228.7°	224°	right		A9500	1 MIN					
THR Coordinates											
RWY 08	N471531.97 E0111954.11										