

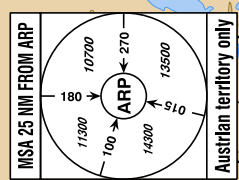
HIGH MOUNTAINS SURROUNDING THE AERODROME

RNP AR DP

**SPECIAL AUTHORIZATION  
REQUIRED**

This procedure requires authorization  
by Austro Control GmbH,  
for detailed information see LOWI AD 2.2.2.

BEARINGS AND TRACKS  
ARE MAGNETIC  
TRACKS IN BRACKETS  
ARE TRUE  
ALTITUDES AND ELEVATIONS  
ARE IN FEET  
DISTANCES ARE IN NM



**CONTOUR LEGEND**

12000 FT
10000 FT
10000 FT
9000 FT
8000 FT
7000 FT
6000 FT
5000 FT
4000 FT
3000 FT
2000 FT
1000 FT
MSL

CHANGE: MSA; EDITORIAL

**SPECIAL AUTHORIZATION REQUIRED** - This SID is permissible for special performance aircraft ONLY and requires authorization by Austro Control GmbH (for detailed information see LOWI AD 2.22, item 3.9.).



Designator	Route	After Take-Off		Remarks
		Climb to ..initially	Expect FREQ	
<b>MOGTI 1 X</b> Mogti one x-ray departure	Climb on track 257° to WI501 - WI502 - WI802 - MOGTI	By ATC	INNSBRUCK RADAR 128.975	Climb gradient at least 8,0% (490 FT/NM) until passing 7100 FT MSL, thereafter 5,6% (345 FT/NM).

Contact INNSBRUCK RADAR when advised by Tower

**RNAV (RNP) SID Coding Table of MOGTI 1 X**

Path Terminator	Waypoint			Course/ Track ° MAG (° True)	DIST NM	Turn Direction	Constraints		RNP Value NM	Remarks
	Identifier	Flyover	Coordinates				Level	Speed		
CF	WI501	no	N471508.72 E0111606.80	257° (261.5°)	2.6		A3190+		0.3	
TF	WI502	no	N471820.40 E0110509.85	289° (293.3°)	8.1	right	A7100+		0.3	
TF	WI802	no	N471746.91 E0105022.55	263° (266.9°)	10.1	left	A10520+		0.3	
TF	MOGTI	no	N472320.33 E0104300.61	314° (318.0°)	7.5	right	A13000+		0.3	

Designator	Route	After Take-Off		Remarks
		Climb to ..initially	Expect FREQ	
<b>RTT 3 X</b> Rattenberg three x-ray departure	Climb on track 257° to WI005 - WI006 - WI007 - WI008 - WI006 - WI005 - WI103 - WI002 - RTT	By ATC	INNSBRUCK RADAR 128.975	Climb gradient at least 7,0% (430 FT/NM) until passing WI005, thereafter 5,0% (305 FT/NM) until passing WI008, thereafter 3,3% (205 FT/NM)

Contact INNSBRUCK RADAR when advised by Tower

**RNAV (RNP) SID Coding Table of RTT 3 X**

Path Terminator	Waypoint			Course/ Track ° MAG (° True)	DIST NM	Turn Direction	Constraints		RNP Value NM	Remarks
	Identifier	Flyover	Coordinates				Level	Speed		
CF	WI005	no	N471508.72 E0111606.82	257° (261.5°)	2.6		A3000+		0.3	
TF	WI006	no	N471820.40 E0110509.80	289° (293.3°)	8.1	right	A5450+		0.3	
TF	WI007	no	N471912.18 E0105859.94	278° (281.7°)	4.3	left	A6750+	K165-	0.3	
RF	WI008	no	N471638.56 E0105921.62		5.1	left		K165-	0.3	ARC Centre: WI009 N471753.02 E0105834.83 ARC Radius: 1.4 NM
TF	WI006	no	N471820.40 E0110509.80	063° (066.7°)	4.3				0.3	
TF	WI005	no	N471508.72 E0111606.82	109° (113.1°)	8.1	right			0.3	
TF	WI103	no	N471616.49 E0112647.56	077° (081.1°)	7.4	left			0.3	
TF	WI002	no	N472236.01 E0114930.01	063° (067.6°)	16.7	left			0.3	
TF	RTT	no	N472551.32 E0115624.19	051° (055.2°)	5.7	left	A11500+		0.3	