

# SALZBURG (LOWS)

ÖSTERREICH AUSTRIA

RNP Z RWY 33 (AR)

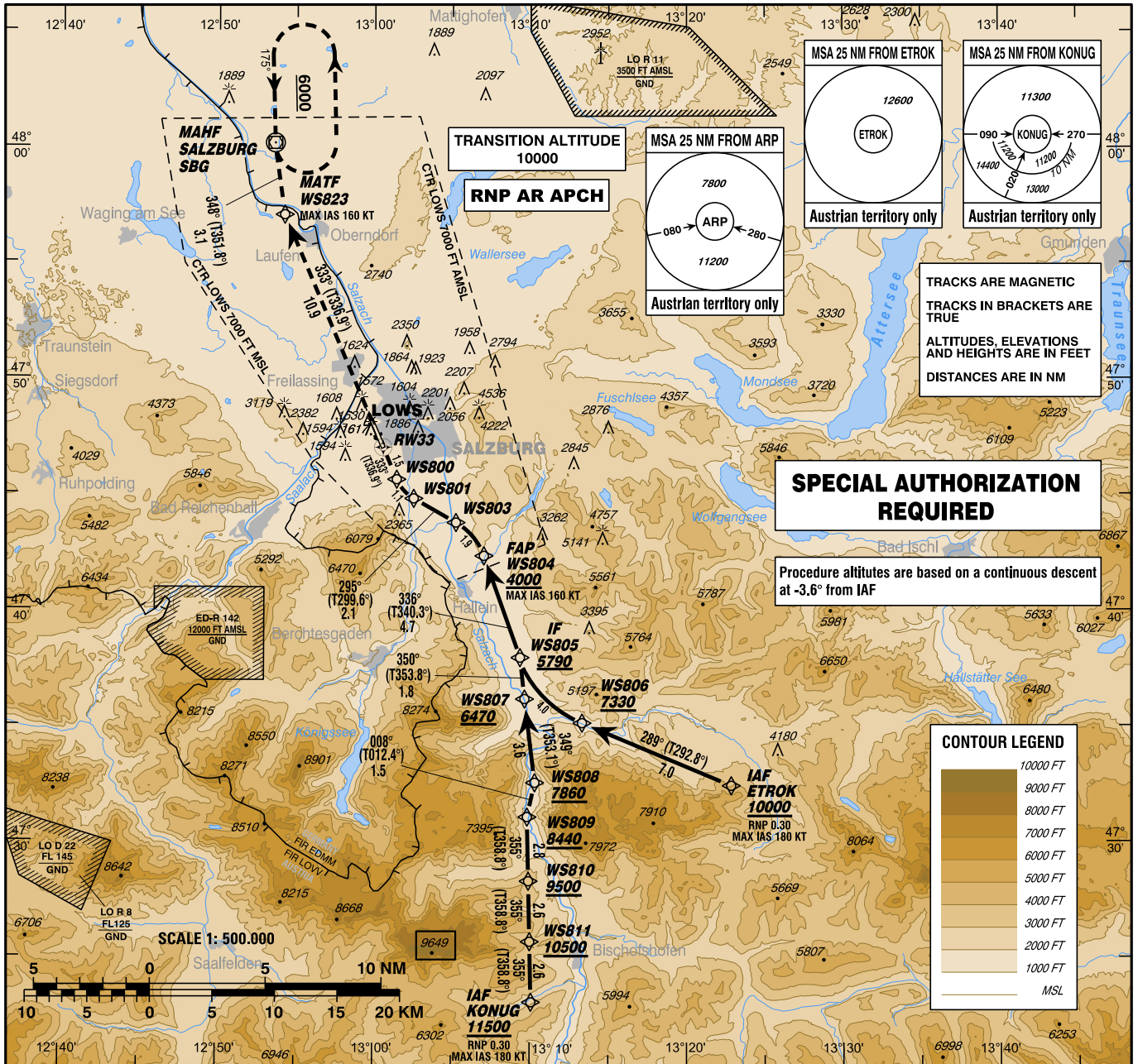
CAT A / B / C

RADAR	123.725
TOWER	132.460
ATIS	118.100
	133.330

INSTRUMENT APPROACH CHART - ICAO

VAR 4° E

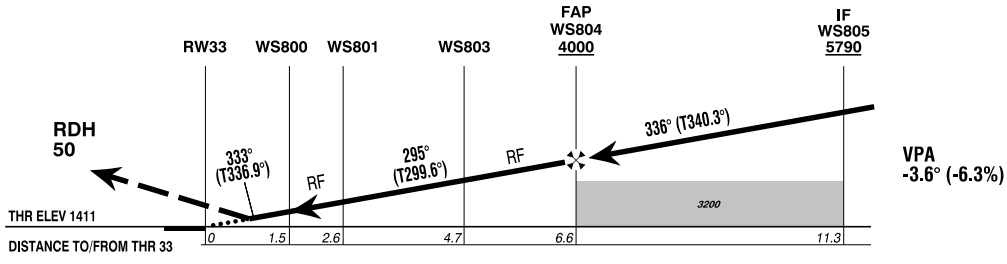
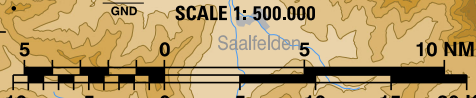
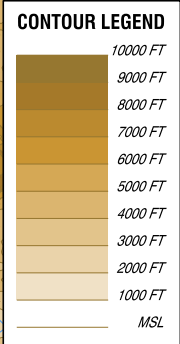
AD ELEV 1411 FT  
THR 33 ELEV 1411 FT  
HGT RELATED TO THR ELEV



CHANGE: WAYPOINTS; MOCA BOX; VERTICAL PROFILE; MSA; MINIMA; MISSED APPROACH INSTRUCTION; EDITORIAL

**SPECIAL AUTHORIZATION REQUIRED**

Procedure altitudes are based on a continuous descent at -3.6° from IAF



**MISSED APPROACH: CLIMB VIA WS823 AND SBG TO 6000 FT AMSL AND HOLD.**

Note: SBG HOLDING MOCA = 3900 FT AMSL

OCA (OCH) IN FT	A	B	C
	RNP 0.30		

GS (KT)	80	100	120	140	160	180
FT / MIN	510	640	760	890	1020	1150

1. Uncompensated Baro-VNAV Systems: procedure not authorized below -15°C
2. VPA exceeds 3.6° above +12°C
3. PAPI angle not coincident with the VPA

The procedure requires authorization by Austro Control GmbH, for detailed information see LOWS AD 2.22.

**Coding Table**  
**LOWS RNP Z RWY 33 (AR) - via ETROK**

Path Terminator	Waypoint				Course/Track ° MAG (° True)	DIST NM	Turn Direction	ARC Centre Waypoint		ARC Radius NM
	Identifier	Type	Flyover	Coordinates				Identifier	Coordinates	
IF	ETROK	IAF	no	N473227.17 E0132251.17						
TF	WS806		no	N473509.18 E0131319.96	289° (292.8°)	7.0				
RF	WS805	IF	no	N473758.63 E0130922.21		4.0	right	WS822	N473935.62 E0131604.76	4.8
TF	WS804	FAP	no	N474221.95 E0130702.79	336° (340.3°)	4.7				
RF	WS803		no	N474348.11 E0130515.50		1.9	left	WS821	N474127.34 E0130317.04	2.7
TF	WS801		no	N474450.31 E0130233.13	295° (299.6°)	2.1				
RF	WS800		no	N474539.81 E0130127.60		1.1	right	WS820	N474620.29 E0130348.79	1.7
TF	RW33		yes	N474702.57 E0130035.34	333° (336.9°)	1.5				
TF	WS823	MATF	no	N475704.79 E0125413.55	333° (336.9°)	10.9				
TF	SBG	MAHF	yes	N480009.30 E0125333.94	348° (351.8°)	3.1	right			
HM	SBG	MAHF	yes	N480009.30 E0125333.94	175° (178.8°)		left			

Waypoint Identifier	Constraints		RNP Value NM	Navigation Specification	Remarks
	Level FT	Speed KT			
ETROK	A10000+	180-	0.30	RNP AR APCH	
WS806	A7330+		0.30	RNP AR APCH	
WS805	A5790+		0.30	RNP AR APCH	
WS804	A4000+	160-	0.30	RNP AR APCH	
WS803			0.30	RNP AR APCH	VPA (°): -3.6
WS801			0.30	RNP AR APCH	VPA (°): -3.6
WS800			0.30	RNP AR APCH	VPA (°): -3.6
RW33			0.30	RNP AR APCH	VPA (°) / TCH (ft): -3.6 / 50
WS823		160-	1.00	RNP AR APCH	
SBG	A6000+		1.00	RNP AR APCH	

**PBN Holding**

Holding Point	Inbound Track ° True	Inbound Track ° MAG	Turn Direction	Speed KT	Holding Altitude FT AMSL / FL		Time	DIST NM	Remarks
					MNM	MAX			
SBG	178.8°	175°	left	230-	A6000	FL140	1 MIN		
				NIL	FL150	FL660	1.5 MIN		

**Coding Table**  
**LOWS RNP Z RWY 33 (AR) - via KONUG**

Path Terminator	Waypoint				Course/Track ° MAG (° True)	DIST NM	Turn Direction	ARC Centre Waypoint		ARC Radius NM
	Identifier	Type	Flyover	Coordinates				Identifier	Coordinates	
IF	KONUG	IAF	no	N472306.07 E0131004.66						
TF	WS811		no	N472542.82 E0130959.79	355° (358.8°)	2.6				
TF	WS810		no	N472819.58 E0130954.91	355° (358.8°)	2.6				
TF	WS809		no	N473105.81 E0130949.73	355° (358.8°)	2.8				
TF	WS808		no	N473234.56 E0131018.56	008° (012.4°)	1.5	right			
TF	WS807		no	N473611.40 E0130939.49	349° (353.1°)	3.6	left			
TF	WS805	IF	no	N473758.63 E0130922.21	350° (353.8°)	1.8				
TF	WS804	FAP	no	N474221.95 E0130702.79	336° (340.3°)	4.7	left			
RF	WS803		no	N474348.11 E0130515.50		1.9	left	WS821	N474127.34 E0130317.04	2.7
TF	WS801		no	N474450.31 E0130233.13	295° (299.6°)	2.1	right			
RF	WS800		no	N474539.81 E0130127.60		1.1	right	WS820	N474620.29 E0130348.79	1.7
TF	RW33		yes	N474702.57 E0130035.34	333° (336.9°)	1.5				
TF	WS823	MATF	no	N475704.79 E0125413.55	333° (336.9°)	10.9				
TF	SBG	MAHF	yes	N480009.30 E0125333.94	348° (351.8°)	3.1	right			
HM	SBG	MAHF	yes	N480009.30 E0125333.94	175° (178.8°)		left			

Waypoint Identifier	Constraints		RNP Value NM	Navigation Specification	Remarks
	Level FT	Speed KT			
KONUG	A11500+	180-	0.30	RNP AR APCH	
WS811	A10500+		0.30	RNP AR APCH	
WS810	A9500+		0.30	RNP AR APCH	
WS809	A8440+		0.30	RNP AR APCH	
WS808	A7860+		0.30	RNP AR APCH	
WS807	A6470+		0.30	RNP AR APCH	
WS805	A5790+		0.30	RNP AR APCH	
WS804	A4000+	160-	0.30	RNP AR APCH	
WS803			0.30	RNP AR APCH	VPA (°): -3.6
WS801			0.30	RNP AR APCH	VPA (°): -3.6
WS800			0.30	RNP AR APCH	VPA (°): -3.6
RW33			0.30	RNP AR APCH	VPA (°) / TCH (ft): -3.6 / 50
WS823		160-	1.00	RNP AR APCH	
SBG	A6000+		1.00	RNP AR APCH	

**PBN Holding**

Holding Point	Inbound Track ° True	Inbound Track ° MAG	Turn Direction	Speed KT	Holding Altitude FT AMSL / FL		Time	DIST NM	Remarks
					MNM	MAX			
SBG	178.8°	175°	left	230-	A6000	FL140	1 MIN		
				NIL	FL150	FL660	1.5 MIN		